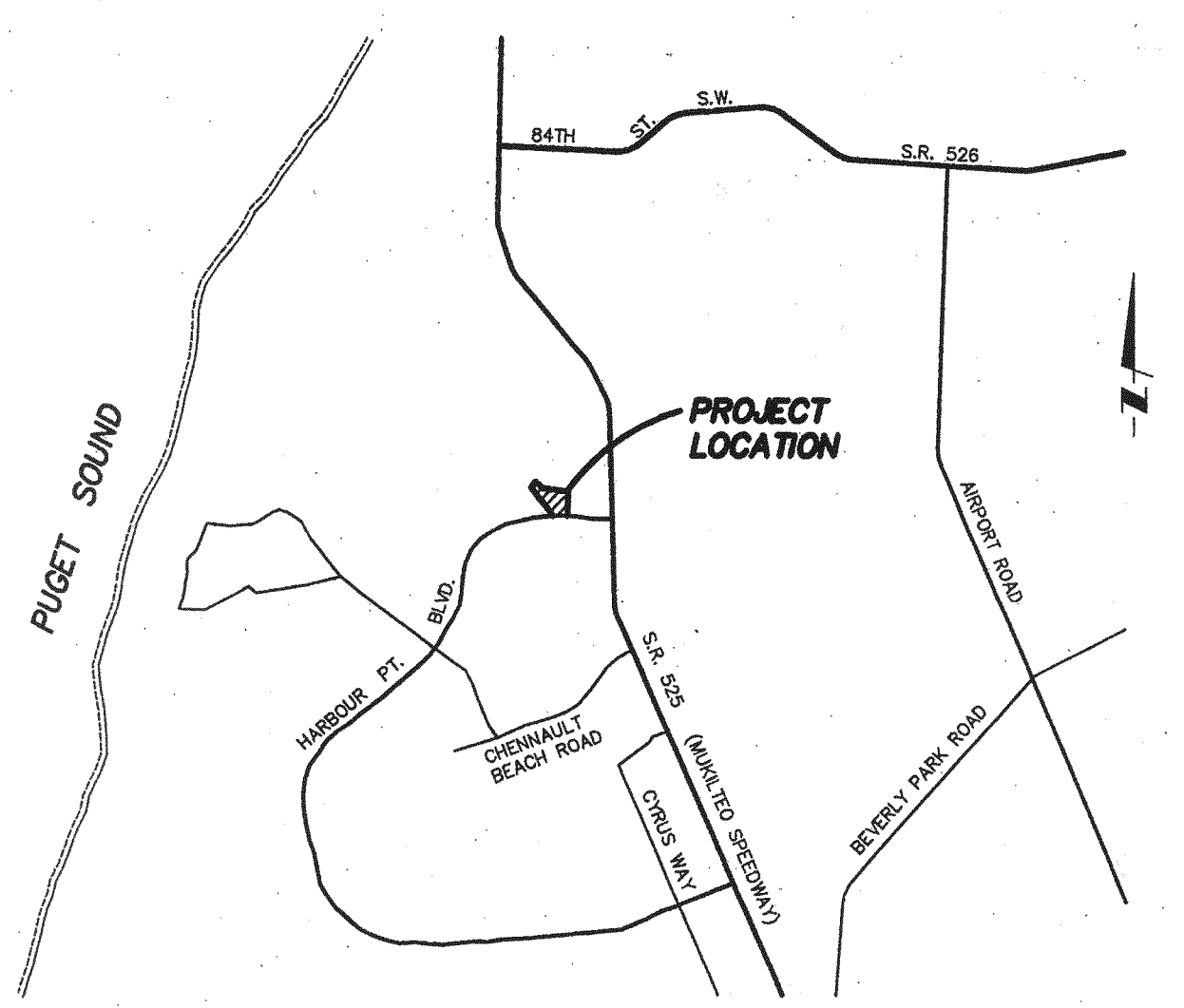
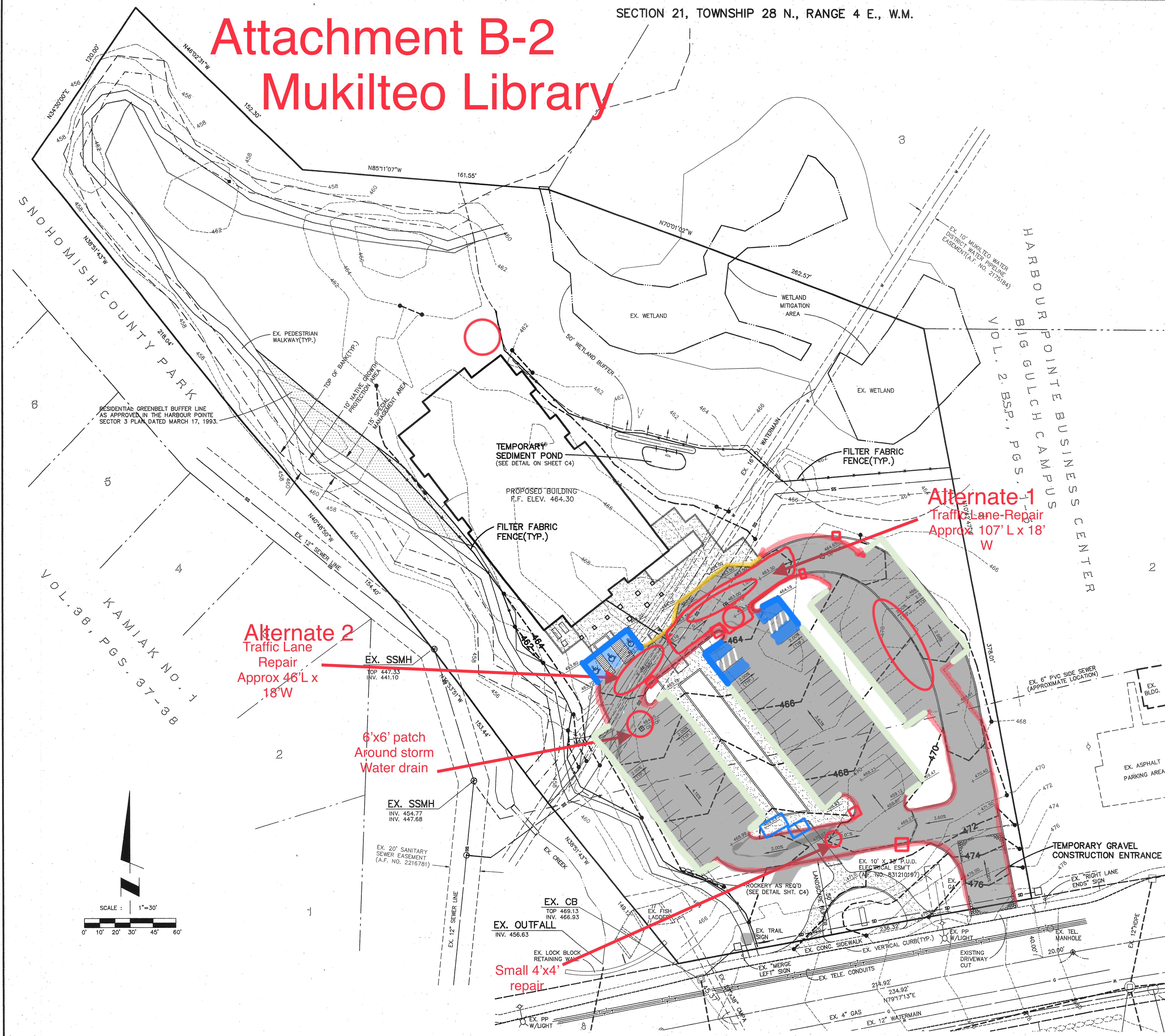


Attachment B-2 Mukilteo Library



VICINITY MAP
SCALE : 1" = 3000'

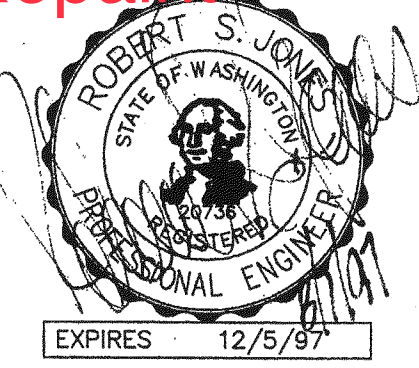
LEGAL DESCRIPTION
LOT 1, HARBOUR POINTE BUSINESS CENTER BIG GULCH CAMPUS, ACCORDING TO THE RECORD OF SURVEY AND BINDING SITE PLAN RECORDED IN VOLUME 2 OF BINDING SITE PLANS, PAGES 1 THROUGH 5, RECORDS OF SNOHOMISH COUNTY, WASHINGTON.

BENCHMARK
WEST RIM OF MONUMENT CASE LOCATED AT THE INTERSECTION OF HARBOUR POINTE BOULEVARD AND 47TH PLACE W.
ELEVATION = 468.97

DATUM
USC & GS

UTILITIES NOTE
LOCATION OF UNDERGROUND UTILITIES SHOWN HEREON IS APPROXIMATE ONLY. THE OWNER SHOULD CONTACT THE UTILITY PURVEYORS IN THE AREA TO ASCERTAIN THE LOCATION AND DEPTH OF ALL UTILITIES AFFECTING THE PROPERTY.

- Curb Repair
- Asphalt Repair
- Sidewalk Repair
- FIRE Curb Repair
- ADA Curb
- ADA Parking



- No Parking Curb
- Seal Coat
- Parking Curb- White

GRADING AND T.E. & S.C. PLAN
FOR
MUKILTEO LIBRARY
IN NE1/4 OF SECTION 21, T.28 N., R.4 E., W.M.
CITY OF MUKILTEO
SNOHOMISH COUNTY, WASHINGTON