

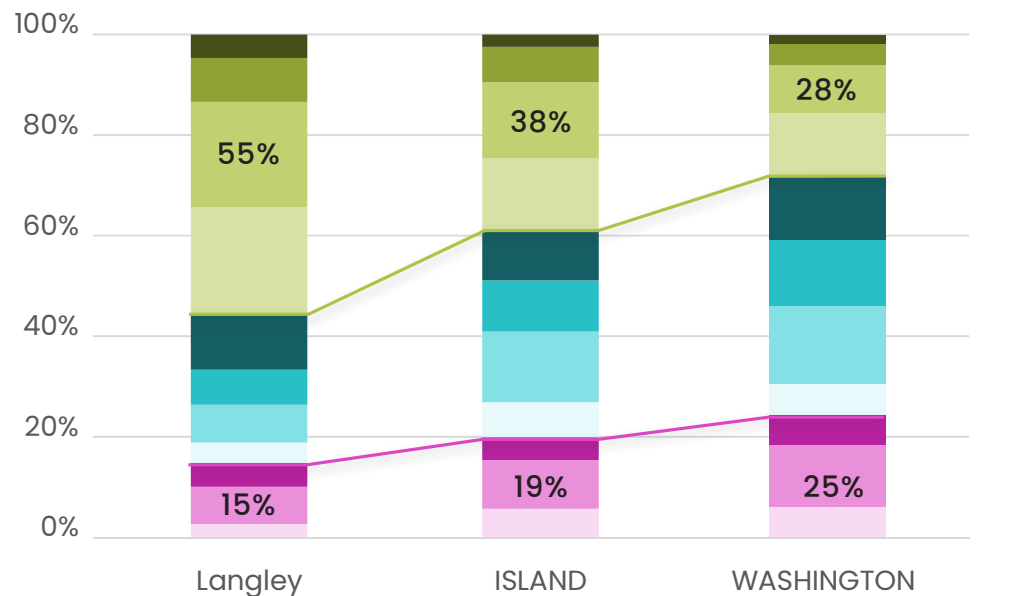
# Sno-Isle Libraries | Langley Library



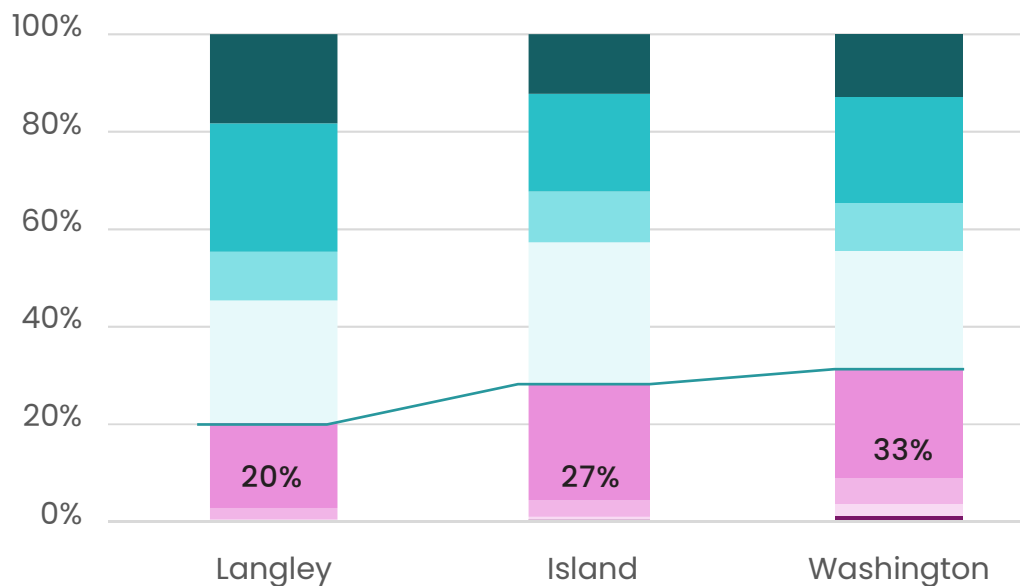
# Population

## Demographic Studies

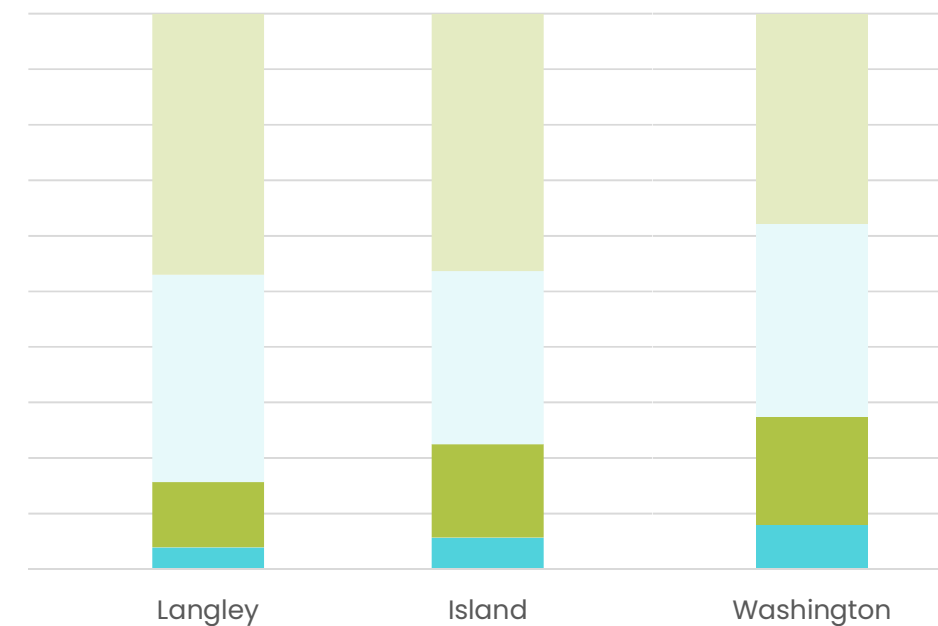
### AGE



### EDUCATION



### HOUSEHOLD COMPOSITION 2020

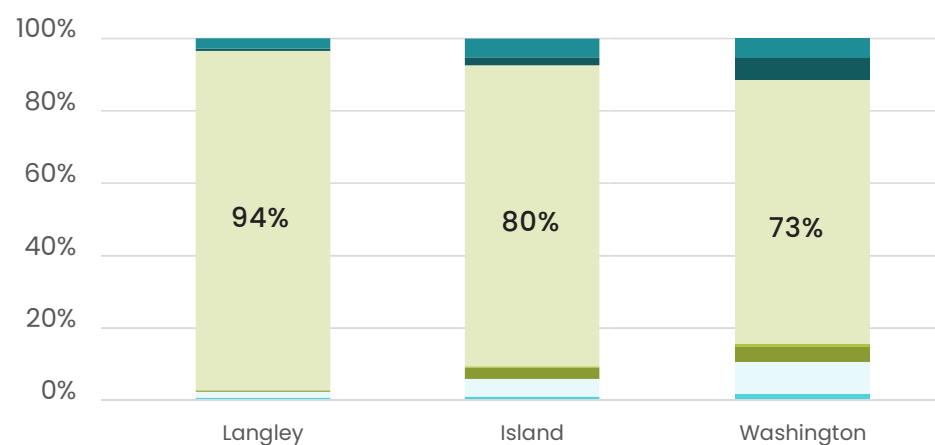


- Age 0 - 4
- Age 5 - 14
- Age 15 - 19
- Age 20 - 24
- Age 25 - 34
- Age 35 - 44
- Age 45 - 54
- Age 55 - 64
- Age 65 - 74
- Age 75 - 84
- Age 85 +

- No school
- Highschool graduate
- Bechelor's degree
- Grade K-8
- Some college w/o degree
- Graduate Degree
- Grade 9-12
- Associate degree

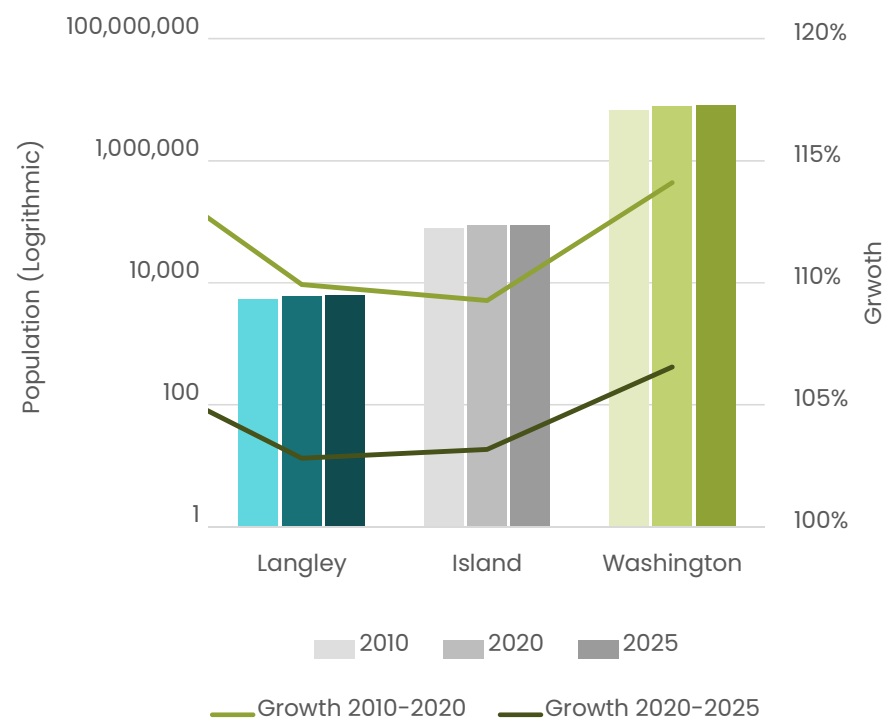
- Single w/children
- Two+ w/children
- Single
- Two+

### RACE + ETHNICITY 2020



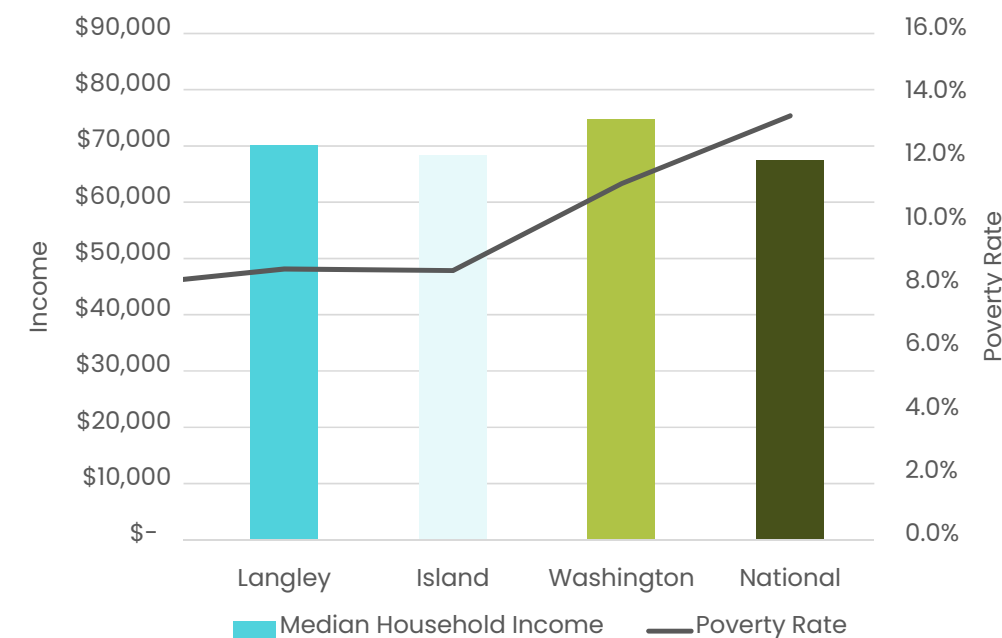
- American Indian, Eskimo, Aleut
- Asian
- Black
- Hawaiian/Pacific Islander
- White
- Multi-Race
- Other

### POPULATION + GROWTH



- 2010
- 2020
- 2025
- Growth 2010-2020
- Growth 2020-2025

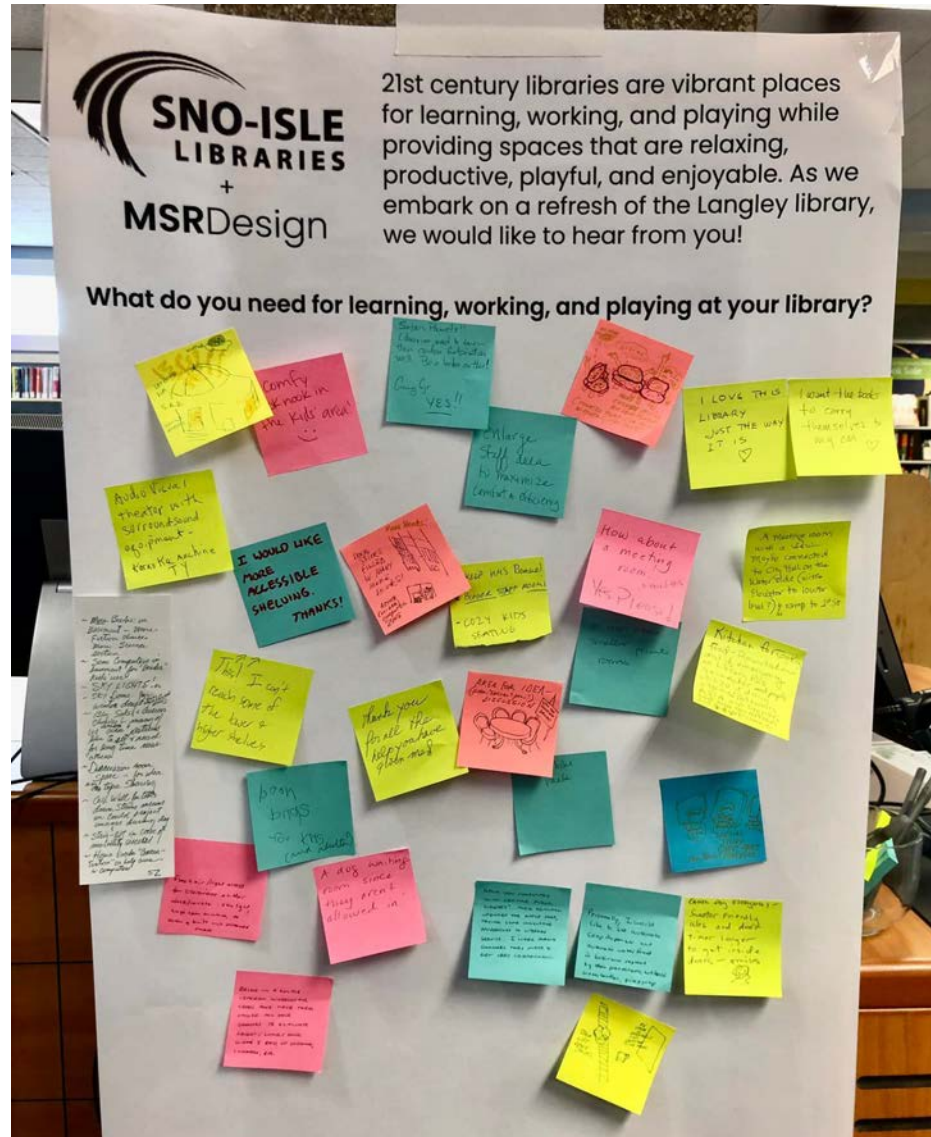
### MEDIAN INCOME + POVERTY RATE



# Community Input

## Public Engagement

- MORE THAN 25 MEETINGS WITH COMMUNITY GROUPS
- COMMUNITY SURVEY WITH 127 RESPONSES
- LIBRARY STAFF COLLECTING IDEAS AND OPINIONS FROM LANGLEY COMMUNITY MEMBERS
- OPINION BOARD IN THE LANGLEY LIBRARY



WHAT DO YOU NEED FOR LEARNING, WORKING, AND PLAYING AT YOUR LIBRARY?

HOW DO YOU USE YOUR LIBRARY?

WHAT DO YOU LOVE ABOUT THE LANGLEY LIBRARY NOW?

WHAT IS MISSING IN THE CURRENT LIBRARY FOR YOUR DAILY LIBRARY USE?

WHAT MAKES LANGLEY A GREAT PLACE IN WHICH TO LIVE AND WORK?

WHAT MAKES THE LANGLEY COMMUNITY UNIQUE THAT WE SHOULD BE SURE TO REFLECT IN OUR DESIGN?

WHAT DO YOU NEED FOR LIFELONG LEARNING AT YOUR LIBRARY?

WHAT DO YOU NEED TO BE MOST PRODUCTIVE WHILE WORKING AT YOUR LIBRARY?

WHAT DO YOU NEED TO RELAX, PLAY, AND SOCIALIZE AT YOUR LIBRARY?

WHAT COULD WE DO TO MAKE THE LIBRARY MORE ACCESSIBLE TO ALL MEMBERS OF OUR COMMUNITY?

# Community Input

Exterior & System Improvements

## SYSTEM

Open to entry to the existing entry  
High efficient Mechanical system

### **Welcoming entry**

### **Covered bicycle parking**

Better ADA access (Ramp, ADA parking)

## STAFF

Keep operable windows  
Lobby area is colder  
Damp basement (no vapor barrier)  
New exterior paint  
Window replacement especially in old building(Children)  
Exterior siding repair  
Roofing related roof design (leakage)

### **ADA access (ADA Ramp)**

Curb height (ADA access from Accessible parking)  
Ramp is not wide enough to staff entry  
New Signage and seating (outdoor space)

### **Dog area away from main entry**

Landscape on west lawn (building safety)

### **Outdoor space and outdoor gathering**

Deck outside of Children's area

## PUBLIC

More parking  
Expanded views to the water  
More windows

### **Welcoming Entry**

Solar panels

### **ADA access (ADA Ramp)**

More accessible bookdrop for people in wheelchairs  
Outdoor holds / pick up window

### **Better bike rack**

**Outdoor reading space with a view**

**Dog area away from main entry**

## DESIGN STANDARDS FOCUS AREAS

- General
- Building Grounds + Outdoor spaces
- Service points + Staff Workspaces
- Public Spaces
- Collection Housing + Display
- Meeting, Study + Hands-on & Labs
- Signage & Wayfinding
- Health + Wellbeing
- Restrooms
- Emergency Services

# Community Input

Interior Needs

## SYSTEM

Early learning  
Meeting room space

## DESIGN STANDARDS FOCUS AREAS

- General
- Building Grounds + Outdoor spaces
- Service points + Staff Workspaces
- Public Spaces
- Collection Housing + Display
- Meeting, Study + Hands-on & Labs
- Signage & Wayfinding
- Health + Wellbeing
- Restrooms
- Emergency Services

## STAFF

### Keeping original character of the building

Inspiring and inclusive  
Spacious and open interior  
Close off fireplace for safety  
**Acoustic in Children's**  
More outlets in Children's  
Flooring replacement (Carpet)  
Window covering needed

Contact free pick up in Staff area  
Privacy within the staff workroom  
Larger staff workroom  
Larger staff breakroom  
Windows in manager's office fitting 3 people, w/ acoustics  
Space for online programming

**Cozy reading area**  
**Better utilization of basement**  
**Display case in lobby**  
Demo Kitchen

66" shelving  
**Lower shelving**

Laptop oriented space  
**Meeting room and breakroom in basement**  
**Study Rooms / Zoom rooms**  
Vibrant learning hub (Meeting room??)

Min 2 public restrooms  
Comfort / Wellness room

## PUBLIC

### Keeping original character of the building

Inspiring and inclusive  
Need more space  
**Enclosed Children's area for acoustics**  
Skylight  
Sustainably sourced materials  
Technology support / computer classes  
Better lighting

Larger staff workroom

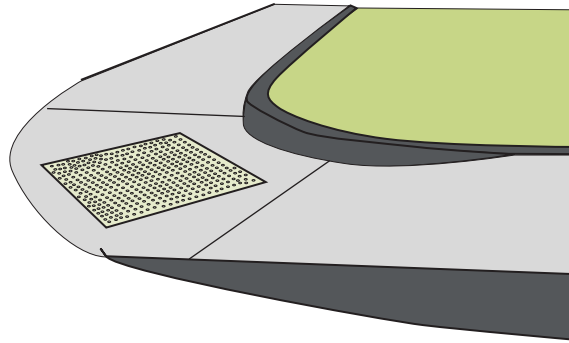
**Quiet / cozy reading area**  
Art - indigenous pieces  
**Comfortable seating with outlets throughout**  
**Business center with copy, scanning and fax machines**  
Coffee area  
Work area for teens  
Reading room  
Privacy seating  
**Study tables**  
Inclusive furniture design  
**More seating**  
3D printers / makerspace  
Demo Kitchen  
**Display space**  
Recording studio

Browsable books + magazine materials  
Keep as many books as possible / more books  
More language offerings / Second language tools  
**Early literacy and interactive children's area**  
**Lower shelving**

**Quiet study space**  
**Meeting space in the basement**  
**Large Meeting room**  
**Study Rooms / Zoom Rooms / Tutoring Rooms**

More restrooms  
Wellness room

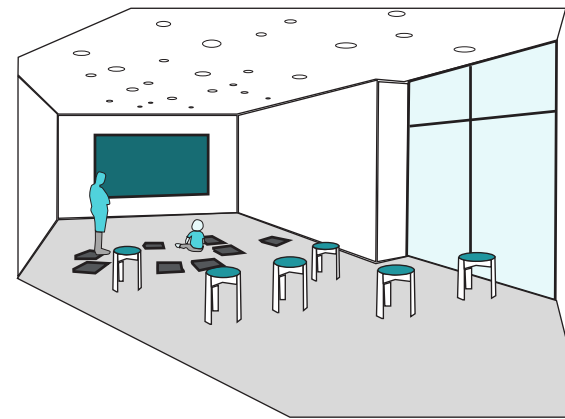
# Common Values



ACCESSIBLE AND WELCOMING ENTRY



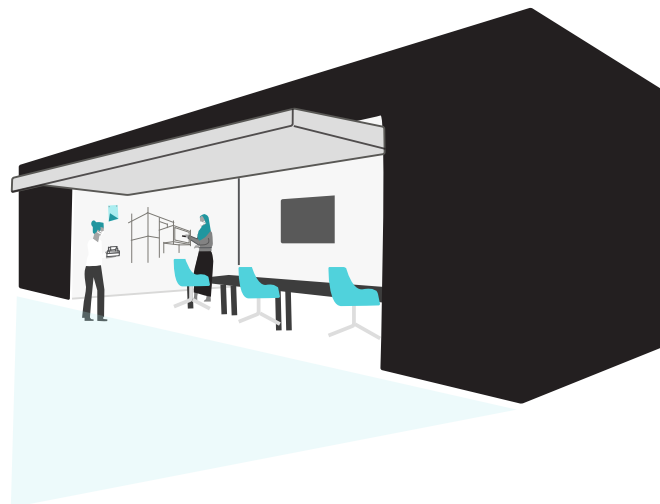
SMALL MEETING ROOM / STUDY ROOM FOR TUTORING, ZOOM, INTERVIEWS, ETC.



ENCLOSED CHILDREN'S SPACE



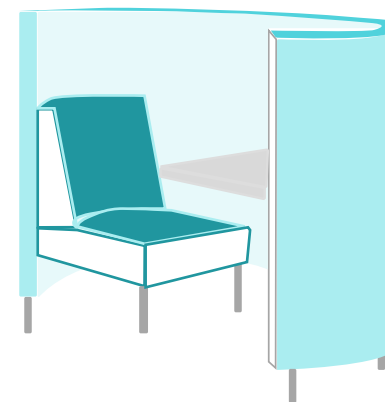
CHILDREN'S HANDS ON LEARNING / EARLY LITERACY



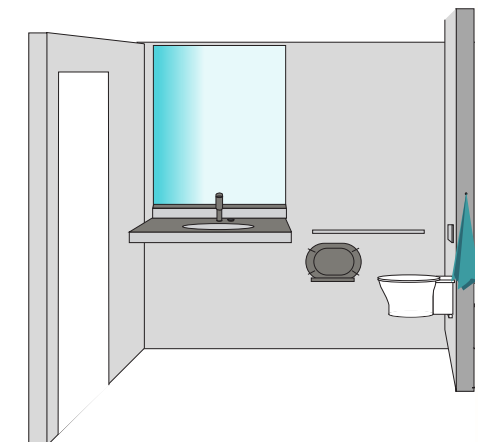
FLEXIBLE MEETING ROOM



OUTDOOR READING SPACE / PROGRAMMING



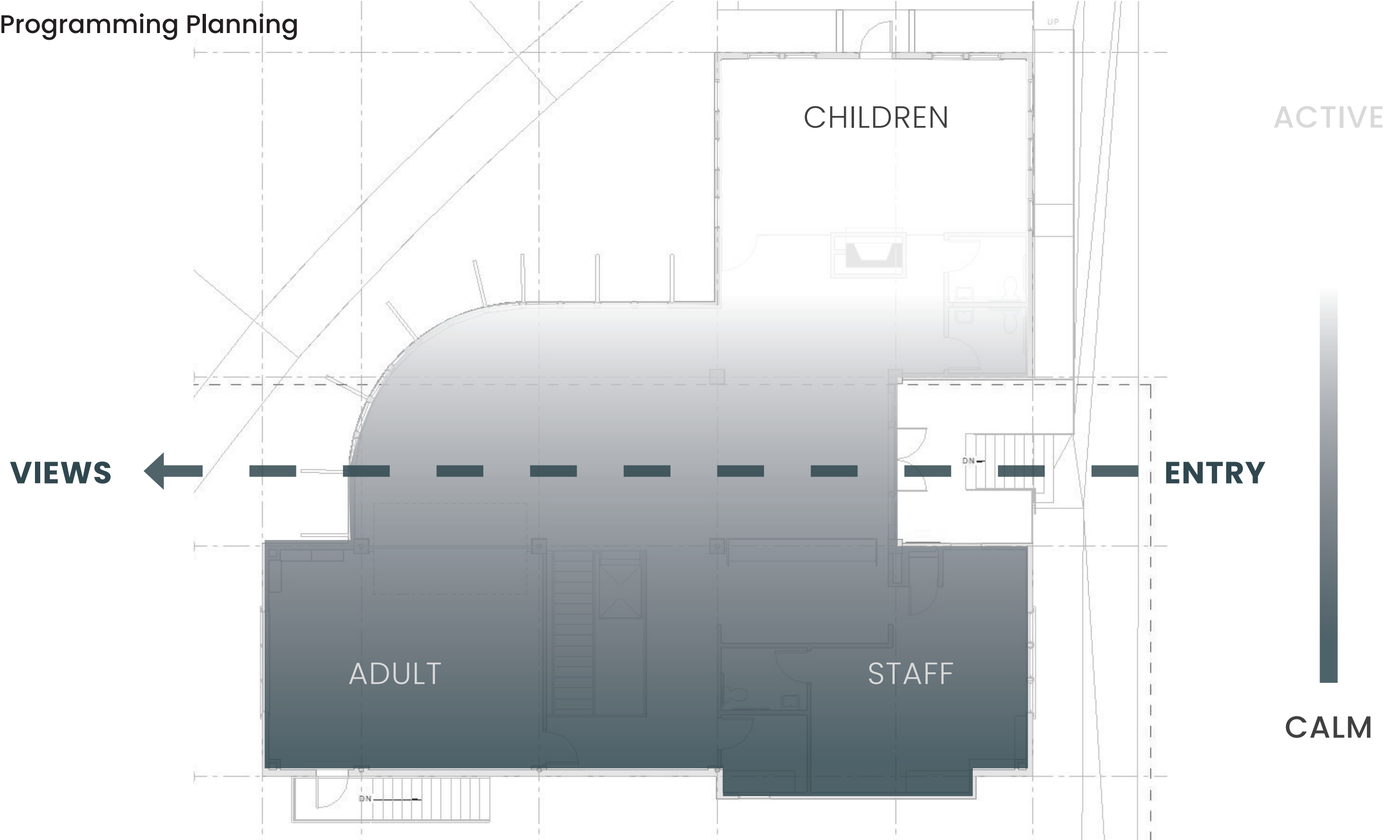
QUIET SEATING AREAS / COMFORTABLE SEATING WITH POWER / MORE SEATING



BARRIER-FREE RESTROOMS

# Design Concept

Programming Planning





# Interior Concept



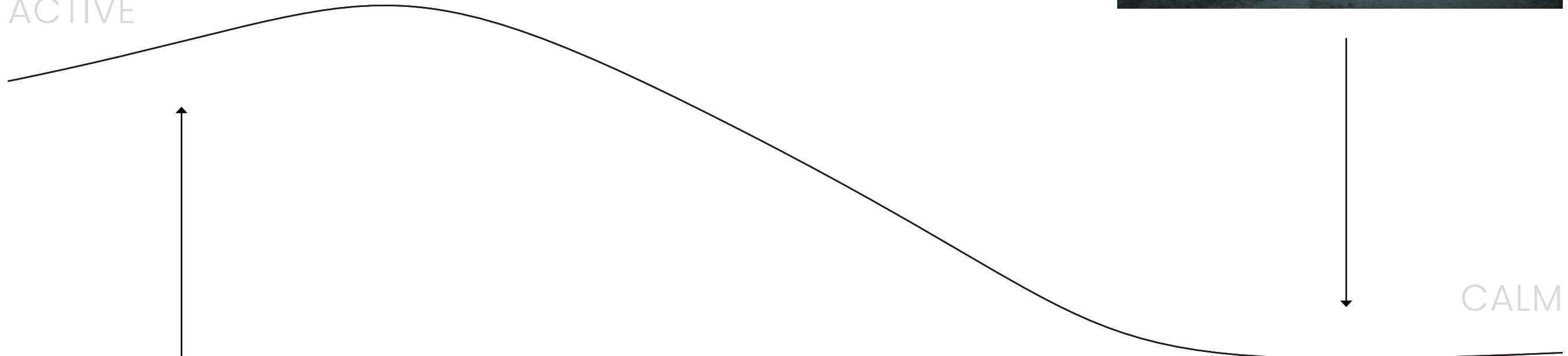
M  
A  
T  
T  
E



G  
L  
O  
S  
S



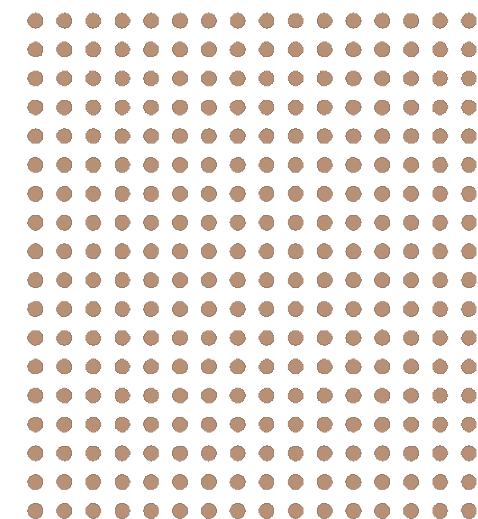
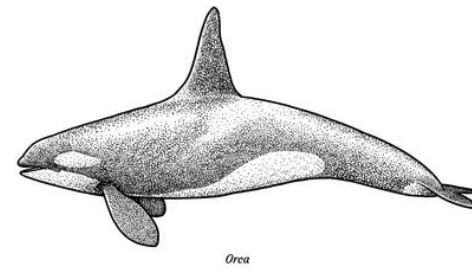
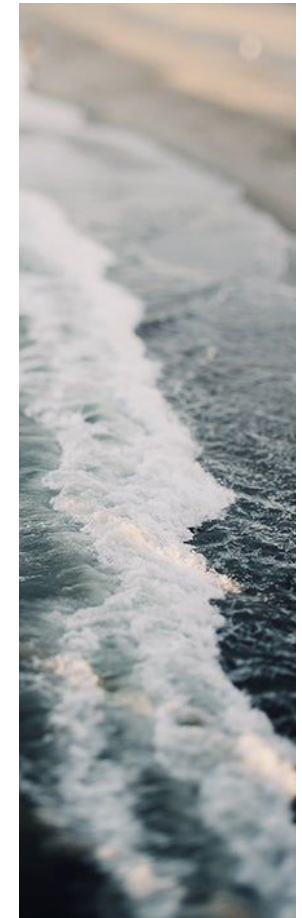
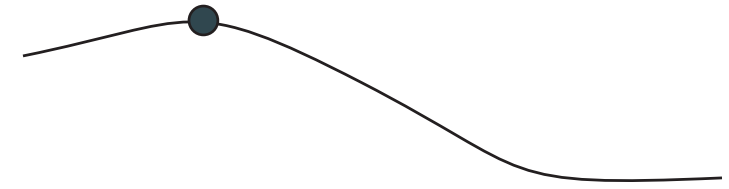
ACTIVE



CALM

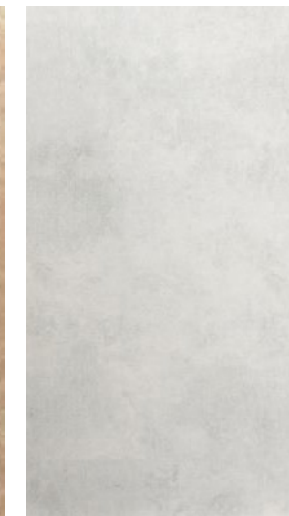
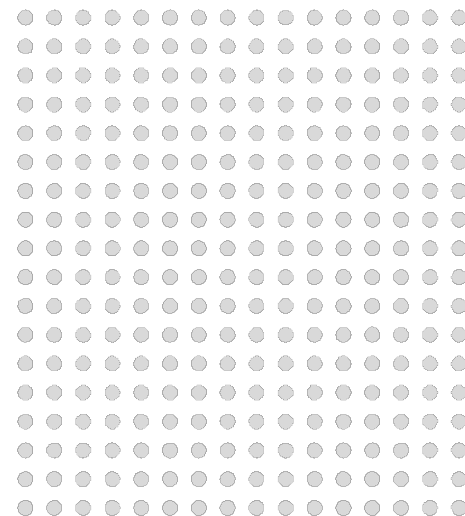
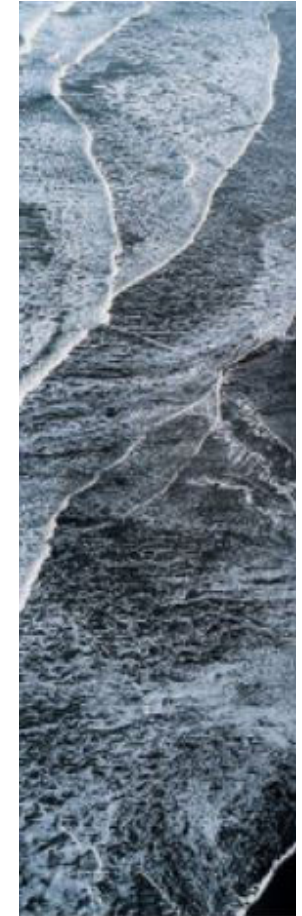
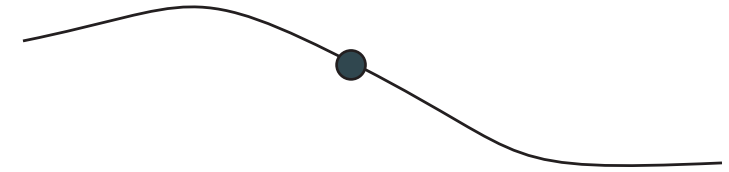
# Interior Concept

Children's Area



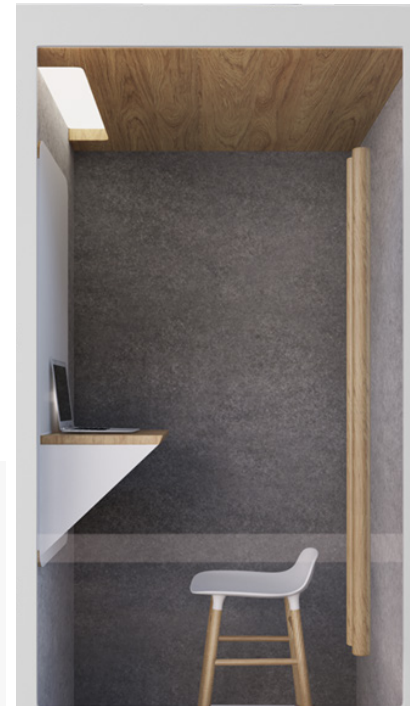
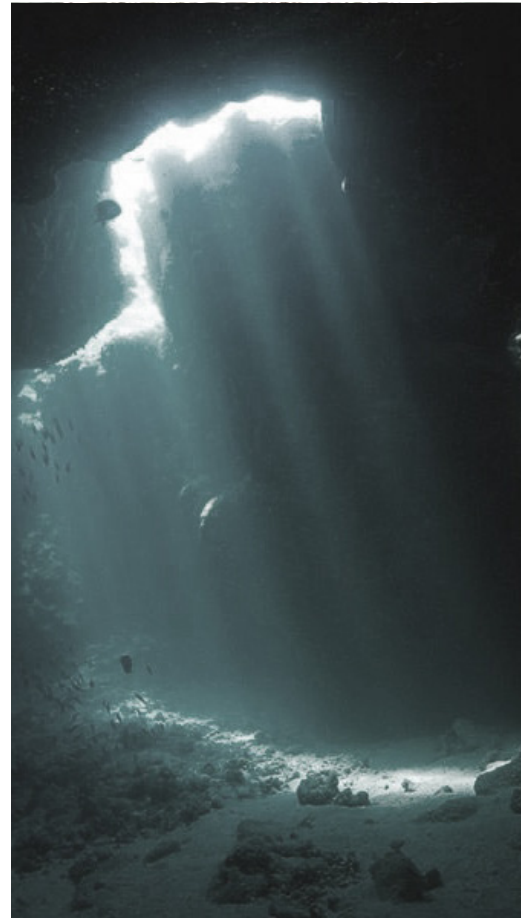
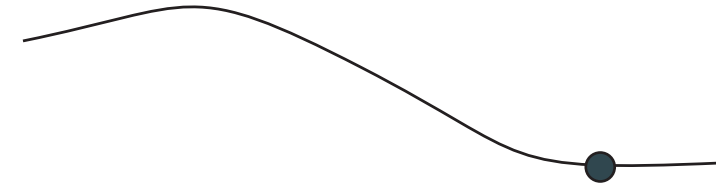
# Interior Concept

Gathering Areas

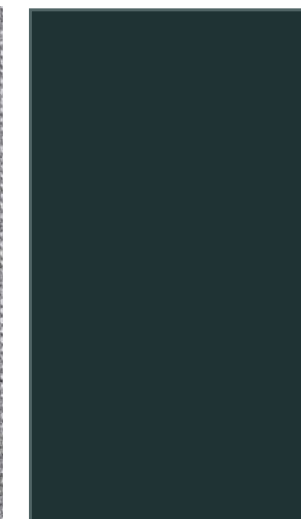
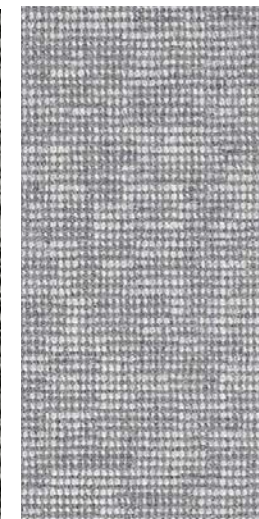
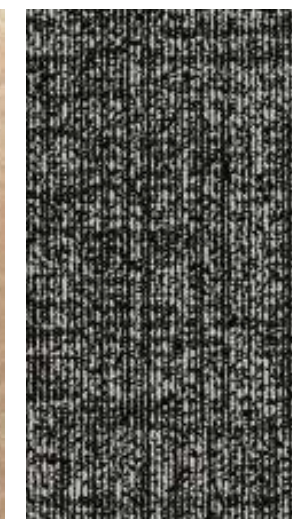
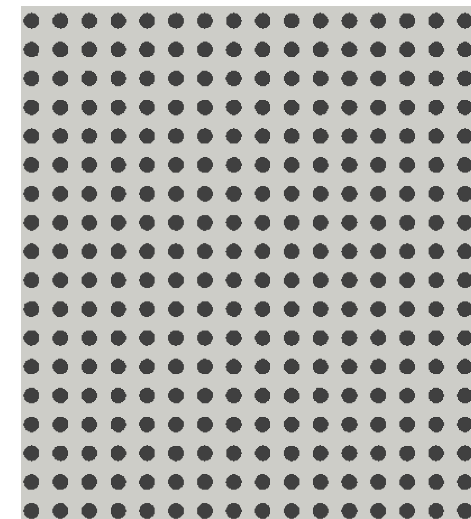
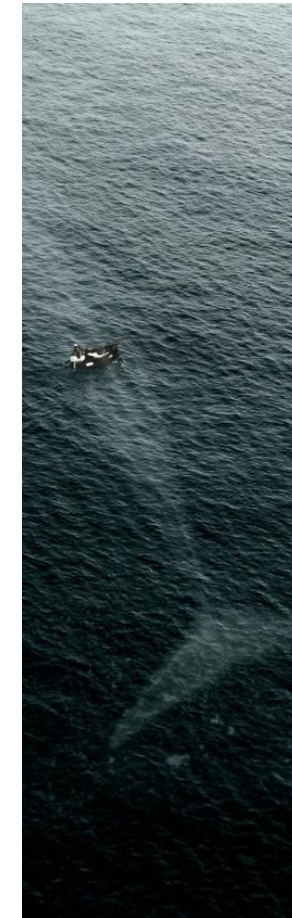


# Interior Concept

Quiet Areas

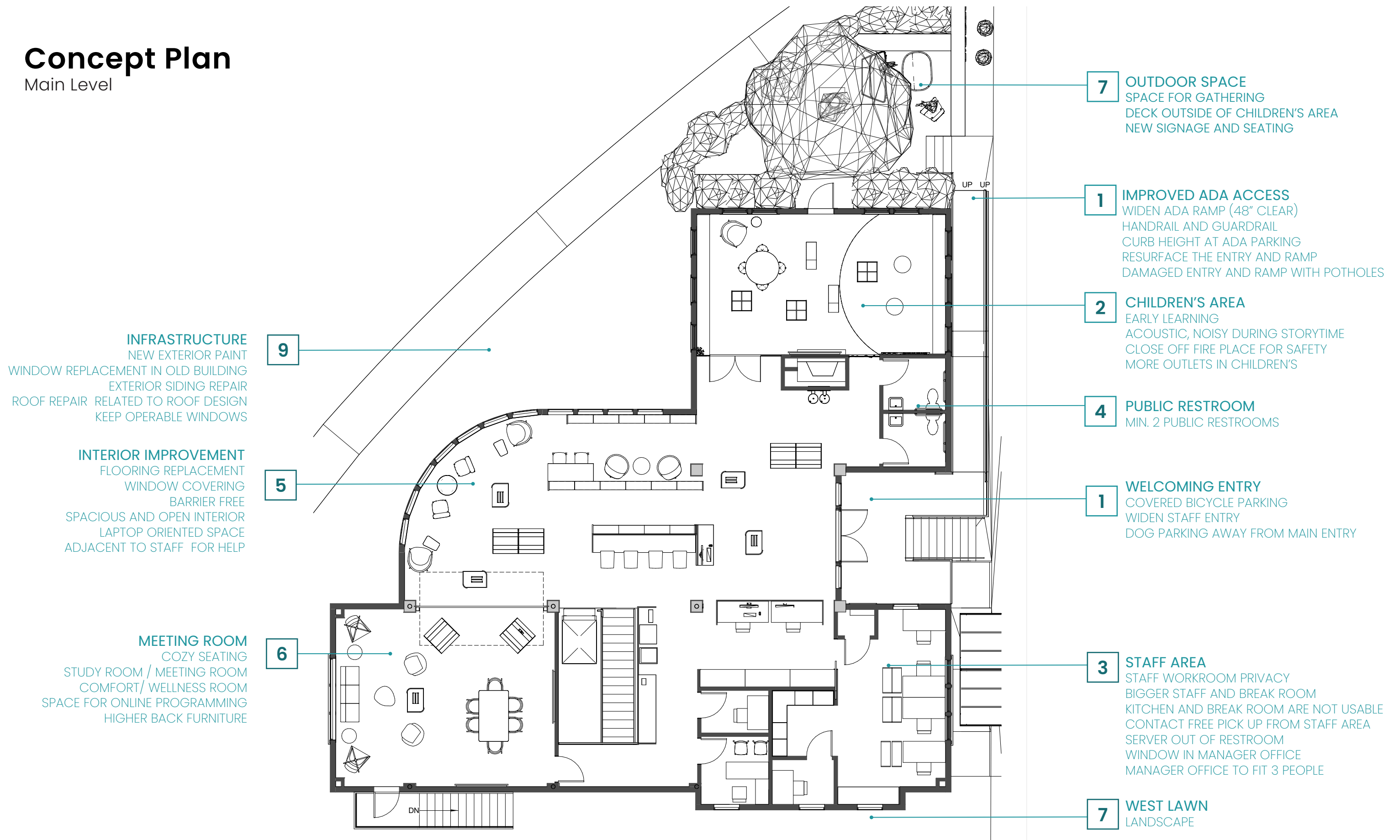


R O  
O M



# Concept Plan

Main Level



## INFRASTRUCTURE

- NEW EXTERIOR PAINT
- WINDOW REPLACEMENT IN OLD BUILDING
- EXTERIOR SIDING REPAIR
- ROOF REPAIR RELATED TO ROOF DESIGN
- KEEP OPERABLE WINDOWS

## INTERIOR IMPROVEMENT

- FLOORING REPLACEMENT
- WINDOW COVERING
- BARRIER FREE
- SPACIOUS AND OPEN INTERIOR
- LAPTOP ORIENTED SPACE
- ADJACENT TO STAFF FOR HELP

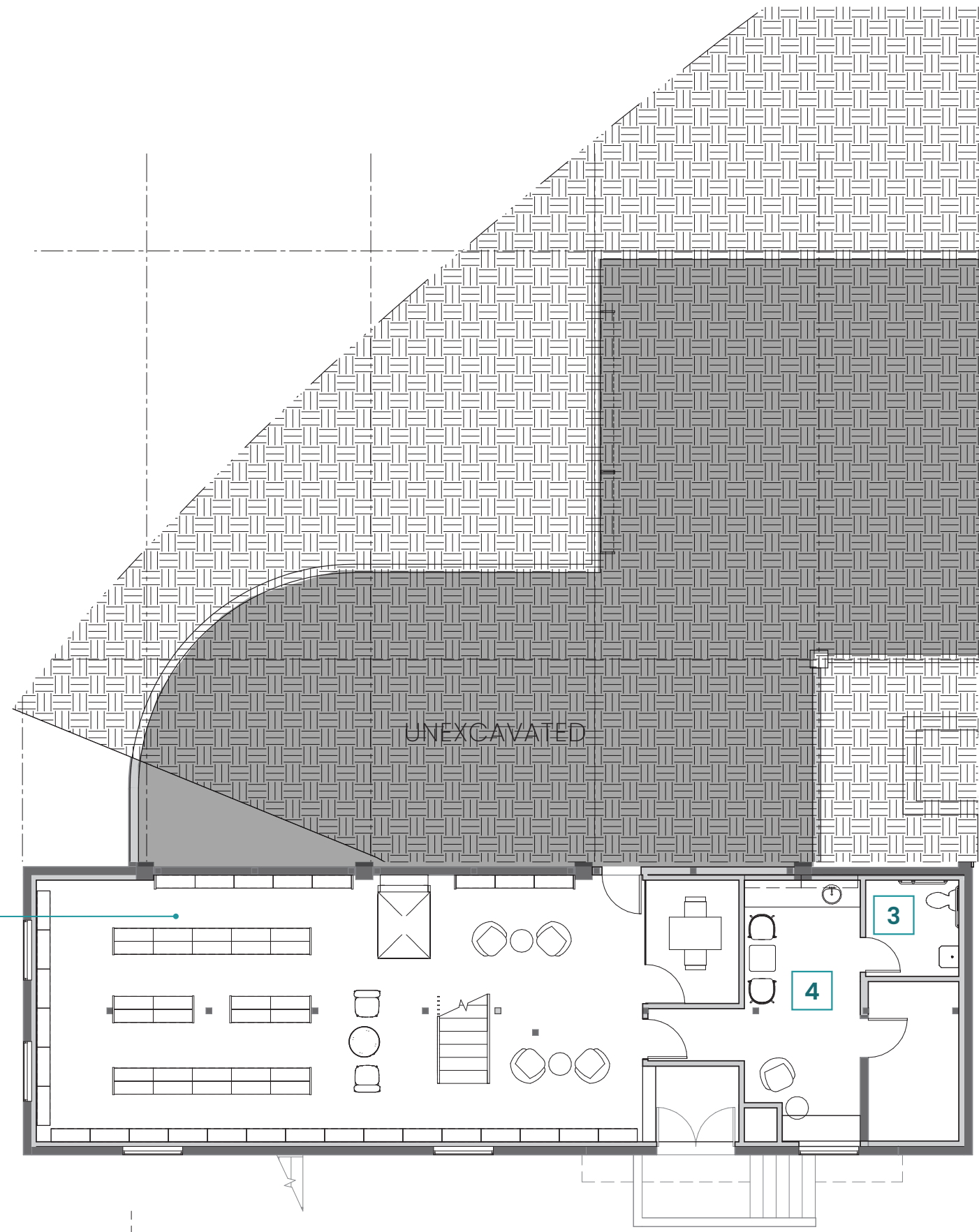
## MEETING ROOM

- COZY SEATING
- STUDY ROOM / MEETING ROOM
- COMFORT/ WELLNESS ROOM
- SPACE FOR ONLINE PROGRAMMING
- HIGHER BACK FURNITURE

- 7 OUTDOOR SPACE**  
SPACE FOR GATHERING  
DECK OUTSIDE OF CHILDREN'S AREA  
NEW SIGNAGE AND SEATING
- 1 IMPROVED ADA ACCESS**  
WIDEN ADA RAMP (48" CLEAR)  
HANDRAIL AND GUARDRAIL  
CURB HEIGHT AT ADA PARKING  
RESURFACE THE ENTRY AND RAMP  
DAMAGED ENTRY AND RAMP WITH POTHOLES
- 2 CHILDREN'S AREA**  
EARLY LEARNING  
ACOUSTIC, NOISY DURING STORYTIME  
CLOSE OFF FIRE PLACE FOR SAFETY  
MORE OUTLETS IN CHILDREN'S
- 4 PUBLIC RESTROOM**  
MIN. 2 PUBLIC RESTROOMS
- 1 WELCOMING ENTRY**  
COVERED BICYCLE PARKING  
WIDEN STAFF ENTRY  
DOG PARKING AWAY FROM MAIN ENTRY
- 3 STAFF AREA**  
STAFF WORKROOM PRIVACY  
BIGGER STAFF AND BREAK ROOM  
KITCHEN AND BREAK ROOM ARE NOT USABLE  
CONTACT FREE PICK UP FROM STAFF AREA  
SERVER OUT OF RESTROOM  
WINDOW IN MANAGER OFFICE  
MANAGER OFFICE TO FIT 3 PEOPLE
- 7 WEST LAWN**  
LANDSCAPE

# Concept Plan

Lower Level



## LOWER LEVEL RENOVATION

- BETTER USE OF BASEMENT
- DAMP BASEMENT
- POSSIBLE MEETING ROOM, BREAK ROOM
- CREATING NEW ENTRY FROM 1ST.
- BROWSING COLLECTION
- REDUCING SHELVING HEIGHT

8

3

4

# Entry



# Entry





## Information Desk



# Children's Entry



## Children's Area



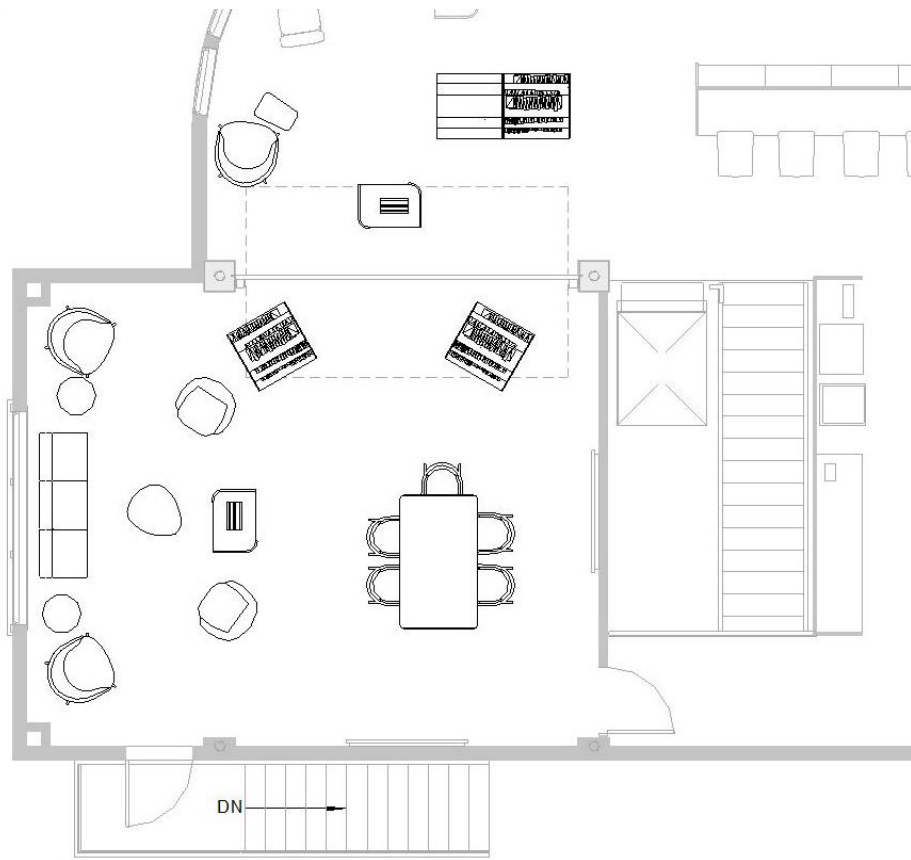
## Business Center



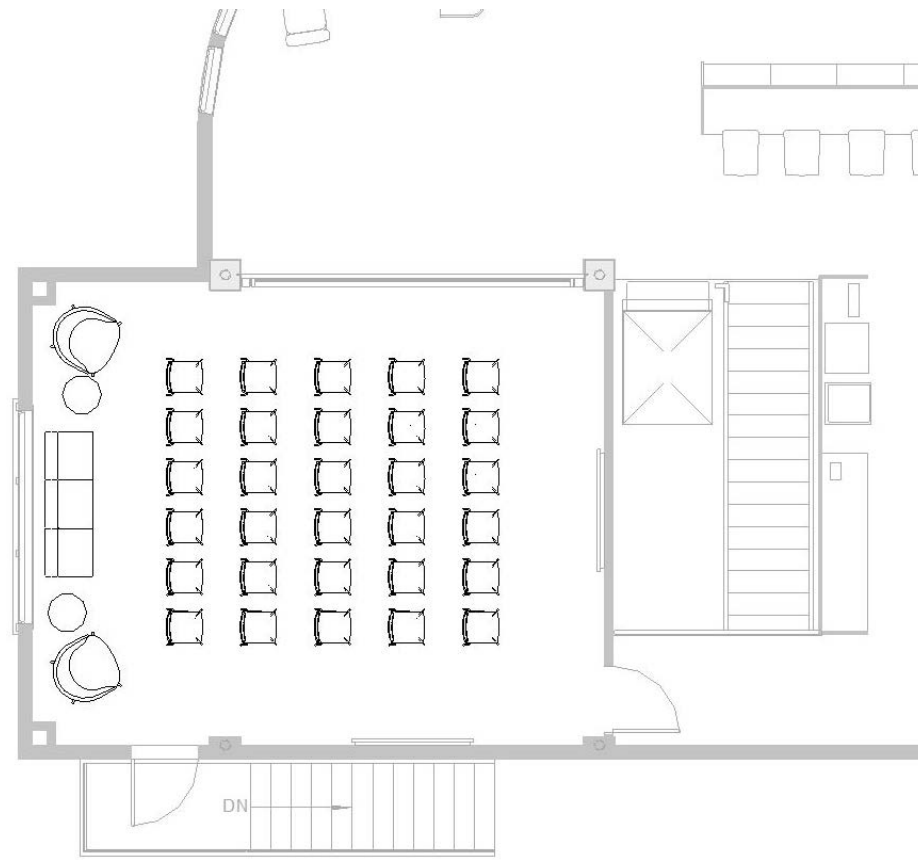
## Lounge Area



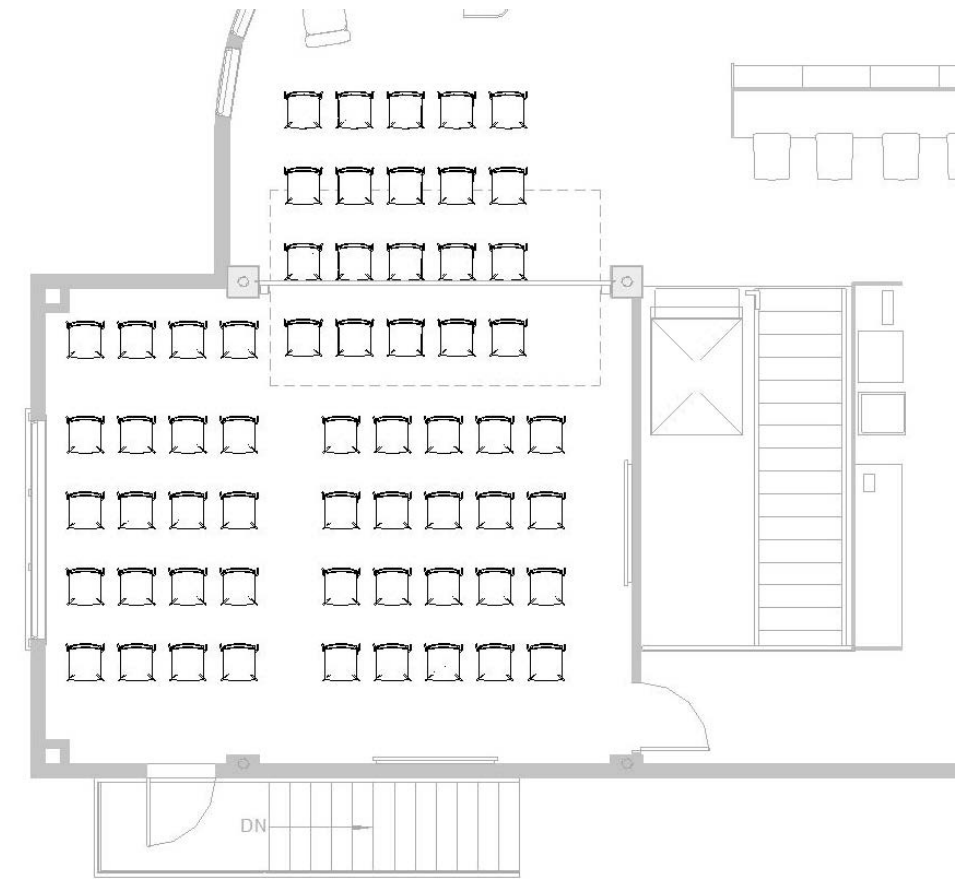
# Meeting Room



typical day - reading room



enclosed meeting



large event

## Large Meeting Room - Typical Day



Large Meeting Room - Enclosed Meeting





## Large Meeting Room – Large Event



## Lower Level



# Lower Level Study Room



# Outdoor Patio Studies

**Patio**  
Option 1



**Patio**  
Option 1



**Patio**  
Option 1



**Patio**  
Option 2





**Patio**  
Option 2



**Patio**  
Option 2



**Patio**  
Option 3



**Patio**  
Option 3



**Patio**  
Option 3



**Patio**  
Option 4



**Patio**  
Option 4



**Patio**  
Option 4





**Patio**  
Option 5



**Patio**  
Option 5



**Patio**  
Option 5

