

SECTION 01 60 10.01
SUBSTITUTION REQUEST FORM

We hereby submit for your consideration the following product instead of the specified item for the following project:

PROJECT TITLE Darrington Library Project PROJECT NO. 20122574

DRAWING NO. _____ DRAWING TITLE _____

SPEC. SECTION SPEC. TITLE PARAGRAPH SPECIFIED ITEM

097200 Wall Coverings Part 2/2.02/C-E Kirei Mura Wallcovering

Proposed Substitution: Soundcore® Covering Surfaces 001

Attach complete information on changes to Drawings and/or Specifications which proposed substitution will require for its proper installation.

Submit, with request, all necessary samples and substantiating data to prove equal quality and performance to that which is specified. Clearly mark manufacturer's literature to indicate equality in performance.

Substitutions of the materials and equipment described in the Contract Documents will be considered during the bidding period upon receipt or a written request to the Architect for approval up to ten (10) days before receipt of bids. Verbal or written requests without the completed Substitution Request Form will not be considered.

CERTIFICATION OF EQUAL PERFORMANCE AND ASSUMPTION OF LIABILITY FOR EQUAL PERFORMANCE

The undersigned states that the function, appearance, and quality are equivalent or superior to the specified item.

Submitted by:

Kristin Haglind - Project Coordinator



Signature

CSI Creative - Manufacturer

Firm

9901 W 74th Street, Eden Prairie, MN 55344

Address

952-224-9944

projects@csicreative.com

12/20/22

Telephone

Email

Date

Signature shall be by person having authority to legally bind his firm to the above terms. Failure to provide legally binding signature will result in retraction of approval.

Fill in Blanks Below:

- A. Does the substitution affect dimensions shown on Drawings? Yes ☒ NO

If yes, clearly indicate changes:

- B. Will the undersigned pay for changes to the building design, including engineering and detailing costs caused by the requested substitution? Yes ☒ NO

If no, fully explain:

n/a

C. What effect does substitution have on other Contracts or other trades?

none

D. What effect does substitution have on construction schedule?

none

E. Manufacturer's warranties of the proposed and specified items are:

x Same _____ Different (Explain on Attachment)

F. Reason for Request:

price savings to owner; typically 15%

G. Itemized comparison of specified item(s) with the proposed substitution.

List significant variations:

H. Accurate cost data comparing proposed substitution with product specified:

I. Designation of maintenance services and sources:

(ATTACH ADDITIONAL SHEETS IF REQUIRED)

FOR USE BY DESIGN PROFESSIONAL:

X Recommended _____ Recommended as Noted
_____ Not Recommended _____ Received Too Late

Signed B: MSR Design

Date: 12/29/2022

FOR USE BY OWNER'S REPRESENTATIVE OR OWNER:

X Approved _____ Approved as Noted _____ Not Approved
_____ Approved Too Late

Signed By: Chy Ross
Chy Ross, Assistant Director of Capital Strategy and Planning

Date: 12/30/2022

END OF SECTION



SURFACES

COVERING SURFACES 001
SUR-COV-001



CSI
Creative

PRODUCT GUIDE



WOOL FELT

100% organic premium design felt.



POWERFUL ACOUSTICS

High Noise Reduction Coefficient.



FIRE-SAFE

ASTM E84: Class A tested and compliant.



VOC FREE

CDPH Standard Method V1.2 School Classroom and Private Office Compliant.



CUSTOM SIZING

Custom-sized products arrive installation ready.



SUSTAINABILITY

100% organic wool is harvested without animal harm.



LOW MAINTENANCE

A light dusting is all you'll ever need.



TACTILE EXPERIENCE

Soft, plush felt delivers unbeatable touch experience.

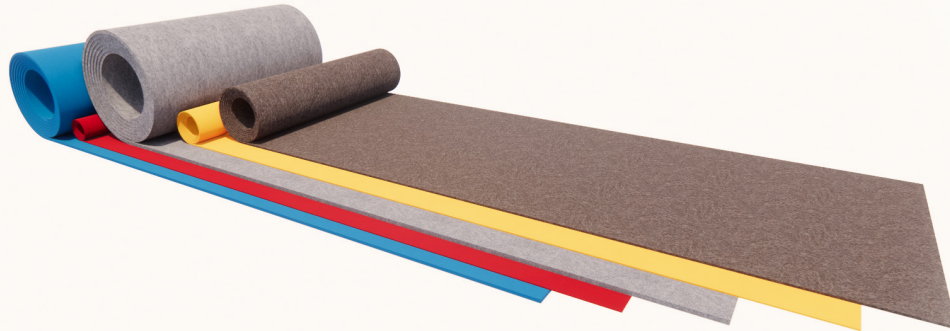


LEAD TIME

2-4 weeks with vast color options.



SPECIFICATIONS



PRODUCT ID	SUR-COV-001
CONTENT	Soundcore® Recycled PET Design Felt
DURABILITY	Impact resistant, shock absorbant
WEATHERING	Non-deteriorating, non-hygroscopic, colorfast
MAINTENANCE	Clean with vacuum or light dusting
WARRANTY	Comes with industry-leading standard warranty
ENVIRONMENTAL	LEEDv4, VOC free, 100% recyclable, non-toxic, non-allergenic, anti-microbial
INSTALLATION	CSI Installation Systems are product specific (see Installation page)
ACOUSTICS	.10 NRC
FLAMMABILITY	ASTM E84: Class A

TECHNICAL

LENGTH

40 Yards

custom lengths available

WIDTH

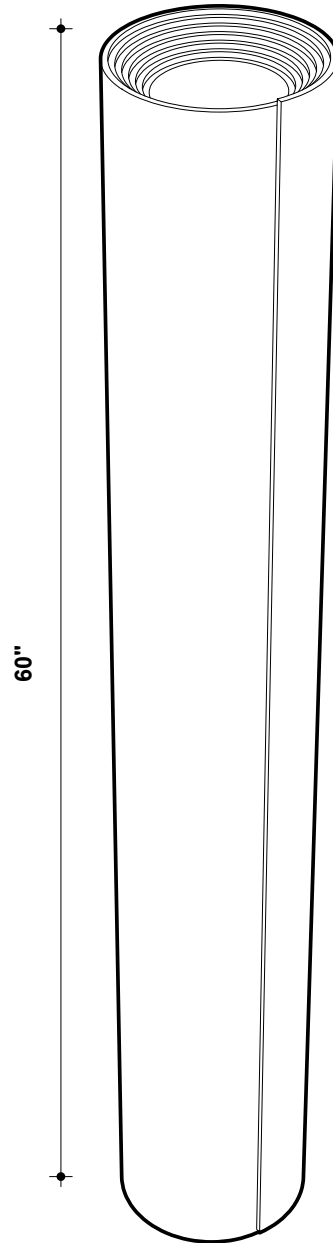
60"

custom widths available

MATERIAL THICKNESS

3mm

custom thicknesses available



① 3MM ROLL



INSTALLATION

Surface installation systems are designed according to site conditions, and maximize efficiency of installation.

Each solution respects the integrity of the project design, budget, and installs easily with simple tools.

DIRECT ATTACHMENT SYSTEM

Attachment solution for pre-constructed ceiling substrates using construction adhesives. Requires minimal skilled installation labor. Ideal for remodeling spaces.

PEEL AND STICK SYSTEM

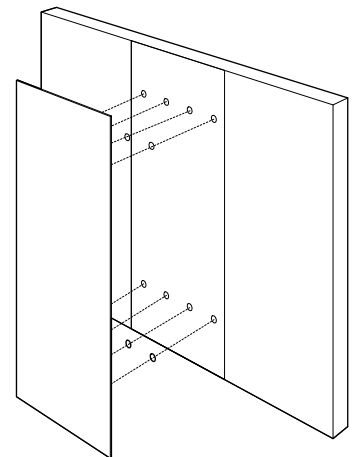
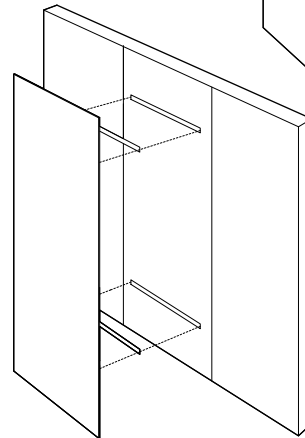
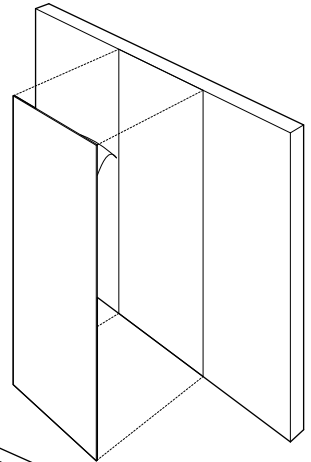
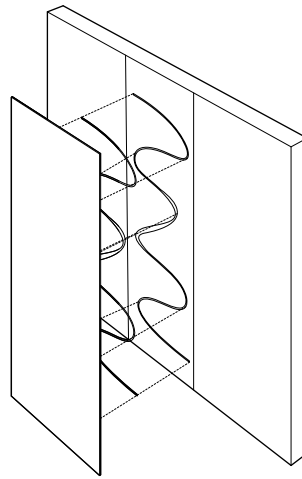
Attachment solution for existing surfaces or substrates using pre-applied adhesive backing. Requires minimal skilled installation labor - simply peel, and stick.

INDIVIDUAL CLIP SYSTEM

Attachment solution for hanging multiple panels in series efficiently. Maintains alignment of panels with a drop-in gravity clip system. Easily installed in post-construction phase.

SNAP MOUNT SYSTEM

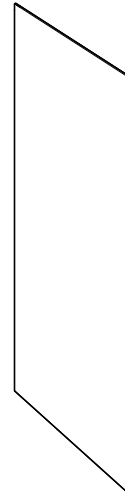
Attachment system for efficient installation via pre-designed modular configurations using snap-locking hardware. Engage us in the design phase for site-specific templates and hardware configurations.



SITE CONDITIONS

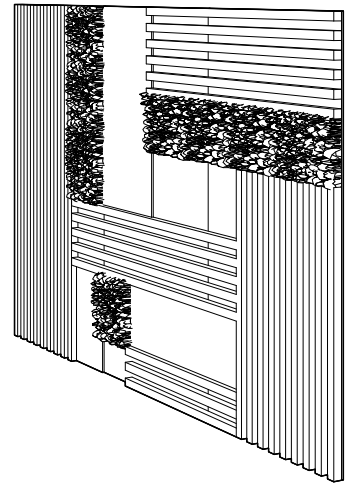
TRANSITION

Surface installations in transition areas are typically simple, low-profile cladding that uses color to assist in wayfinding, and enhances the acoustics of hard surfaces in hallways.



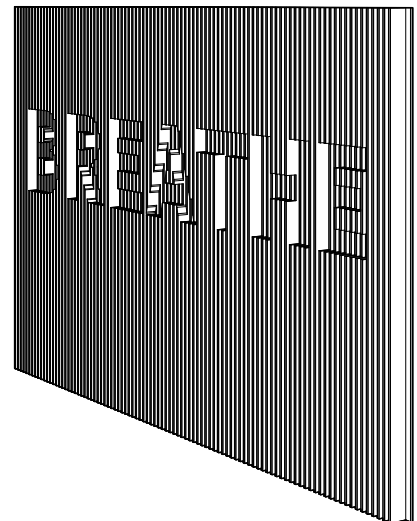
FOCAL POINT

Surface cladding used as a focal point can be infinitely more complex, and can integrate other materials. A focal point gets much more visual attention than transition spaces, and serves artistic merit as well as acoustics.



BRANDING

Any product can be designed with integrated branding opportunities, from color choices to lettering, carving, graphic displays and more.



COLORWAYS

SOUNDCORE® FLEX RECYCLED PET DESIGN FELT



SUSTAINABILITY



WHY WOOL?

Wool has a strong track record. As in, thousands of years strong. The first instances of wool as a textile date back to 1500 BC, and for great reason: wool is a sustainable source of workable fiber, harvested without any harm to the animal.

Wool is cleaned and refined into a more cooperative felt product with an array of natural features, including wrinkle resistance, anti-static, high burning point, insulative properties, shock resistance—the list goes on.

MATERIAL CONSTRUCTION

100% organic Merino or Karakul Wool

PRODUCT CERTIFICATIONS

ASTM E84: Class A, VOC Free (CDPH Standard Method V1.2)



OUR MISSION

EXPERIENTIAL SPACES

Our goal is to create spaces that feel better.

It's easy to visualize a space with architectural acoustics, but even the most detailed renderings couldn't convey the experience of actually being there. When sound is properly controlled within a space, it creates focus and calmness that you can actually feel. We want to help you turn off the droning machinery in the back of your mind. We fabricate custom solutions that visually suit your space while building towards a more soothing holistic experience. This creates spaces where people want to be—where they want to work, where they want to sleep, exercise, create, study, and relax.

