

Johnston Architects, LLC
100 NE Northlake Way,
Suite 200
Seattle, WA 98105
t 206.523.6150
f 206.523.9382

SÄZÄN GROUP
600 Stewart St., Ste 1400
Seattle, Washington 98101
Tel 206.267.1700
Fax 206.267.1701
SAZAN # 911-23005

LEGEND

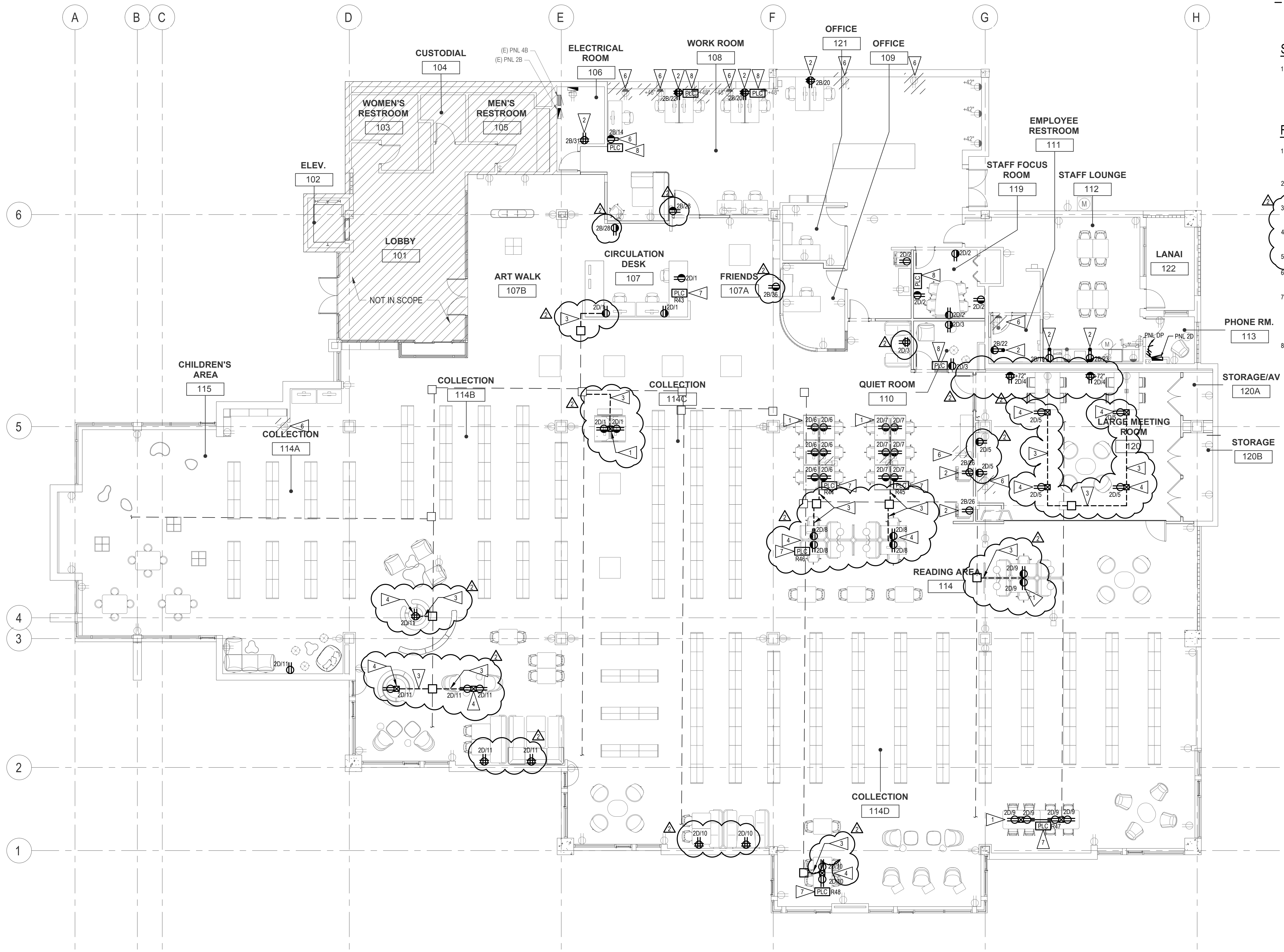
- EXISTING UNDER FLOOR RACEWAY
- - - UNDER FLOOR RACEWAY
- UNDER FLOOR RACEWAY ACCESS

SHEET NOTES

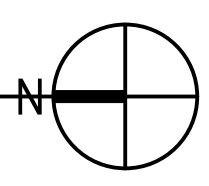
1. REFER TO GENERAL NOTES ON E0.00

FLAG NOTES

1. WORKSTATION POWER AND DATA PROVIDED AS PART OF SYSTEM FURNITURE. PROVIDE POWER/DATA CONNECTIONS VIA EXISTING UNDER FLOOR RACEWAY WHERE POSSIBLE. PROVIDE NEW UNDER FLOOR RACEWAY OUT TO RECEPTACLES AS REQUIRED.
2. PROVIDE NEW RECEPTACLES ON EXISTING DEDICATED CIRCUIT FROM PANEL 2B IN ELECTRICAL ROOM 106. CIRCUIT SPECIFIED ON PLAN.
3. TRENCH EXISTING SLAB TO PROVIDE EXTENSIONS TO EXISTING UNDER FLOOR RACEWAY SYSTEM. COORDINATE SLAB REPAIR WITH ARCHITECT.
4. PROVIDE NEW RECEPTACLES AS INDICATED AND CONNECT TO BRANCH CIRCUIT INDICATED VIA UNDER FLOOR RACEWAY.
5. NOT USED.
6. REMOVE ELECTRICAL DEVICE AS SHOWN. PULL CONDUCTORS BACK TO NEAREST JUNCTION BOX TO REMAIN.
7. PROVIDE PLUG LOAD CONTROL MODULE IN CEILING TO TIE SWITCHED RECEPTACLES INTO LIGHTING CONTROL SYSTEM. WATTSTOPPER LMP-101 OR APPROVED EQUAL. PLUG LOAD CONTROL MODULES TO BE WIRED TO LIGHTING CONTROL RELAY FOR TIME CLOCK CONTROL AND OVERRIDE SWITCHING. REFER TO SHEET E201, LIGHTING RELAY PANEL "LRP-1".
8. PROVIDE PLUG LOAD CONTROL MODULE IN CEILING TO TIE SWITCHED RECEPTACLES INTO LIGHTING CONTROL SYSTEM. WATTSTOPPER LMP-101 OR APPROVED EQUAL. PLUG LOAD CONTROL MODULES TO BE CONTROLLED VIA OCCUPANCY SENSORS.



POWER PLAN
SCALE: 1/8" = 1'-0"



SNO-ISLE EDMONDS LIBRARY
650 MAIN STREET
EDMONDS, WA 98020

DRAWING ISSUE	
DATE	DESCRIPTION
3/31/2023	ISSUE FOR BID
4/19/2023	ADDENDUM #2



SHEET TITLE
POWER PLAN

SHEET NO.
E410

Drawn: NH
Checked: JTB
© 2023 JOHNSTON ARCHITECTS