



EDMONDS LIBRARY

FURNITURE SPECIFICATIONS

BID PACKAGE
07 APRIL 2023

A modern black chair with a wooden base, positioned on the left side of the page. The chair has a sleek, curved backrest and a matching seat, supported by four light-colored wooden legs.

JA

Table of Contents

Project Information..... 3
Submittal & Substitution Protocol..... 3

Section 12 50 00 Specifications..... 4

Tagged Furniture Plan..... 6

Seating & Upholstery8-65
• Furniture Specifications 9
• Upholstery Fabrics 44

Tables & Desks..... 66

Storage..... 85

Miscellaneous..... 90

Rep Contact Information 96

Appendix97-99
• ALT.01 97
• ALT.02 99

Project Information

Project Name & Location

Edmonds Public Library
650 Main Street
Edmonds, WA 98020

Client

Sno-Isle Libraries
7312 35th Ave NE
Marysville, WA 98271

Client Contact

Chy Ross
Assistant Director of Capital Strategy and Planning
360.454.6908 | cross@sno-isle.org

Design Team

Johnston Architects
100 NE Northlake Way Suite 200
Seattle, WA 98105

Design Team Contacts

Mona Zellers
Managing Partner
206.818.3562 | mzellers@johnstonarchitects.com

Lina Baker
Associate Interior Designer
206.523.9364 | lbaker@johnstonarchitects.com

Submittals & Substitution Protocol

Submittals

When submitting your proposal, please reference which purchasing contract(s) you are accessing. The invited group of dealers are not restricted to contract pricing and may, if you choose, provide additional discounts. Please note that Sno-Isle Library System is NOT tax-exempt.

Contract will be awarded based on a holistic evaluation of the following criteria, weighted as follows:

- Quality & Accuracy - 20%
- Service & Installation - 20%
- Overall Cost - 60%
Total = 100%

Substitution Protocol

No substitutions will be accepted except as follows:

If you are unable to procure items from Herman Miller (CH.01A and CH.01B), please price alternate listed in Appendix from 9 to 5 Seating:

- ALT.01

If you are unable to procure items from KI (CH.06 and SF.01) please proceed as follows:

- CH.06 - price alternate ALT.02 as listed in the Appendix.
- SF.01 - Propose an alternate that meets panel size, configuration and finish style/color; Alternate must have full-panel style in both full-glass as well as tackable fabric finish.

Section 12 50 00

Furnishings

Part 1: General

Related Documents

Drawings and general provisions of contract, including General and Supplementary Conditions, apply to work of this section.

Scope

The extent of furnishings and accessories are shown on the drawings, defined in this specification and listed with each item herein. Types of furnishings and accessories specified in the section include, but are not limited to, the following:

- Children's Furniture
- Collection Storage
- Computer Tables
- Desks
- Display
- Laptop Tables
- Lounge Seating
- Meeting Room Tables
- Meeting Room Chairs
- Ottomans
- Outdoor Furniture
- Pillows
- Shelving
- Study Seating
- Study Tables
- Storage
- Task Chairs

Submittals

Product Data:

Manufacturer's descriptive literature shall be submitted, indicating materials, finish, construction installation instructions, and verifying that products meet requirements specified. Manufacturer's recommendations for maintenance and cleaning shall be included. Transmit a copy of each instruction to the Interior Designer.

Samples:

Submit samples of any and all materials that have been specified. This includes, but is not limited to, fabric finish, wood finish (which will be used in the actual production), metal finish, polyurethane finish, solid surface finish, plastic laminate finish, linoleum finish. Samples will be reviewed for color, pattern, texture and finish only. Compliance with all other requirements is the exclusive responsibility of the Contractor. Submit to the Interior Designer for verification and approval prior to ordering.

Quality Assurance

Fire Hazard Classification:

Provide fabric that meets or exceeds the California Flammability Code, Bulletin #117, and conforms to other requirements established herein. For items which, when installed become fixed, provide drawings and details of connection requirements, anchor, etc. for all provisions not included in manufacturer's standard data. Submit two (2) copies of manufacturer's written guarantee of standard warranty for items specified. Supplier: The manufacturer, subsidiary or licensed agent shall be approved to supply the products specified, and to honor any claims against the product presented in accordance with the warranty.

Installer:

The installer or agent shall be qualified to install the specified products by prior experience, demonstrated performance and acceptance of any requirement of the manufacturer or any subsidiary or licensed agent. The installer shall be responsible for an acceptable installation.

Delivery, Storage and Handling:

Under the base bid, the Contractor shall deliver at the job site and install in its designated location all furniture and accessory items specified herein

Section 12 50 00

Furnishings

by the date designated in the Invitation to Bid. Product shall be delivered to the project site in manufacturer's original packaging.

All items shall be protected from damage during handling and deliver and during any storage that may be required by Contractor, prior to delivery.

Delivery shall be made to the job site during normal business hours, 8:00 a.m. to 4:00 p.m. CST, Monday through Friday. The Contractor shall provide adequate facilities and labor for unloading.

Inspect items upon delivery for damage. Minor damages may be repaired provided finished repairs are equal to quality of new work and acceptable to the Owner.

Install furnishings and accessories at the location indicated on the drawings in accordance with manufacturer's instructions. Items shall be installed level, plumb and where indicated, secured. Replace all damaged units as directed by Interior Designer.

Provide protection for all installed units so they will be in perfect condition at the completion of the Project.

The Vendor shall keep the Project premises and surrounding area free from accumulation of waste materials and rubbish caused by operations under the Contract. At completion of the Work, the Vendor shall remove waste materials, rubbish, the Vendor's tools, construction equipment, machinery, and surplus material from and about the Project. Consider blanket wrapping pieces to reduce waste and protecting building walls (including elevator walls) from damage during installation.

Part 2: Products

Products specified herein are identified in terms and are accompanied by project data describing materials, construction and finishes of the specified products. To indicate particular character, quality and design of a specified item, each is listed as per a selected manufacturer and model number.

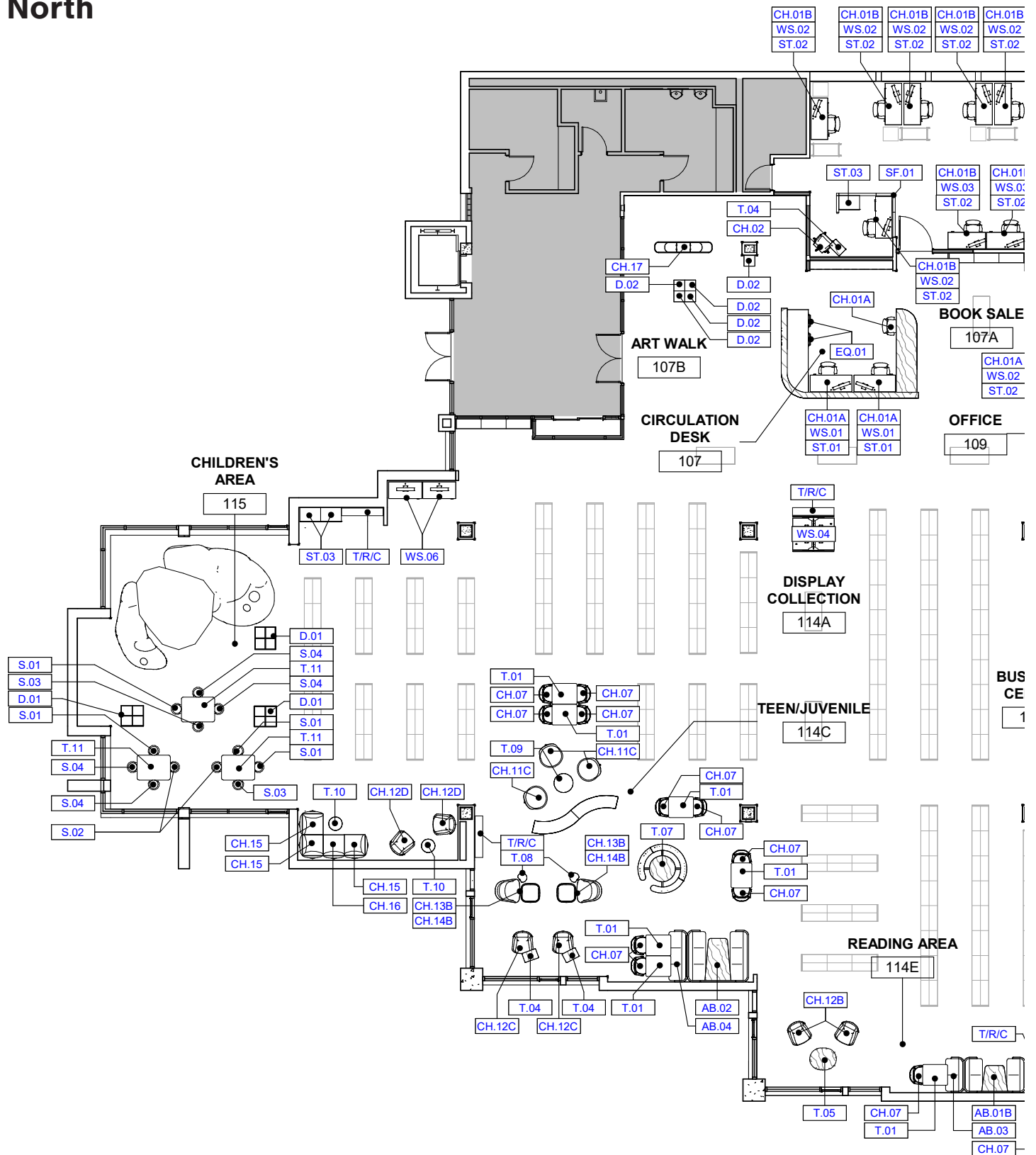
Burden of proof that proposed substitutions shall be equal in quality function an aesthetic to the specified product is on the Bidder and requires prior approval of the Interior Designer. Refer to Invitation and Instructions for Quotation for Furniture, Furnishings and Equipment for proposed substitution instructions.

Part 3: Execution

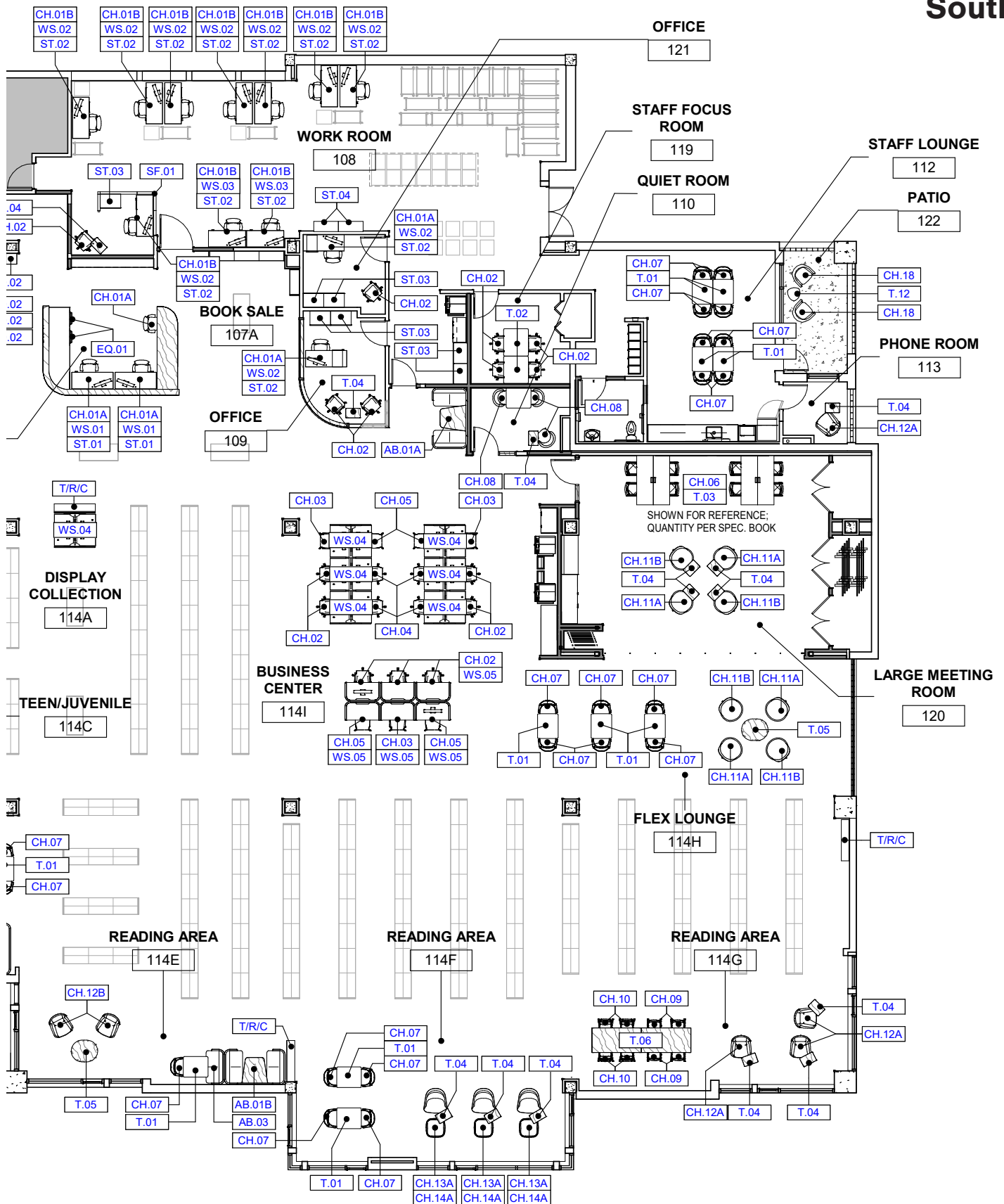
Contractor or any subcontractors shall be responsible for inspection on project sit and approval of installation conditions for this work. Installation shall comply with manufacturer's specification, standards, and procedures. Clean finished installation of dirt and finger marks. Leave work area clean and free of debris.

END OF SECTION 12500: FURNISHING

Furniture Plan: North



Furniture Plan: South



SEATING & UPHOLSTERY



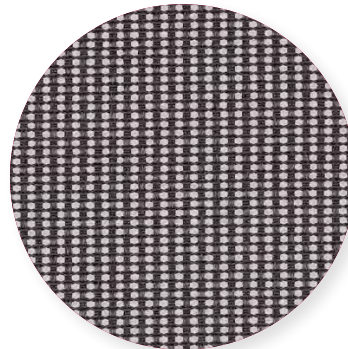
CH.01A (CARPET LOCATIONS)

Project: Edmonds Library

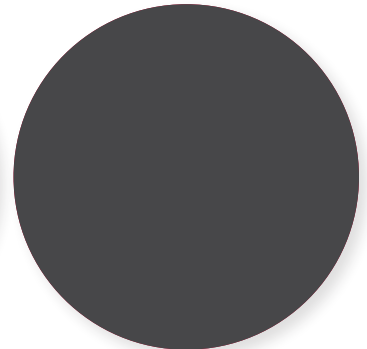
Issued Date: 07 April 2023

DESCRIPTION: Employee Task Chair
QTY. & LOCATION: (3) Circulation Desk 107
(1) Office 109
(1) Office 121

MANUFACTURER: Herman Miller
PRODUCT: Cosm Work Chair, Mid-back
PRODUCT ID: FLC152SFH-G1-G1-G1-SC8-BK
DIMENSIONS: 29"D x 26.75"W x 34"-40.625"H
SEAT HEIGHT: 14.75"-21.375"
ARM STYLE: Height-adjustable
FRAME FINISH: Graphite
CHASSIS FINISH: Graphite
BASE FINISH: Graphite
ARM PAD FINISH: Black
SUSPENSION FINISH: Intercept Graphite, 84501
CASTERS: 2.5" Carpet quiet roll technology



SUSPENSION FINISH



FRAME/CHASSIS/BASE
FINISH

NOTES:

1. Manufacturer to provide all required hardware and instructions for proper installation.
2. Unless otherwise noted, provide heavy-duty nylon furniture glides, diameter to be sized according to item's leg dimension (as large as possible) without being visible. Glide color to best match leg finish.
3. All images, photographs, and renderings of specified items in this package are for general design intent and reference only.

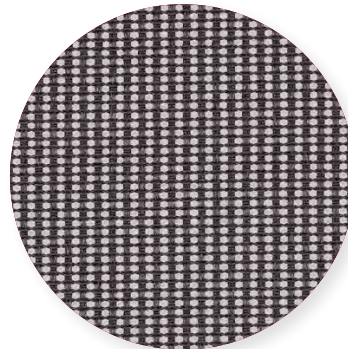
CH.01B (RESILIENT LOCATIONS)

Project: Edmonds Library

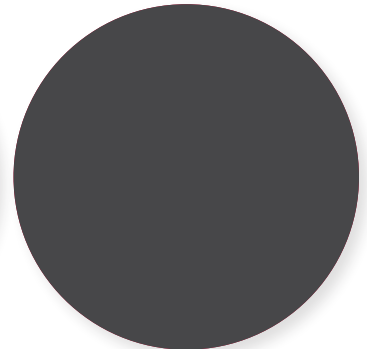
Issued Date: 07 April 2023

DESCRIPTION: Employee Task Chair
QTY. & LOCATION: (10) Staff Work Room

MANUFACTURER: Herman Miller
PRODUCT: Cosm Work Chair, Mid-back
PRODUCT ID: FLC152SFH-G1-G1-G1-SC8-BK
DIMENSIONS: 29"D x 26.75"W x 34"-40.625"H
SEAT HEIGHT: 14.75"-21.375"
ARM STYLE: Height-adjustable
FRAME FINISH: Graphite
CHASSIS FINISH: Graphite
BASE FINISH: Graphite
ARM PAD FINISH: Black
SUSPENSION FINISH: Intercept Graphite, 84501
CASTERS: Hard surface casters



SUSPENSION FINISH



FRAME/CHASSIS/BASE
FINISH

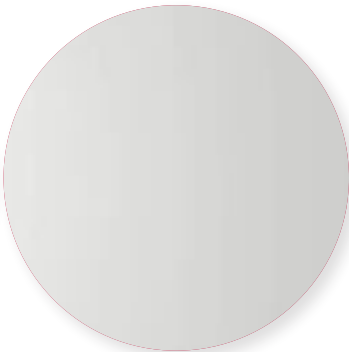
GENERAL NOTES:

1. Manufacturer to provide all required hardware and instructions for proper installation.
2. Unless otherwise noted, provide heavy-duty nylon furniture glides, diameter to be sized according to item's leg dimension (as large as possible) without being visible. Glide color to best match leg finish.
3. All images, photographs, and renderings of specified items in this package are for general design intent and reference only.

DESCRIPTION:	Task Chair - With Arms & Casters
QTY. & LOCATION:	(7) Business Center 114 (1) Work Room 108 (2) Office 109 (1) Office 121 (4) Staff Focus Room 119
MANUFACTURER:	Andreu World America
PRODUCT:	Flex Executive Chair, low-back
PRODUCT ID:	SO1859
DIMENSIONS:	665mm x 615mm x 835mm
SEAT HEIGHT:	440mm, adjustable
ARM HEIGHT:	25.59", fixed
BASE:	Central Aluminum, 5-wheels
BASE FINISH:	ALUP - Polished Aluminum
SHELL:	Upholstered
SHELL FINISH:	UPH-02



UPHOLSTERY



BASE FINISH

GENERAL NOTES:

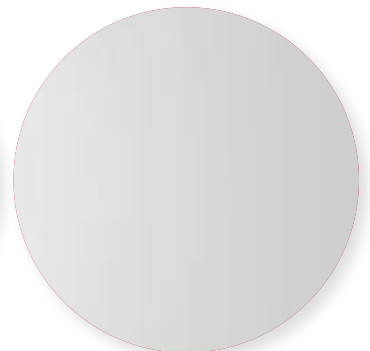
1. Manufacturer to provide all required hardware and instructions for proper installation.
2. Unless otherwise noted, provide heavy-duty nylon furniture glides, diameter to be sized according to item's leg dimension (as large as possible) without being visible. Glide color to best match leg finish.
3. All images, photographs, and renderings of specified items in this package are for general design intent and reference only.

DESCRIPTION: Task Chair - With Arms, no Casters
QTY. & LOCATION: (3) Business Center 114

MANUFACTURER: Andreu World America
PRODUCT: Flex Executive Chair, low-back
PRODUCT ID: SO1844
DIMENSIONS: 600mm x 590mm x 845mm
SEAT HEIGHT: 450mm, adjustable
BASE: Swivel, 4-star with auto-return
BASE FINISH: ALUP - Polished Aluminum
SHELL: Upholstered
SHELL FINISH: UPH-02



UPHOLSTERY



BASE FINISH

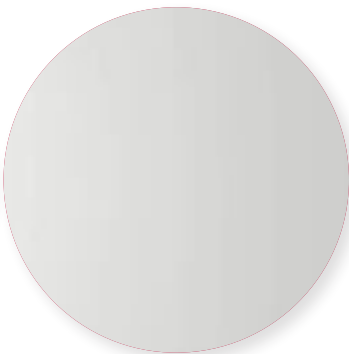
GENERAL NOTES:

1. Manufacturer to provide all required hardware and instructions for proper installation.
2. Unless otherwise noted, provide heavy-duty nylon furniture glides, diameter to be sized according to item's leg dimension (as large as possible) without being visible. Glide color to best match leg finish.
3. All images, photographs, and renderings of specified items in this package are for general design intent and reference only.

DESCRIPTION:	Task Chair - Armless, with Casters
QTY. & LOCATION:	(4) Business Center 114
MANUFACTURER:	Andreu World America
PRODUCT:	Flex Executive Chair, low-back
PRODUCT ID:	SO1856
DIMENSIONS:	665mm x 615mm x 835mm
SEAT HEIGHT:	440mm, adjustable
BASE:	Central Aluminum, 5-wheels
BASE FINISH:	ALUP - Polished Aluminum
SHELL:	Upholstered
SHELL FINISH	UPH-02



UPHOLSTERY



BASE FINISH

GENERAL NOTES:

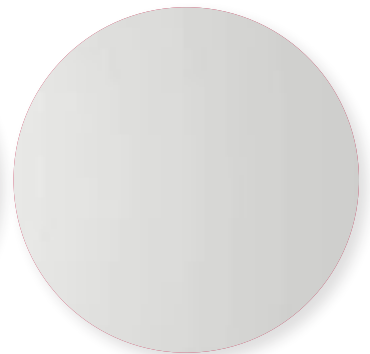
1. Manufacturer to provide all required hardware and instructions for proper installation.
2. Unless otherwise noted, provide heavy-duty nylon furniture glides, diameter to be sized according to item's leg dimension (as large as possible) without being visible. Glide color to best match leg finish.
3. All images, photographs, and renderings of specified items in this package are for general design intent and reference only.

DESCRIPTION: Task Chair - Armless, no Casters
QTY. & LOCATION: (4) Business Center 114

MANUFACTURER: Andreu World America
PRODUCT: Flex Executive Chair, low-back
PRODUCT ID: SI 1838
DIMENSIONS: 600mm x 590mm x 845mm
SEAT HEIGHT: 450mm, adjustable
BASE: Swivel, 4-star with auto-return
BASE FINISH: ALUP - Polished Aluminum
SHELL: Upholstered
SHELL FINISH UPH-02



UPHOLSTERY



BASE FINISH

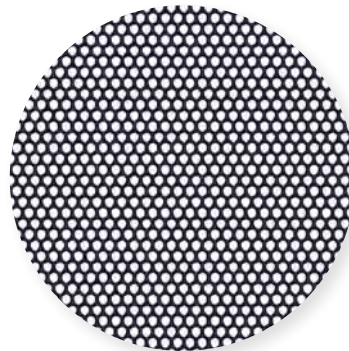
GENERAL NOTES:

1. Manufacturer to provide all required hardware and instructions for proper installation.
2. Unless otherwise noted, provide heavy-duty nylon furniture glides, diameter to be sized according to item's leg dimension (as large as possible) without being visible. Glide color to best match leg finish.
3. All images, photographs, and renderings of specified items in this package are for general design intent and reference only.

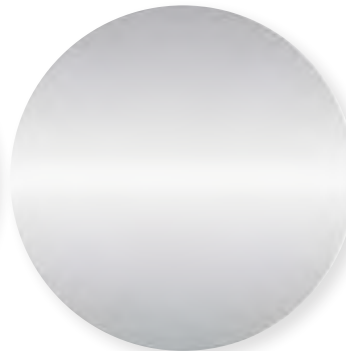
DESCRIPTION: Stackable side chairs
QTY. & LOCATION: (70) Large Meeting Room 120

MANUFACTURER: KI
PRODUCT: Opt4 - High Density Stack Chair
PRODUCT ID: O4MSMB.CH.O4BL.NG
DIMENSIONS: 21-13/16"D x 32-3/16"H x 19.75"W
SEAT HEIGHT: 17.75"
BASE: Sled
BASE FINISH: CH - Chrome
GLIDES: NG - Nylon Glides, non-ganging
BACK: Mesh
BACK FINISH: O4BL - Black
SEAT: Mesh
SEAT FINISH: O4BL - Black
STORAGE: (2) Transport Dolly for High Density Chair, Poly or Mesh Seat
 - Model: HRDPT.O4SD.BL

DIMENSIONS STORED: (2) Include universal dolly handle
 - Model: HRDPT.UDH.BL
 Maximum stack = 38 chairs
 22-3/8"w x 38-1/4"d



SEAT & BACK



BASE FINISH



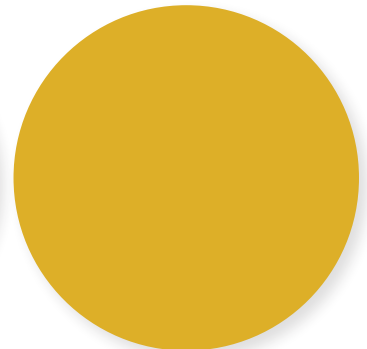
GENERAL NOTES:

1. Manufacturer to provide all required hardware and instructions for proper installation.
2. Unless otherwise noted, provide heavy-duty nylon furniture glides, diameter to be sized according to item's leg dimension (as large as possible) without being visible. Glide color to best match leg finish.
3. All images, photographs, and renderings of specified items in this package are for general design intent and reference only.

DESCRIPTION:	Side chair with arms
QTY. & LOCATION:	(10) Teen/Juvenile 114C (1) Reading Area 114E (4) Reading Area 114F (6) Flex Lounge 114H (8) Staff Lounge 112
MANUFACTURER:	Hightower
PRODUCT:	Hari Guest chair, with arms
PRODUCT ID:	ONHRGC150
DIMENSIONS:	28.25"W x 26"D x 32"H
SEAT HEIGHT:	17.5"
ARM HEIGHT:	25"
FRAME COLOR:	Custom, RAL 1012 Lemon Yellow
UPHOLSTERY:	COM - UPH-01



UPHOLSTERY



FRAME FINISH

GENERAL NOTES:

1. Manufacturer to provide all required hardware and instructions for proper installation.
2. Unless otherwise noted, provide heavy-duty nylon furniture glides, diameter to be sized according to item's leg dimension (as large as possible) without being visible. Glide color to best match leg finish.
3. All images, photographs, and renderings of specified items in this package are for general design intent and reference only.

DESCRIPTION: Upholstered Side Chair
QTY. & LOCATION: (3) Quiet Room 110

MANUFACTURER: Hightower
PRODUCT: Capri Guest Chair
PRODUCT ID: GZ3300
DIMENSIONS: 25.5"W x 25.75"D x 30.75"H
SEAT HEIGHT: 18.5"
BASE: 4 wood legs
BASE FINISH: Clear Lacquered Oak
UPHOLSTERY: UPH-07



UPHOLSTERY



BASE FINISH

GENERAL NOTES:

1. Manufacturer to provide all required hardware and instructions for proper installation.
2. Unless otherwise noted, provide heavy-duty nylon furniture glides, diameter to be sized according to item's leg dimension (as large as possible) without being visible. Glide color to best match leg finish.
3. All images, photographs, and renderings of specified items in this package are for general design intent and reference only.

DESCRIPTION:	Upholstered Chair
QTY. & LOCATION:	(4) Reading Area 114G
MANUFACTURER:	NaughtOne
PRODUCT:	Viv Wood Chair
PRODUCT ID:	VIVCHWD
DIMENSIONS:	20.5"W x 22"D x 30.5"H
SEAT HEIGHT:	17.5"
BASE:	Wood
BASE FINISH:	Solid Oak
UPHOLSTERY:	UPH-05
NOTES:	Rated to 160kg static load



UPHOLSTERY



LEG FINISH

GENERAL NOTES:

1. Manufacturer to provide all required hardware and instructions for proper installation.
2. Unless otherwise noted, provide heavy-duty nylon furniture glides, diameter to be sized according to item's leg dimension (as large as possible) without being visible. Glide color to best match leg finish.
3. All images, photographs, and renderings of specified items in this package are for general design intent and reference only.

DESCRIPTION:	Upholstered bar stools
QTY. & LOCATION:	(4) Reading Area 114G
MANUFACTURER:	NaughtOne
PRODUCT:	Viv Wood Barstool Chair
PRODUCT ID:	VIVBSWD
DIMENSIONS:	22"W x 22"D x 39.5"H
SEAT HEIGHT:	29.5"
BASE:	Wood
BASE FINISH:	Solid Oak
UPHOLSTERY:	UPH-06
NOTES:	Rated to 160kg static load



UPHOLSTERY



BASE FINISH

GENERAL NOTES:

- 1. Manufacturer to provide all required hardware and instructions for proper installation.
- 2. Unless otherwise noted, provide heavy-duty nylon furniture glides, diameter to be sized according to item’s leg dimension (as large as possible) without being visible. Glide color to best match leg finish.
- 3. All images, photographs, and renderings of specified items in this package are for general design intent and reference only.

CH.11A

Project: Edmonds Library
Issued Date: 07 April 2023

DESCRIPTION: Mobile upholstered lounge chair
QTY. & LOCATION: (2) Large Meeting Room 120
(2) Flex Lounge 114H

MANUFACTURER: Bernhardt Design
PRODUCT: Mitt Lounge Chair, with handle
PRODUCT ID: 5720
DIMENSIONS: 33.5"W x 33.5"D x 32"H
SEAT HEIGHT: 16.5"
BASE: Weight-activated Casters
STITCHING: Standard Stitch
UPHOLSTERY: UPH-11



UPHOLSTERY

GENERAL NOTES:

1. Manufacturer to provide all required hardware and instructions for proper installation.
2. Unless otherwise noted, provide heavy-duty nylon furniture glides, diameter to be sized according to item's leg dimension (as large as possible) without being visible. Glide color to best match leg finish.
3. All images, photographs, and renderings of specified items in this package are for general design intent and reference only.

DESCRIPTION: Mobile upholstered lounge chair
QTY. & LOCATION: (2) Large Meeting Room 120
(2) Flex Lounge 114H

MANUFACTURER: Bernhardt Design
PRODUCT: Mitt Lounge Chair, with handle
PRODUCT ID: 5720
DIMENSIONS: 33.5"W x 33.5"D x 32"H
SEAT HEIGHT: 16.5"
BASE: Weight-activated Casters
STITCHING: Standard stitch
UPHOLSTERY: UPH-22



UPHOLSTERY

GENERAL NOTES:

1. Manufacturer to provide all required hardware and instructions for proper installation.
2. Unless otherwise noted, provide heavy-duty nylon furniture glides, diameter to be sized according to item's leg dimension (as large as possible) without being visible. Glide color to best match leg finish.
3. All images, photographs, and renderings of specified items in this package are for general design intent and reference only.

DESCRIPTION: Mobile upholstered lounge chair
QTY. & LOCATION: (3) Teen/Juvenile 114C

MANUFACTURER: Bernhardt Design
PRODUCT: Mitt Lounge Chair, with handle
PRODUCT ID: 5720
DIMENSIONS: 33.5"W x 33.5"D x 32"H
SEAT HEIGHT: 16.5"
BASE: Weight-activated Casters
STITCHING: Standard Stitch
UPHOLSTERY: UPH-17



UPHOLSTERY

GENERAL NOTES:

1. Manufacturer to provide all required hardware and instructions for proper installation.
2. Unless otherwise noted, provide heavy-duty nylon furniture glides, diameter to be sized according to item's leg dimension (as large as possible) without being visible. Glide color to best match leg finish.
3. All images, photographs, and renderings of specified items in this package are for general design intent and reference only.

DESCRIPTION:	Highback Armchair
QTY. & LOCATION:	(3) Reading Area 114G (1) Phone Room 113
MANUFACTURER:	Keilhauer
PRODUCT:	Ellaby Midback Arm Chair
PRODUCT ID:	71061
DIMENSIONS:	29.75"W x 31.75"D x 39"H
SEAT HEIGHT:	17.5"
ARM HEIGHT:	24"
BASE:	Ash
BASE FINISH:	AHN - Natural
UPHOLSTERY:	UPH-09



UPHOLSTERY

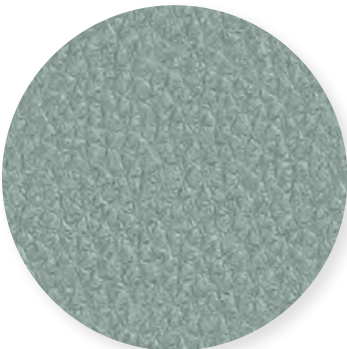


BASE FINISH

GENERAL NOTES:

1. Manufacturer to provide all required hardware and instructions for proper installation.
2. Unless otherwise noted, provide heavy-duty nylon furniture glides, diameter to be sized according to item's leg dimension (as large as possible) without being visible. Glide color to best match leg finish.
3. All images, photographs, and renderings of specified items in this package are for general design intent and reference only.

DESCRIPTION:	Highback Armchair
QTY. & LOCATION:	(2) Reading Area 114E
MANUFACTURER:	Keilhauer
PRODUCT:	Ellaby Midback Arm Chair
PRODUCT ID:	71061
DIMENSIONS:	29.75"W x 31.75"D x 39"H
SEAT HEIGHT:	17.5"
ARM HEIGHT:	24"
BASE:	Ash
BASE FINISH:	AHN - Natural
UPHOLSTERY:	UPH-12



UPHOLSTERY



BASE FINISH

GENERAL NOTES:

- 1. Manufacturer to provide all required hardware and instructions for proper installation.
- 2. Unless otherwise noted, provide heavy-duty nylon furniture glides, diameter to be sized according to item's leg dimension (as large as possible) without being visible. Glide color to best match leg finish.
- 3. All images, photographs, and renderings of specified items in this package are for general design intent and reference only.

DESCRIPTION: Highback Armchair
QTY. & LOCATION: (2) Teen/Juvenile 114C

MANUFACTURER: Keilhauer
PRODUCT: Ellaby Midback Arm Chair
PRODUCT ID: 71061
DIMENSIONS: 29.75"W x 31.75"D x 39"H
SEAT HEIGHT: 17.5"
ARM HEIGHT: 24"
BASE: Ash
BASE FINISH: AHN - Natural
SEAT & BACK: UPH-12
BODY: UPH-10
NOTES: Combo cover for separate Seat/
Back and Body upholstery
finishes



BODY



SEAT & BACK



BASE FINISH

GENERAL NOTES:

1. Manufacturer to provide all required hardware and instructions for proper installation.
2. Unless otherwise noted, provide heavy-duty nylon furniture glides, diameter to be sized according to item's leg dimension (as large as possible) without being visible. Glide color to best match leg finish.
3. All images, photographs, and renderings of specified items in this package are for general design intent and reference only.

DESCRIPTION:	Highback Armchair
QTY. & LOCATION:	(2) Children's Area 115
MANUFACTURER:	Keilhauer
PRODUCT:	Ellaby Midback Arm Chair
PRODUCT ID:	71061
DIMENSIONS:	29.75"W x 31.75"D x 39"H
SEAT HEIGHT:	17.5"
ARM HEIGHT:	24"
BASE:	Ash
BASE FINISH:	AHN - Natural
SEAT & BACK:	UPH-21
BODY:	UPH-20
NOTES:	Combo cover for separate Seat/ Back and Body upholstery finishes



BODY



SEAT & BACK



BASE FINISH

GENERAL NOTES:

1. Manufacturer to provide all required hardware and instructions for proper installation.
2. Unless otherwise noted, provide heavy-duty nylon furniture glides, diameter to be sized according to item's leg dimension (as large as possible) without being visible. Glide color to best match leg finish.
3. All images, photographs, and renderings of specified items in this package are for general design intent and reference only.

CH.13A

Project: Edmonds Library

Issued Date: 07 April 2023

DESCRIPTION: Swivel base lounge chair
QTY. & LOCATION: (3) Reading Area114F

MANUFACTURER: Hightower
PRODUCT: Gimbal Highback
PRODUCT ID: HT4109
DIMENSIONS: 37"W x 38.25"D x 48"H
SEAT HEIGHT: 17.75"
BASE: 90° swivel with Auto-Return
UPHOLSTERY: UPH-14
NOTE: Install with CH.14A



UPHOLSTERY

GENERAL NOTES:

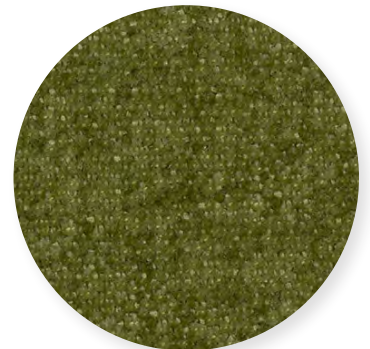
1. Manufacturer to provide all required hardware and instructions for proper installation.
2. Unless otherwise noted, provide heavy-duty nylon furniture glides, diameter to be sized according to item's leg dimension (as large as possible) without being visible. Glide color to best match leg finish.
3. All images, photographs, and renderings of specified items in this package are for general design intent and reference only.

CH.13B

Project: Edmonds Library
Issued Date: 07 April 2023

DESCRIPTION: Swivel base lounge chair
QTY. & LOCATION: (2) Teen/Juvenile 114C

MANUFACTURER: Hightower
PRODUCT: Gimbal Highback
PRODUCT ID: HT4109
DIMENSIONS: 37"W x 38.25"D x 48"H
SEAT HEIGHT: 17.75"
BASE: 90° swivel with Auto-Return
UPHOLSTERY: UPH-13
NOTE: Install with CH.14B



UPHOLSTERY

GENERAL NOTES:

1. Manufacturer to provide all required hardware and instructions for proper installation.
2. Unless otherwise noted, provide heavy-duty nylon furniture glides, diameter to be sized according to item's leg dimension (as large as possible) without being visible. Glide color to best match leg finish.
3. All images, photographs, and renderings of specified items in this package are for general design intent and reference only.

DESCRIPTION: Upholstered Ottoman
QTY. & LOCATION: (3) Reading Area114F

MANUFACTURER: Hightower
PRODUCT: Gimbal Ottoman
PRODUCT ID: HT4120
DIMENSIONS: 13.7"H x 37"Ø
UPHOLSTERY: UPH-14



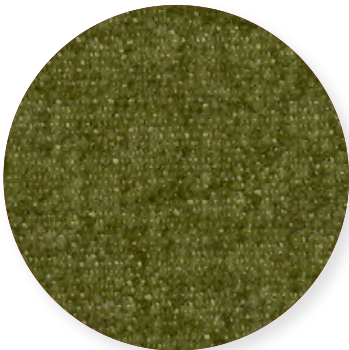
UPHOLSTERY

GENERAL NOTES:

- 1. Manufacturer to provide all required hardware and instructions for proper installation.
- 2. Unless otherwise noted, provide heavy-duty nylon furniture glides, diameter to be sized according to item's leg dimension (as large as possible) without being visible. Glide color to best match leg finish.
- 3. All images, photographs, and renderings of specified items in this package are for general design intent and reference only.

DESCRIPTION: Upholstered Ottoman
QTY. & LOCATION: (2) Teen/Juvenile 114C

MANUFACTURER: Hightower
PRODUCT: Gimbal Ottoman
PRODUCT ID: HT4120
DIMENSIONS: 13.7"H x 37"Ø
UPHOLSTERY: UPH-13



UPHOLSTERY

GENERAL NOTES:

1. Manufacturer to provide all required hardware and instructions for proper installation.
2. Unless otherwise noted, provide heavy-duty nylon furniture glides, diameter to be sized according to item's leg dimension (as large as possible) without being visible. Glide color to best match leg finish.
3. All images, photographs, and renderings of specified items in this package are for general design intent and reference only.

DESCRIPTION: Low upholstered lounge chair
QTY. & LOCATION: (3) Children's Area 115

MANUFACTURER: Bernhardt Design
PRODUCT: Zip Corner Chair
PRODUCT ID: 5871B - Corner Seat
DIMENSIONS: 34"W x 34"D x 32.5"H
SEAT HEIGHT: 11"
HANDLE: L - Black Belting
UPHOLSTERY: UPH-18



UPHOLSTERY

GENERAL NOTES:

1. Manufacturer to provide all required hardware and instructions for proper installation.
2. Unless otherwise noted, provide heavy-duty nylon furniture glides, diameter to be sized according to item's leg dimension (as large as possible) without being visible. Glide color to best match leg finish.
3. All images, photographs, and renderings of specified items in this package are for general design intent and reference only.

DESCRIPTION: Low upholstered lounge chair
QTY. & LOCATION: (1) Children's Area 115

MANUFACTURER: Bernhardt Design
PRODUCT: Zip Chair
PRODUCT ID: 5870B - Single Seat
DIMENSIONS: 30.5"W x 34"D x 32.5"H
SEAT HEIGHT: 11"
HANDLE: L - Black Belting
UPHOLSTERY: UPH-18



UPHOLSTERY

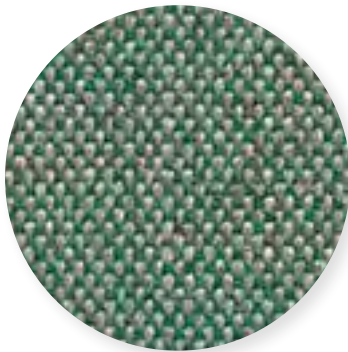
GENERAL NOTES:

1. Manufacturer to provide all required hardware and instructions for proper installation.
2. Unless otherwise noted, provide heavy-duty nylon furniture glides, diameter to be sized according to item's leg dimension (as large as possible) without being visible. Glide color to best match leg finish.
3. All images, photographs, and renderings of specified items in this package are for general design intent and reference only.

DESCRIPTION: 3-seat bench
QTY. & LOCATION: (1) Art Walk 107B

MANUFACTURER: Hightower
PRODUCT: Breck Large Pill Bench
Breck Large Pill Seat Pad

PRODUCT ID: BR3800 + BR3850
DIMENSIONS: 15"W x 79"L x 16"H
SEAT HEIGHT: 16"
PAD LENGTH: 54"
BASE: Upholstered
BASE FINISH: UPH-08
PAD FINISH: UPH-02
TOP FINISH: Ash Veneer



BASE



SEAT PAD



TOP FINISH

GENERAL NOTES:

1. Manufacturer to provide all required hardware and instructions for proper installation.
2. Unless otherwise noted, provide heavy-duty nylon furniture glides, diameter to be sized according to item's leg dimension (as large as possible) without being visible. Glide color to best match leg finish.
3. All images, photographs, and renderings of specified items in this package are for general design intent and reference only.

DESCRIPTION: Outdoor Lounge Chairs
QTY. & LOCATION: (2) Patio 122

MANUFACTURER: Coalesse
PRODUCT: Emu Lyze Lounge Chair
PRODUCT ID: COEM5617
DIMENSIONS: 28.5"D x 30"W x 28.75"H
SEAT HEIGHT: 15.75"
ARM HEIGHT: 25.25"
FRAME: Powdercoat aluminum
FRAME FINISH: 7234 EMU Black
BACK/ARMS: Painted stainless steel
BACK/ARMS FINISH: 7234 EMU Black



FINISH

GENERAL NOTES:

1. Manufacturer to provide all required hardware and instructions for proper installation.
2. Unless otherwise noted, provide heavy-duty nylon furniture glides, diameter to be sized according to item's leg dimension (as large as possible) without being visible. Glide color to best match leg finish.
3. All images, photographs, and renderings of specified items in this package are for general design intent and reference only.

DESCRIPTION: Children's Stacking Stools
QTY. & LOCATION: (4) Children's Area 115

MANUFACTURER: Freshcoast by Leland
PRODUCT: Handy Polypropylene Stool
PRODUCT ID: HFC-P-SH12-WT
DIMENSIONS: 14.75"W x 13.75"D
SEAT HEIGHT: 12"
FINISH: WT - White



FINISH

GENERAL NOTES:

1. Manufacturer to provide all required hardware and instructions for proper installation.
2. Unless otherwise noted, provide heavy-duty nylon furniture glides, diameter to be sized according to item's leg dimension (as large as possible) without being visible. Glide color to best match leg finish.
3. All images, photographs, and renderings of specified items in this package are for general design intent and reference only.

DESCRIPTION: Children's Stacking Stools
QTY. & LOCATION: (2) Children's Area 115

MANUFACTURER: Freshcoast by Leland
PRODUCT: Handy Polypropylene Stool
PRODUCT ID: HFC-P-SH14-WT
DIMENSIONS: 15.25"W x 14"D
SEAT HEIGHT: 14"
FINISH: WT - White



FINISH

GENERAL NOTES:

1. Manufacturer to provide all required hardware and instructions for proper installation.
2. Unless otherwise noted, provide heavy-duty nylon furniture glides, diameter to be sized according to item's leg dimension (as large as possible) without being visible. Glide color to best match leg finish.
3. All images, photographs, and renderings of specified items in this package are for general design intent and reference only.

DESCRIPTION: Children's Stacking Stools
QTY. & LOCATION: (2) Children's Area 115

MANUFACTURER: Freshcoast by Leland
PRODUCT: Handy Polypropylene Stool
PRODUCT ID: HFC-P-SH16-WT
DIMENSIONS: 15.5"W x 14.25"D
SEAT HEIGHT: 16"
FINISH: WT - White



FINISH

GENERAL NOTES:

1. Manufacturer to provide all required hardware and instructions for proper installation.
2. Unless otherwise noted, provide heavy-duty nylon furniture glides, diameter to be sized according to item's leg dimension (as large as possible) without being visible. Glide color to best match leg finish.
3. All images, photographs, and renderings of specified items in this package are for general design intent and reference only.

DESCRIPTION: Children's Stacking Stools
QTY. & LOCATION: (4) Children's Area 115
MANUFACTURER: Freshcoast by Leland
PRODUCT: Handy Polypropylene Stool
PRODUCT ID: HFC-P-SH17-WT
DIMENSIONS: 15.75"W x 14.25"D
SEAT HEIGHT: 17.5"
FINISH: WT - White



FINISH

GENERAL NOTES:

1. Manufacturer to provide all required hardware and instructions for proper installation.
2. Unless otherwise noted, provide heavy-duty nylon furniture glides, diameter to be sized according to item's leg dimension (as large as possible) without being visible. Glide color to best match leg finish.
3. All images, photographs, and renderings of specified items in this package are for general design intent and reference only.

DESCRIPTION:	Acoustic Booth - 2 seat
QTY. & LOCATION:	(1) Business Center 114
MANUFACTURER:	NaughtOne
PRODUCT:	Pullman Booth, 2-seat wide
PRODUCT ID:	PULBW2H
DIMENSIONS:	88.5"W x 51"D x 51"H
SEAT HEIGHT:	18"
TABLE DIMENSIONS:	37.5"L x 37.5"/26.5"W
TABLE HEIGHT:	29.6"
TABLE FINISH:	Oak Veneer
TABLE EDGE:	Reverse chamfer, polished MDF
LEG:	Solid Oak Legs
LEG FINISH:	Oak
UPHOLSTERY:	UPH-02



EDGE



UPHOLSTERY



WOOD

GENERAL NOTES:

- 1. Manufacturer to provide all required hardware and instructions for proper installation.
- 2. Unless otherwise noted, provide heavy-duty nylon furniture glides, diameter to be sized according to item's leg dimension (as large as possible) without being visible. Glide color to best match leg finish.
- 3. All images, photographs, and renderings of specified items in this package are for general design intent and reference only.

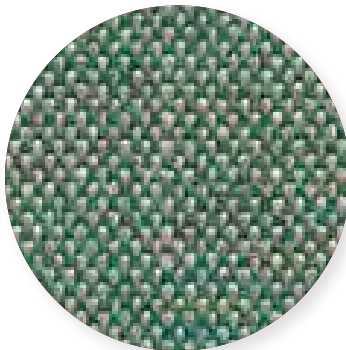
AB.01B

Project: Edmonds Library
Issued Date: 07 April 2023

DESCRIPTION:	Acoustic Booth - 2 seat
QTY. & LOCATION:	(1) Reading Area 114E
MANUFACTURER:	NaughtOne
PRODUCT:	Pullman Booth, 2-seat wide
PRODUCT ID:	PULBW2H
DIMENSIONS:	88.5"W x 51"D x 51"H
SEAT HEIGHT:	18"
TABLE DIMENSIONS:	37.5"L x 37.5"/26.5"W
TABLE HEIGHT:	29.6"
TABLE FINISH:	Oak Veneer
TABLE EDGE:	Reverse chamfer, polished MDF
LEG:	Solid Oak Legs
LEG FINISH:	Oak
UPHOLSTERY:	UPH-08



EDGE



UPHOLSTERY



WOOD

GENERAL NOTES:

1. Manufacturer to provide all required hardware and instructions for proper installation.
2. Unless otherwise noted, provide heavy-duty nylon furniture glides, diameter to be sized according to item's leg dimension (as large as possible) without being visible. Glide color to best match leg finish.
3. All images, photographs, and renderings of specified items in this package are for general design intent and reference only.

DESCRIPTION: Acoustic Booth - 3 seat
QTY. & LOCATION: (1) Teen/Juvenile 114C

MANUFACTURER: NaughtOne
PRODUCT: Pullman Booth, 3-seat wide
PRODUCT ID: PULBW3H
DIMENSIONS: 88.5"W x 75"D x 51"H
SEAT HEIGHT: 18"
TABLE DIMENSIONS: 61"L x 37.5"/26.5"W
TABLE HEIGHT: 29.6"
TABLE FINISH: Oak Veneer
TABLE EDGE: Reverse chamfer, polished MDF
LEG: Solid Oak Legs
LEG FINISH: Oak
UPHOLSTERY: UPH-04



EDGE



UPHOLSTERY



WOOD

GENERAL NOTES:

1. Manufacturer to provide all required hardware and instructions for proper installation.
2. Unless otherwise noted, provide heavy-duty nylon furniture glides, diameter to be sized according to item's leg dimension (as large as possible) without being visible. Glide color to best match leg finish.
3. All images, photographs, and renderings of specified items in this package are for general design intent and reference only.

DESCRIPTION: Acoustic Sofa - 2 seat
QTY. & LOCATION: (1) Reading Area 114E

MANUFACTURER: NaughtOne
PRODUCT: Pullman Sofa with Legs, 2-seat
PRODUCT ID: PUL2H
DIMENSIONS: 51"W x 26.5"D x 51"H
SEAT HEIGHT: 18"
LEG: Solid Oak Legs
LEG FINISH: Oak
UPHOLSTERY: UPH-08



UPHOLSTERY



WOOD

GENERAL NOTES:

1. Manufacturer to provide all required hardware and instructions for proper installation.
2. Unless otherwise noted, provide heavy-duty nylon furniture glides, diameter to be sized according to item's leg dimension (as large as possible) without being visible. Glide color to best match leg finish.
3. All images, photographs, and renderings of specified items in this package are for general design intent and reference only.

DESCRIPTION: Acoustic Sofa - 3 seat
QTY. & LOCATION: (1) Teen/Juvenile 114C

MANUFACTURER: NaughtOne
PRODUCT: Pullman Sofa with Legs, 3-seat
PRODUCT ID: PUL3H
DIMENSIONS: 75"W x 26.5"D x 51"H
SEAT HEIGHT: 18"
LEG: Solid Oak Legs
LEG FINISH: Oak
UPHOLSTERY: UPH-04



UPHOLSTERY



WOOD

GENERAL NOTES:

1. Manufacturer to provide all required hardware and instructions for proper installation.
2. Unless otherwise noted, provide heavy-duty nylon furniture glides, diameter to be sized according to item's leg dimension (as large as possible) without being visible. Glide color to best match leg finish.
3. All images, photographs, and renderings of specified items in this package are for general design intent and reference only.

UPH-01

Project: Edmonds Library
Issued Date: 07 April 2023

APPLIED TO:	CH.07
MANUFACTURER:	Pallas Textiles
PATTERN NAME:	Magique
COLOR:	Curry
PRODUCT ID:	27.337.119
WIDTH:	54"
CONTENT:	100% PCR Polyester
FINISH:	Stain resistant
BACKING:	Acrylic
ABRASION:	63,000 double rubs
FLAMMABILITY:	NFPA 260 - Class 1
CLEANING CODE:	W/S, Bleach Cleanable (10:1)



-
- GENERAL NOTES:**
- 1. Provide CFA prior to completing the order and shipping to manufacturer.
 - 2. Furniture manufacturer to determine quantity required.

UPH-02

Project: Edmonds Library
Issued Date: 07 April 2023

APPLIED TO: CH.02
CH.03
CH.04
CH.05
CH.17
AB.01A

MANUFACTURER: Camira
PATTERN NAME: Blazer
COLOR: Hull
PRODUCT ID: CUZ1P
WIDTH: 54"
CONTENT: 100% Pure New Wool
FINISH: None
BACKING: None
ABRASION: ≥75,000 double rubs
FLAMMABILITY: NFPA 260 - Class 1
CLEANING CODE: W/S



GENERAL NOTES:

1. Provide CFA prior to completing the order and shipping to manufacturer.
2. Furniture manufacturer to determine quantity required.

UPH-03

Project: Edmonds Library
Issued Date: 07 April 2023

APPLIED TO: WS.04
WS.05

MANUFACTURER: Camira
PATTERN NAME: Rivet
COLOR: Tensile
PRODUCT ID: EGL20
WIDTH: 54"
CONTENT: 100% Post-consumer recycled polyester
FINISH: None
BACKING: None
ABRASION: ≥50,000 double rubs
FLAMMABILITY: ASTM E84 - Class A
CLEANING CODE: W/S, Bleach Cleanable (4:1)



- GENERAL NOTES:**
- 1. Provide CFA prior to completing the order and shipping to manufacturer.
 - 2. Furniture manufacturer to determine quantity required.

UPH-04

Project: Edmonds Library
Issued Date: 07 April 2023

APPLIED TO: AB.02
AB.04

MANUFACTURER: Camira
PATTERN NAME: Silk
COLOR: Kingdom
PRODUCT ID: SLK10
WIDTH: 54"
CONTENT: 70% Pure New Wool, 19% Flax,
11% Silk

FINISH: None
BACKING: None
ABRASION: ≥100,000 double rubs
FLAMMABILITY: NFPA 260 - Class 1
CLEANING CODE: W/S



GENERAL NOTES:

- 1. Provide CFA prior to completing the order and shipping to manufacturer.
- 2. Furniture manufacturer to determine quantity required.

UPH-05

Project: Edmonds Library
Issued Date: 07 April 2023

APPLIED TO: CH.09

MANUFACTURER: Camira
PATTERN NAME: Blazer
COLOR: Holyoke
PRODUCT ID: CUZ2T
WIDTH: 54"
CONTENT: 100% Pure New Wool
FINISH: None
BACKING: None
ABRASION: ≥75,000 double rubs
FLAMMABILITY: NFPA 260 - Class 1
CLEANING CODE: W/S



-
- GENERAL NOTES:**
- 1. Provide CFA prior to completing the order and shipping to manufacturer.
 - 2. Furniture manufacturer to determine quantity required.

UPH-06

Project: Edmonds Library
Issued Date: 07 April 2023

APPLIED TO:	CH.10 T.10
MANUFACTURER:	Camira
PATTERN NAME:	Silk
COLOR:	Forbidden
PRODUCT ID:	SLK07
WIDTH:	54"
CONTENT:	70% Pure New Wool, 19% Flax, 11% Silk
FINISH:	None
BACKING:	None
ABRASION:	≥100,000 double rubs
FLAMMABILITY:	NFPA 260 - Class 1
CLEANING CODE:	W/S



GENERAL NOTES:

- 1. Provide CFA prior to completing the order and shipping to manufacturer.
- 2. Furniture manufacturer to determine quantity required.

UPH-07

Project: Edmonds Library
Issued Date: 07 April 2023

APPLIED TO: CH.08

MANUFACTURER: Camira
PATTERN NAME: Silk
COLOR: Forbidden
PRODUCT ID: SLK07
WIDTH: 54"
CONTENT: 70% Pure New Wool, 19% Flax,
11% Silk

FINISH: None
BACKING: None
ABRASION: ≥100,000 double rubs
FLAMMABILITY: NFPA 260 - Class 1
CLEANING CODE: W/S



-
- GENERAL NOTES:**
- 1. Provide CFA prior to completing the order and shipping to manufacturer.
 - 2. Furniture manufacturer to determine quantity required.

UPH-08

Project: Edmonds Library
Issued Date: 07 April 2023

APPLIED TO: CH.17
AB.01B
AB.03

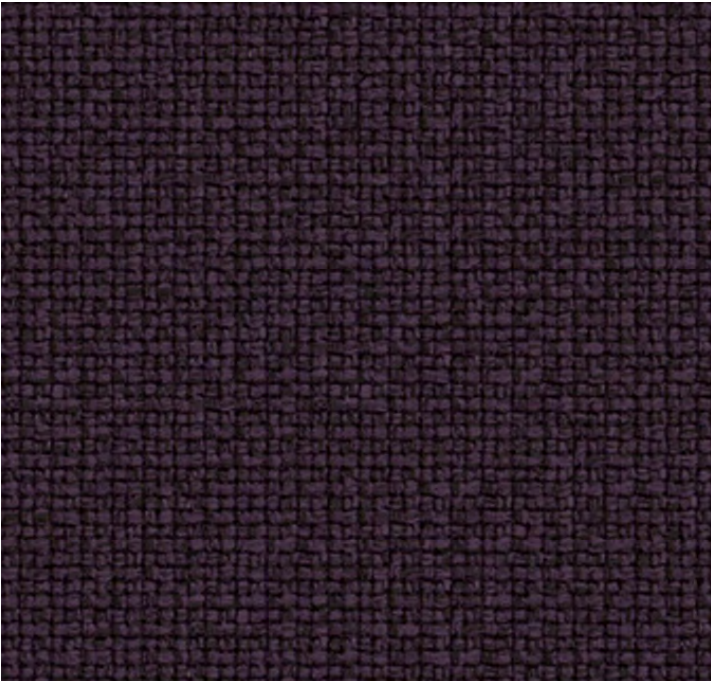
MANUFACTURER: Camira
PATTERN NAME: Main Line Flax
COLOR: Bayswater
PRODUCT ID: MLF24
WIDTH: 54"
CONTENT: 75% Pure New Wool, 25% Flax
FINISH: None
BACKING: None
ABRASION: ≥100,000 double rubs
FLAMMABILITY: NFPA 260 - Class 1
CLEANING CODE: W/S



GENERAL NOTES:

- 1. Provide CFA prior to completing the order and shipping to manufacturer.
- 2. Furniture manufacturer to determine quantity required.

APPLIED TO:	CH.12A
MANUFACTURER:	DesignTex
PATTERN NAME:	Wend
COLOR:	Eggplant
PRODUCT ID:	3169-602
WIDTH:	54"
CONTENT:	100% Post-consumer Recycled Polyester
FINISH:	Silicone
BACKING:	Fluid Barrier (Supreen™)
ABRASION:	≥100,000 double rubs
FLAMMABILITY:	NFPA 260 - Class 1
CLEANING CODE:	W/S, Bleach (10:1)

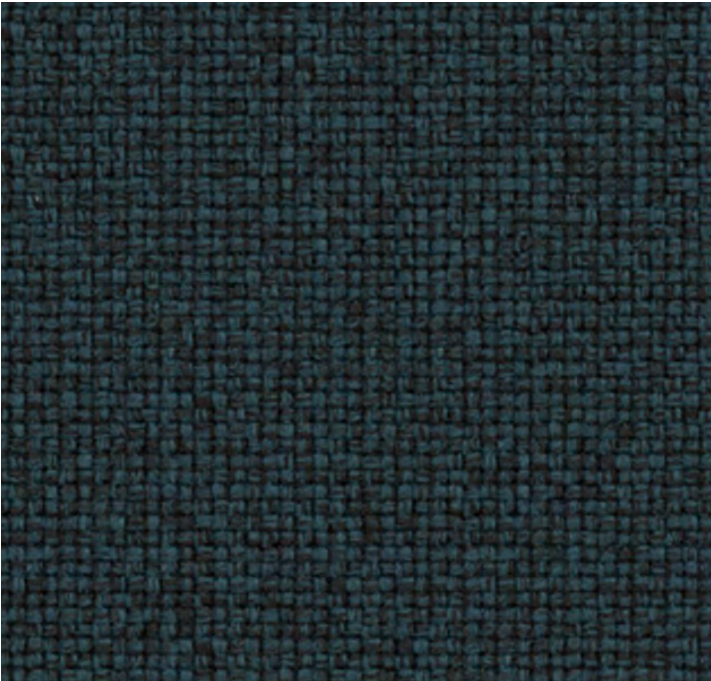


-
- GENERAL NOTES:**
- 1. Provide CFA prior to completing the order and shipping to manufacturer.
 - 2. Furniture manufacturer to determine quantity required.

UPH-10

Project: Edmonds Library
Issued Date: 07 April 2023

APPLIED TO:	CH.12C
MANUFACTURER:	DesignTex
PATTERN NAME:	Wend
COLOR:	Oceanside
PRODUCT ID:	3169-403
WIDTH:	54"
CONTENT:	100% Post-consumer Recycled Polyester
FINISH:	Silicone
BACKING:	Fluid Barrier (Supreen™)
ABRASION:	≥100,000 double rubs
FLAMMABILITY:	NFPA 260 - Class 1
CLEANING CODE:	W/S, Bleach (10:1)



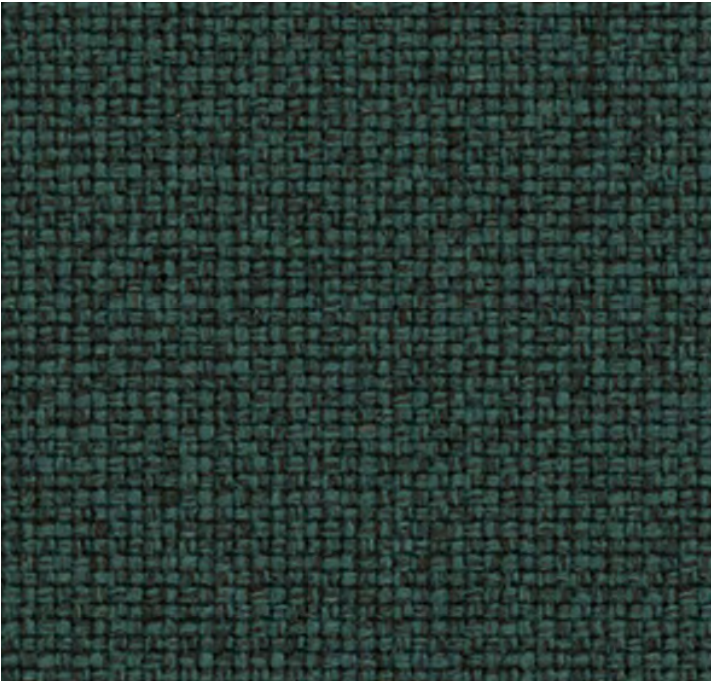
GENERAL NOTES:

- 1. Provide CFA prior to completing the order and shipping to manufacturer.
- 2. Furniture manufacturer to determine quantity required.

UPH-11

Project: Edmonds Library
Issued Date: 07 April 2023

APPLIED TO:	CH.11A
MANUFACTURER:	DesignTex
PATTERN NAME:	Wend
COLOR:	Canal
PRODUCT ID:	3169-402
WIDTH:	54"
CONTENT:	100% Post-consumer Recycled Polyester
FINISH:	Silicone
BACKING:	Fluid Barrier (Supreen™)
ABRASION:	≥100,000 double rubs
FLAMMABILITY:	NFPA 260 - Class 1
CLEANING CODE:	W/S, Bleach (10:1)



GENERAL NOTES:

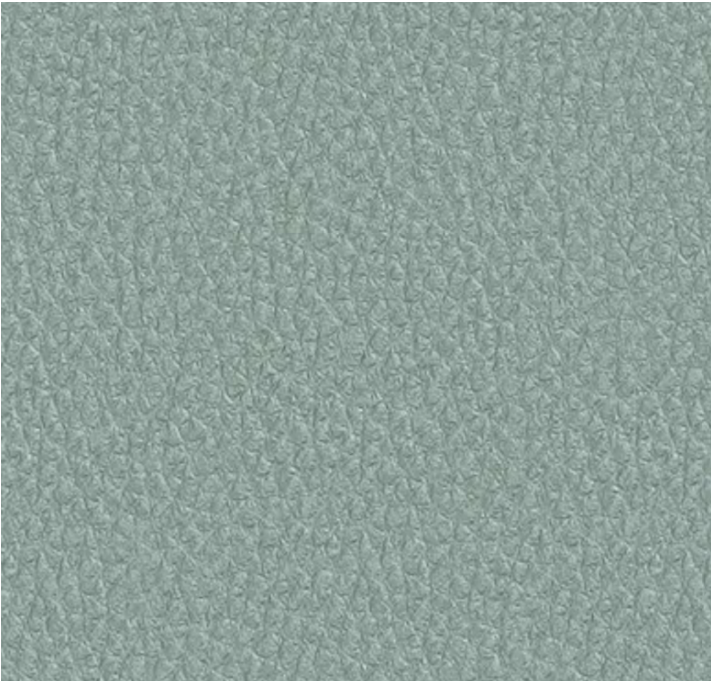
- 1. Provide CFA prior to completing the order and shipping to manufacturer.
- 2. Furniture manufacturer to determine quantity required.

UPH-12

Project: Edmonds Library
Issued Date: 07 April 2023

APPLIED TO: CH.12B
CH.12C

MANUFACTURER: DesignTex
PATTERN NAME: Rider
COLOR: Seacliff
PRODUCT ID: 3007-401
WIDTH: 54"
CONTENT: 100% Polyurethane
FINISH: Silicone
BACKING: Knit, Polyester
ABRASION: 300,000 double rubs
FLAMMABILITY: CA TB117-2013
CLEANING CODE: W/S, Bleach (4:1), Denim Dye
Resistant, Ink Resistant



- GENERAL NOTES:**
- 1. Provide CFA prior to completing the order and shipping to manufacturer.
 - 2. Furniture manufacturer to determine quantity required.

UPH-13

Project: Edmonds Library
Issued Date: 07 April 2023

APPLIED TO: CH.13B
CH.14B

MANUFACTURER: DesignTex
PATTERN NAME: Nook
COLOR: Leaf
PRODUCT ID: 3906-501
WIDTH: 54"
CONTENT: 100% Polyester
FINISH: Silicone
BACKING: Fluid Barrier (Supreen™)
ABRASION: 500,000 double rubs
FLAMMABILITY: CA TB117-2013
CLEANING CODE: W/S, Bleach (10:1)



GENERAL NOTES:

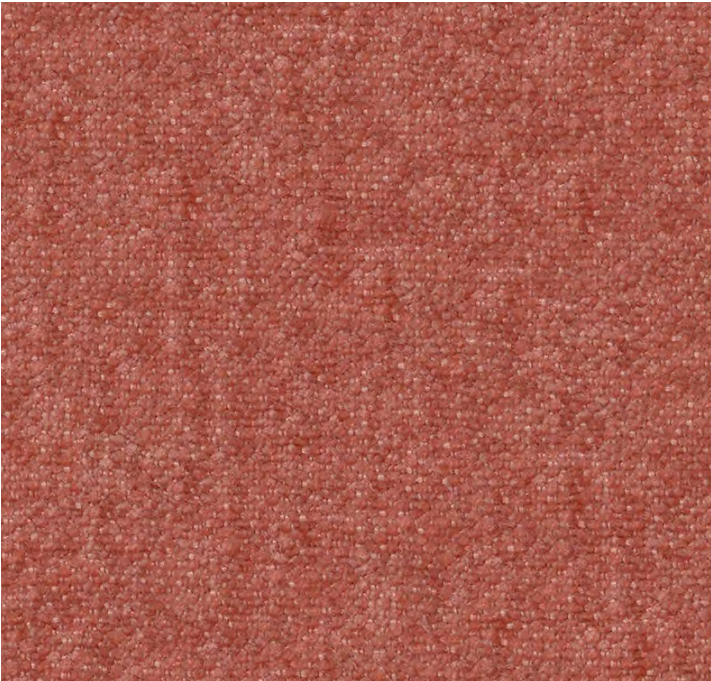
1. Provide CFA prior to completing the order and shipping to manufacturer.
2. Furniture manufacturer to determine quantity required.

UPH-14

Project: Edmonds Library
Issued Date: 07 April 2023

APPLIED TO: CH.13A
CH.14B

MANUFACTURER: DesignTex
PATTERN NAME: Nook
COLOR: Coral
PRODUCT ID: 3906-301
WIDTH: 54"
CONTENT: 100% Polyester
FINISH: Silicone
BACKING: Fluid Barrier (Supreen™)
ABRASION: 500,000 double rubs
FLAMMABILITY: CA TB117-2013
CLEANING CODE: W/S, Bleach (10:1)



-
- GENERAL NOTES:**
- 1. Provide CFA prior to completing the order and shipping to manufacturer.
 - 2. Furniture manufacturer to determine quantity required.

UPH-15

Project: Edmonds Library
Issued Date: 07 April 2023

APPLIED TO: T.07

MANUFACTURER: DesignTex
PATTERN NAME: Melange
COLOR: Moss
PRODUCT ID: 3492-503
WIDTH: 55"
CONTENT: 100% Polyester
FINISH: None
BACKING: None
ABRASION: ≥100,000 double rubs
FLAMMABILITY: ASTM E84 - Class A
CLEANING CODE: W/S

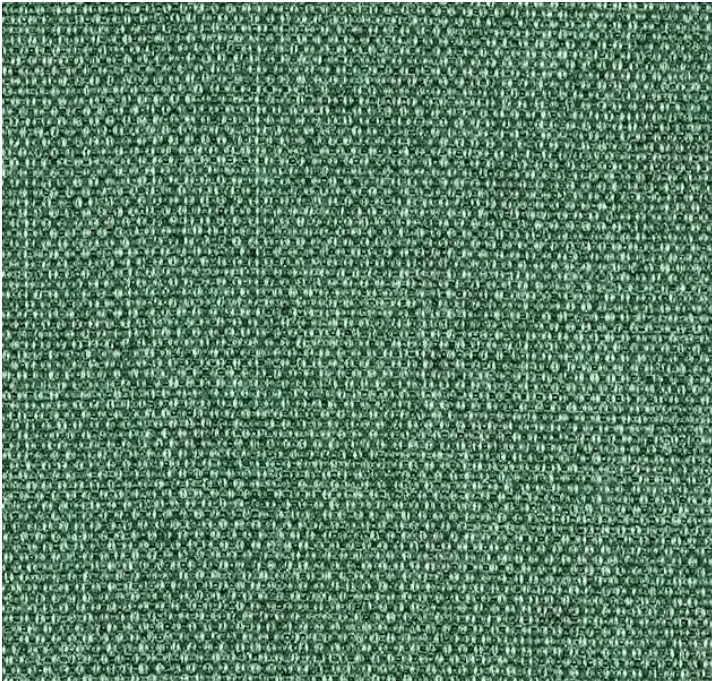


-
- GENERAL NOTES:**
- 1. Provide CFA prior to completing the order and shipping to manufacturer.
 - 2. Furniture manufacturer to determine quantity required.

UPH-16

Project: Edmonds Library
Issued Date: 07 April 2023

APPLIED TO:	T.09
MANUFACTURER:	DesignTex
PATTERN NAME:	Melange
COLOR:	Juniper
PRODUCT ID:	3492-507
WIDTH:	55"
CONTENT:	100% Polyester
FINISH:	None
BACKING:	None
ABRASION:	≥100,000 double rubs
FLAMMABILITY:	ASTM E84 - Class A
CLEANING CODE:	W/S



GENERAL NOTES:

- 1. Provide CFA prior to completing the order and shipping to manufacturer.
- 2. Furniture manufacturer to determine quantity required.

APPLIED TO: CH.11C

MANUFACTURER: DesignTex
PATTERN NAME: Beguiled By The Wild
COLOR: Tortoise
PRODUCT ID: 3043-502
WIDTH: 54"
CONTENT: 100% Polyurethane
FINISH: Silicone
BACKING: Knit, Polyester
ABRASION: $\geq 1,000,000$ double rubs
FLAMMABILITY: CA TB 117-2013
CLEANING CODE: W/S, Bleach Cleanable (4:1),
Denim Dye Resistant, Ink
Resistant



GENERAL NOTES:

1. Provide CFA prior to completing the order and shipping to manufacturer.
2. Furniture manufacturer to determine quantity required.

APPLIED TO:	CH.15 CH.16
MANUFACTURER:	DesignTex
PATTERN NAME:	Beguiled By The Wild
COLOR:	Orchid Mantis
PRODUCT ID:	3043-304
WIDTH:	54"
CONTENT:	100% Polyurethane
FINISH:	Silicone
BACKING:	Knit, Polyester
ABRASION:	≥1,000,000 double rubs
FLAMMABILITY:	CA TB 117-2013
CLEANING CODE:	W/S, Bleach Cleanable (4:1), Denim Dye Resistant, Ink Resistant



GENERAL NOTES:

- 1. Provide CFA prior to completing the order and shipping to manufacturer.
- 2. Furniture manufacturer to determine quantity required.

APPLIED TO:	<TAG>
MANUFACTURER:	DesignTex
PATTERN NAME:	Silicone Element
COLOR:	Petal
PRODUCT ID:	3919-306
WIDTH:	55"
CONTENT:	100% Silicone
FINISH:	Silicone
BACKING:	Knit, Polyester
ABRASION:	200,000 double rubs
FLAMMABILITY:	CA TB 117-2013
CLEANING CODE:	W/S, Bleach Cleanable (4:1), Denim Dye Resistant, Ink Resistant



- GENERAL NOTES:**
- 1. Provide CFA prior to completing the order and shipping to manufacturer.
 - 2. Furniture manufacturer to determine quantity required.

UPH-20

Project: Edmonds Library
Issued Date: 07 April 2023

APPLIED TO: CH.12D

MANUFACTURER: Momentum
PATTERN NAME: Plush Life
COLOR: Emerald
PRODUCT ID: 09544038
WIDTH: 55"
CONTENT: 100% Polyester
FINISH: PFAS-Free Stain Resistant
BACKING: Liquid Barrier (Supreen™)
ABRASION: 100,000 double rubs
FLAMMABILITY: CA TB 117-2013
CLEANING CODE: W/S, Bleach Cleanable (10:1)



GENERAL NOTES:

- 1. Provide CFA prior to completing the order and shipping to manufacturer.
- 2. Furniture manufacturer to determine quantity required.

UPH-21

Project: Edmonds Library
Issued Date: 07 April 2023

APPLIED TO:	CH.12D
MANUFACTURER:	Momentum
PATTERN NAME:	Plush Life
COLOR:	Aloe
PRODUCT ID:	09544027
WIDTH:	55"
CONTENT:	100% Polyester
FINISH:	PFAS-Free Stain Resistant
BACKING:	Liquid Barrier (Supreen™)
ABRASION:	100,000 double rubs
FLAMMABILITY:	CA TB 117-2013
CLEANING CODE:	W/S, Bleach Cleanable (10:1)



GENERAL NOTES:

- 1. Provide CFA prior to completing the order and shipping to manufacturer.
- 2. Furniture manufacturer to determine quantity required.

UPH-22

Project: Edmonds Library
Issued Date: 07 April 2023

APPLIED TO:	CH.11B
MANUFACTURER:	Architex
PATTERN NAME:	Cupertino
COLOR:	Valico
PRODUCT ID:	
WIDTH:	54"
CONTENT:	100% Silicone
FINISH:	None
BACKING:	Polyester
ABRASION:	200,000 double rubs
FLAMMABILITY:	CA TB 117-2013
CLEANING CODE:	W/S, Alcohol, Bleach Cleanable (4:1), Ink & Stain Resistant



GENERAL NOTES:

- 1. Provide CFA prior to completing the order and shipping to manufacturer.
- 2. Furniture manufacturer to determine quantity required.

TABLES & DESKS

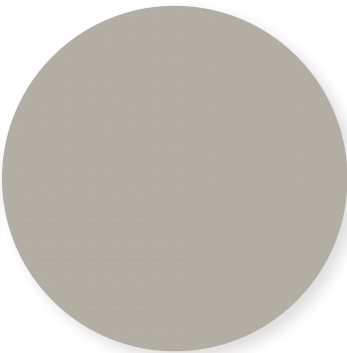


DESCRIPTION: Height-Adjustable work desk
QTY. & LOCATION: (2) Circulation Desk 107

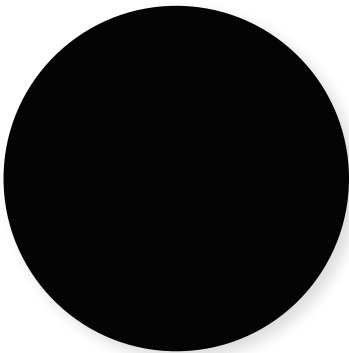
MANUFACTURER: Watson
PRODUCT: Essential Desk, Rectangle
PRODUCT ID: EL2RD3060 - PZ
DIMENSIONS: 30"D x 60"W
TOP HEIGHT: 27"-46.5"
TOP FINISH: FPE - Forbo Pebble
EDGE PROFILE: Knife
EDGE FINISH: ZE - Natural
LEG STYLE: PZ - Standard Range
LEG FINISH: BK - Black Powdercoat
SWITCH: Embedded Two-Button
OPTIONS:
1. Centered grommet
2. Personal pendant drawer, BK - black powdercoat.
3. Utility power strip
4. Universal E-chain



EDGE PROFILE & FINISH



TOP FINISH



LEG FINISH

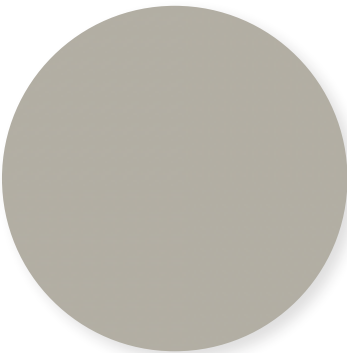
GENERAL NOTES:

1. Manufacturer to provide all required hardware and instructions for proper installation.
2. Unless otherwise noted, provide heavy-duty nylon furniture glides, diameter to be sized according to item's leg dimension (as large as possible) without being visible. Glide color to best match leg finish.
3. All images, photographs, and renderings of specified items in this package are for general design intent and reference only.

DESCRIPTION:	Height-Adjustable work desk
QTY. & LOCATION:	(8) Work Room 108 (1) Office 109 (1) Office 121
MANUFACTURER:	Watson
PRODUCT:	Essential Desk, Rectangle
PRODUCT ID:	EL2RD3060 - PZ
DIMENSIONS:	30"D x 60"W
TOP HEIGHT:	27"-46.5"
TOP FINISH:	FPE - Forbo Pebble
EDGE PROFILE:	K - Knife
EDGE FINISH:	ZE - Natural
LEG STYLE:	PZ - Standard Range
LEG FINISH:	FJ - Frosty White
SWITCH:	Embedded Two-Button
OPTIONS:	1. Centered grommet 2. Personal pendant drawer, BK - black powdercoat. 3. Utility power strip 4. Universal E-chain



EDGE PROFILE & FINISH



TOP FINISH



LEG FINISH

GENERAL NOTES:

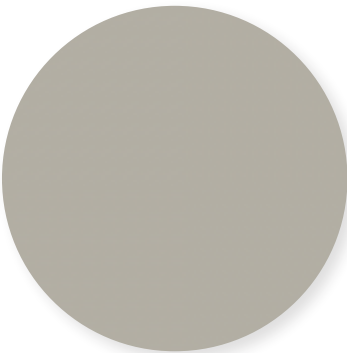
1. Manufacturer to provide all required hardware and instructions for proper installation.
2. Unless otherwise noted, provide heavy-duty nylon furniture glides, diameter to be sized according to item's leg dimension (as large as possible) without being visible. Glide color to best match leg finish.
3. All images, photographs, and renderings of specified items in this package are for general design intent and reference only.

DESCRIPTION: Height-Adjustable work desk
QTY. & LOCATION: (2) Work Room 108

MANUFACTURER: Watson
PRODUCT: Essential Desk, Rectangle
PRODUCT ID: EL2RD3054 - PZ
DIMENSIONS: 30"D x 54"W
TOP HEIGHT: 27"-46.5"
TOP FINISH: FPE - Forbo Pebble
EDGE PROFILE: K - Knife
EDGE FINISH: ZE - Natural
LEG STYLE: PZ - Standard Range
LEG FINISH: FJ - Frosty White
SWITCH: Embedded Two-Button
OPTIONS:
1. Centered grommet
2. Personal pendant drawer, BK - black powdercoat.
3. Utility power strip
4. Universal E-chain



EDGE PROFILE & FINISH



TOP FINISH



LEG FINISH

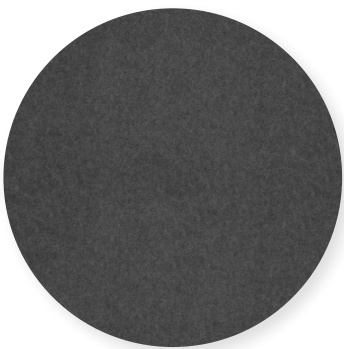
GENERAL NOTES:

1. Manufacturer to provide all required hardware and instructions for proper installation.
2. Unless otherwise noted, provide heavy-duty nylon furniture glides, diameter to be sized according to item's leg dimension (as large as possible) without being visible. Glide color to best match leg finish.
3. All images, photographs, and renderings of specified items in this package are for general design intent and reference only.

DESCRIPTION:	Height-adjustable benching
QTY. & LOCATION:	(6) Business Center 114 (1) Self-check @ Display Collection 114A
MANUFACTURER:	Watson
PRODUCT:	Seven Workbench with Talk Screen
PRODUCT ID:	S2XSREC6048
DIMENSIONS:	48"W x 60"D
TOP HEIGHT:	Adjustable, 27"- 46.5"
TOP FINISH:	FJ - Frosty White
EDGE:	K - Knife
EDGE FINISH:	ZE - Natural
LEG STYLE:	PZ - Standard Range
LEG FINISH:	BK - Black Powdercoat
SWITCH:	Embedded
SCREEN:	Seven Talk Screen, 52"H
SCREEN ID:	SXWST5248
SCREEN FINISH:	TEN - Tensile (Camira Rivet)
OPTIONS:	1. (10) Seven CPU Holders, WACHR 2. Include (6) Dual-sided Pin Aisle End Privacy Panels, 52"H x 60"W S2WESP5260



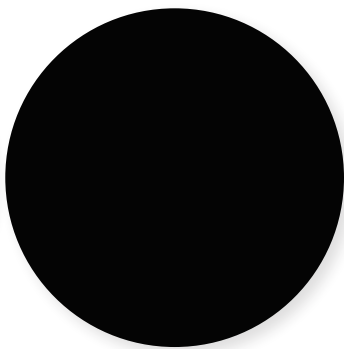
EDGE PROFILE & FINISH



SCREEN FINISH



TOP FINISH



LEG FINISH

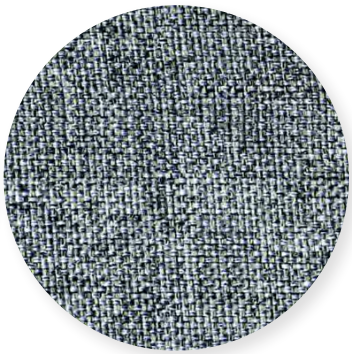
GENERAL NOTES:

1. Manufacturer to provide all required hardware and instructions for proper installation.
2. Unless otherwise noted, provide heavy-duty nylon furniture glides, diameter to be sized according to item's leg dimension (as large as possible) without being visible. Glide color to best match leg finish.
3. All images, photographs, and renderings of specified items in this package are for general design intent and reference only.

DESCRIPTION:	Acoustic Desk Booth
QTY. & LOCATION:	(6) Business Center 114
MANUFACTURER:	NaughtOne
PRODUCT:	Pullman Desk 1200
PRODUCT ID:	PULDH
DIMENSIONS:	51"W x 28"D x 51"H
TOP HEIGHT:	29.5"
TOP FINISH:	White MFMDf
EDGE:	Reverse chamfer, polished MDF
SURROUND FINISH:	UPH-03



TOP/EDGE



SURROUND

GENERAL NOTES:

1. Manufacturer to provide all required hardware and instructions for proper installation.
2. Unless otherwise noted, provide heavy-duty nylon furniture glides, diameter to be sized according to item's leg dimension (as large as possible) without being visible. Glide color to best match leg finish.
3. All images, photographs, and renderings of specified items in this package are for general design intent and reference only.

DESCRIPTION: Height-Adjustable work desk

QTY. & LOCATION: (2) Children's Area 115

MANUFACTURER: Watson

PRODUCT: Essential Desk, Rectangle

PRODUCT ID: EL2RD3048 - PZ

DIMENSIONS: 30"D x 48"W

TOP HEIGHT: 27"-46.5"

TOP FINISH: FPE - Forbo Pebble

EDGE PROFILE: K - Knife

EDGE FINISH: ZE - Natural

LEG STYLE: PZ - Standard Range

LEG FINISH: FJ - Frosty White

SWITCH: Embedded Two-Button

OPTIONS:

1. Centered grommet

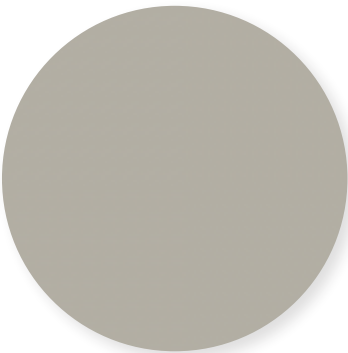
2. Personal pendant drawer, BK - black powdercoat.

3. Utility power strip

4. Universal E-chain



EDGE PROFILE & FINISH



TOP FINISH



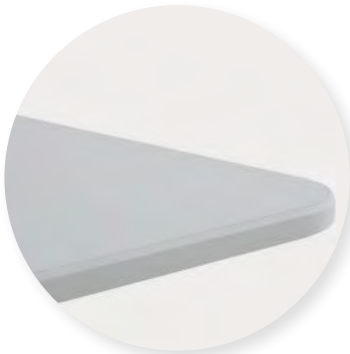
LEG FINISH

- GENERAL NOTES:
1. Manufacturer to provide all required hardware and instructions for proper installation.

2. Unless otherwise noted, provide heavy-duty nylon furniture glides, diameter to be sized according to item's leg dimension (as large as possible) without being visible. Glide color to best match leg finish.

3. All images, photographs, and renderings of specified items in this package are for general design intent and reference only.

DESCRIPTION:	General use tables
QTY. & LOCATION:	(4) Staff Lounge 112 (6) Teen/Juvenile 114C (3) Flex Lounge 114H (2) Reading Area 114F (1) Reading Area 114E
MANUFACTURER:	Coalesse
PRODUCT:	Lagunitas Work Tables
PRODUCT ID:	COLAGTW
DIMENSIONS:	24"D x 36"W x 28-1/2"H
TOP FINISH:	2730 Arctic White
EDGE:	3mm edge
EDGE FINISH:	6009 Arctic White
LEG STYLE:	Base with column
LEG FINISH:	4180 Graphite Matte



EDGE



TOP FINISH



LEG FINISH

GENERAL NOTES:

1. Manufacturer to provide all required hardware and instructions for proper installation.
2. Unless otherwise noted, provide heavy-duty nylon furniture glides, diameter to be sized according to item's leg dimension (as large as possible) without being visible. Glide color to best match leg finish.
3. All images, photographs, and renderings of specified items in this package are for general design intent and reference only.

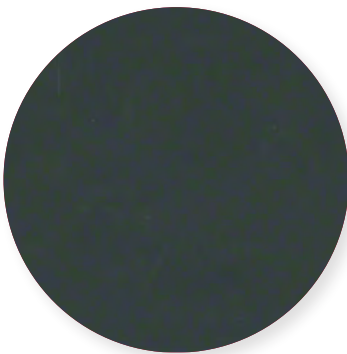
DESCRIPTION:	General use tables
QTY. & LOCATION:	(2) Staff Focus Room 119
MANUFACTURER:	Coalesse
PRODUCT:	Lagunitas Work Tables
PRODUCT ID:	COLAGTW
DIMENSIONS:	40"D x 36"W x 28-1/2"H
TOP FINISH:	2730 Arctic White
EDGE:	3mm edge
EDGE FINISH:	6009 Arctic White
LEG STYLE:	Base with column
LEG FINISH:	4180 Graphite Matte



EDGE



TOP FINISH



LEG FINISH

GENERAL NOTES:

1. Manufacturer to provide all required hardware and instructions for proper installation.
2. Unless otherwise noted, provide heavy-duty nylon furniture glides, diameter to be sized according to item's leg dimension (as large as possible) without being visible. Glide color to best match leg finish.
3. All images, photographs, and renderings of specified items in this package are for general design intent and reference only.

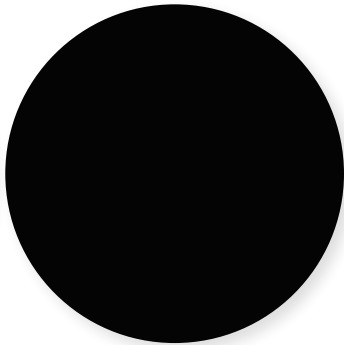
DESCRIPTION:	Training tables
QTY. & LOCATION:	(8) Large Meeting Room 120
MANUFACTURER:	Watson
PRODUCT:	Seven Flip Table, rectangle
PRODUCT ID:	SMFREF2472
DIMENSIONS:	24"D x 72"W
TOP HEIGHT:	29"
TOP FINISH:	FJ - Frosty White
EDGE PROFILE:	K - Knife
EDGE FINISH:	ZE - Natural
LEG STYLE:	Flip-up Full Base with Casters
LEG FINISH:	BK - Black Powdercoat
OPTIONS:	1. Power access cutout with Byrne Nacre-4 power module.



EDGE PROFILE & FINISH



TOP FINISH



LEG FINISH

GENERAL NOTES:

1. Manufacturer to provide all required hardware and instructions for proper installation.
2. Unless otherwise noted, provide heavy-duty nylon furniture glides, diameter to be sized according to item's leg dimension (as large as possible) without being visible. Glide color to best match leg finish.
3. All images, photographs, and renderings of specified items in this package are for general design intent and reference only.

DESCRIPTION:	Height-adjustable laptop table
QTY. & LOCATION:	(2) Teen/Juvenile 114C (3) Reading Room 114F (3) Reading Room 114G (4) Large Meeting Room 120 (1) Quiet Room 110 (1) Work Room 108 (1) Office 109 (1) Phone Room 113
MANUFACTURER:	Hightower
PRODUCT:	Kona Laptop Tables - Adjustable Height
PRODUCT ID:	HTKNLT200
DIMENSIONS:	21"W x 14"D
TOP HEIGHT:	19.75" - 30.75"
BASE FINISH:	Black powdercoat
TOP FINISH:	Ash



TOP FINISH

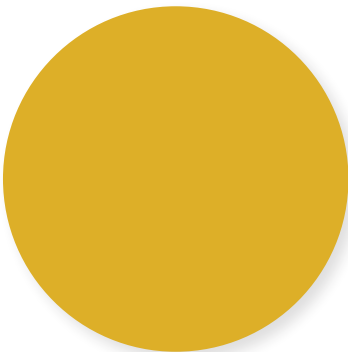


BASE FINISH

GENERAL NOTES:

1. Manufacturer to provide all required hardware and instructions for proper installation.
2. Unless otherwise noted, provide heavy-duty nylon furniture glides, diameter to be sized according to item's leg dimension (as large as possible) without being visible. Glide color to best match leg finish.
3. All images, photographs, and renderings of specified items in this package are for general design intent and reference only.

DESCRIPTION:	Oval Coffee Table
QTY. & LOCATION:	(1) Flex Lounge 114H (1) Reading Area 114E
MANUFACTURER:	NaughtOne
PRODUCT:	Tun 920 Coffee Table
PRODUCT ID:	GZ1545
DIMENSIONS:	36"W x 22"D x 14"H
TOP HEIGHT:	14"
BASE:	Steel Base, RAL Powder coat
BASE FINISH:	RAL1012 Lemon Yellow
EDGE:	Reverse chamfer, polished MDF
TOP:	Wood
TOP FINISH:	Oak Veneer



BASE FINISH



TOP FINISH

GENERAL NOTES:

- 1. Manufacturer to provide all required hardware and instructions for proper installation.
- 2. Unless otherwise noted, provide heavy-duty nylon furniture glides, diameter to be sized according to item's leg dimension (as large as possible) without being visible. Glide color to best match leg finish.
- 3. All images, photographs, and renderings of specified items in this package are for general design intent and reference only.

DESCRIPTION:	Dual-height work table
QTY. & LOCATION:	(1) Reading Area 114G
MANUFACTURER:	Bernhardt
PRODUCT:	Blueprint 42"h Block Stepped Table (Starter table + end run table)
PRODUCT ID:	BPS-NGA-CCSQ BPS-JGA-TCSQ
DIMENSIONS:	72"W x 36"D x 42"H 72"W x 36"D x 30"H
TOP HEIGHT:	42" and 30"
BASE:	Block
BASE MATERIAL:	OAK - Oak
BASE FINISH:	M71 Blonde
TOP MATERIAL:	OAK - Oak
TOP FINISH:	M71 Blonde
POWER OPTIONS:	1. Z01 Surface-mount power module at each table 2. Include wire management snake



WOOD FINISH

- GENERAL NOTES:**
- 1. Manufacturer to provide all required hardware and instructions for proper installation.
 - 2. Unless otherwise noted, provide heavy-duty nylon furniture glides, diameter to be sized according to item's leg dimension (as large as possible) without being visible. Glide color to best match leg finish.
 - 3. All images, photographs, and renderings of specified items in this package are for general design intent and reference only.

DESCRIPTION: Bar Height Picnic Table
 QTY. & LOCATION: (1) Teen/Juvenile 114C

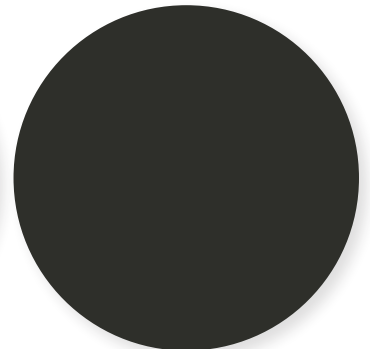
MANUFACTURER: Hightower
 PRODUCT: Picnic, Large - Cafe Height
 PRODUCT ID: GZPCBE20
 DIMENSIONS: 70.9"Ø overall, 37.8"Ø table
 TOP HEIGHT: 28.3"
 SEAT HEIGHT: 18.9"
 TOP FINISH: Clear Lacquered Oak
 BASE FINISH: Powdercoat, Black
 SEAT FINISH: UPH-15



UPHOLSTERY



TOP FINISH

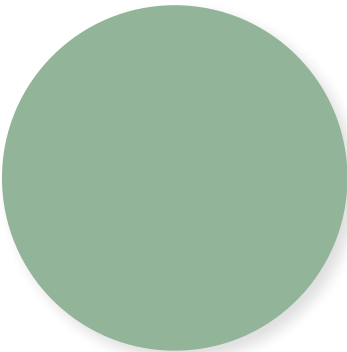


BASE FINISH

GENERAL NOTES:

1. Manufacturer to provide all required hardware and instructions for proper installation.
2. Unless otherwise noted, provide heavy-duty nylon furniture glides, diameter to be sized according to item's leg dimension (as large as possible) without being visible. Glide color to best match leg finish.
3. All images, photographs, and renderings of specified items in this package are for general design intent and reference only.

DESCRIPTION:	Powered side table
QTY. & LOCATION:	(2) Teen/Juvenile 114C
MANUFACTURER:	Hightower
PRODUCT:	Phase Cork Side Table
PRODUCT ID:	PH100
DIMENSIONS:	17.5"H x 13"Ø
TOP HEIGHT:	17.5"
POWER FACE PLATE FINISH:	Aloe
POWER CORD FINISH:	Ivory



POWER PLATE FINISH



FINISH

GENERAL NOTES:

1. Manufacturer to provide all required hardware and instructions for proper installation.
2. Unless otherwise noted, provide heavy-duty nylon furniture glides, diameter to be sized according to item's leg dimension (as large as possible) without being visible. Glide color to best match leg finish.
3. All images, photographs, and renderings of specified items in this package are for general design intent and reference only.

DESCRIPTION:	Coffee Table
QTY. & LOCATION:	(1) Teen/Juvenile 114C
MANUFACTURER:	Hightower
PRODUCT:	Breck Table - Large
PRODUCT ID:	BR3300
DIMENSIONS:	27.5"Ø x 16"H
TOP HEIGHT:	16"
BASE FINISH:	UPH-16
TOP FINISH:	Ash Veneer



TOP FINISH



BASE FINISH

GENERAL NOTES:

1. Manufacturer to provide all required hardware and instructions for proper installation.
2. Unless otherwise noted, provide heavy-duty nylon furniture glides, diameter to be sized according to item's leg dimension (as large as possible) without being visible. Glide color to best match leg finish.
3. All images, photographs, and renderings of specified items in this package are for general design intent and reference only.

DESCRIPTION:	Side Table
QTY. & LOCATION:	(2) Children's Area 115
MANUFACTURER:	Hightower
PRODUCT:	Breck Table - Small
PRODUCT ID:	BR3400
DIMENSIONS:	19.5"Ø x 16"H
TOP HEIGHT:	16"
BASE FINISH:	UPH-06
TOP FINISH:	Ash Veneer



TOP FINISH



BASE FINISH

GENERAL NOTES:

- 1. Manufacturer to provide all required hardware and instructions for proper installation.
- 2. Unless otherwise noted, provide heavy-duty nylon furniture glides, diameter to be sized according to item's leg dimension (as large as possible) without being visible. Glide color to best match leg finish.
- 3. All images, photographs, and renderings of specified items in this package are for general design intent and reference only.

DESCRIPTION: Multi-purpose whiteboard table
QTY. & LOCATION: (3) Children's Area 115

MANUFACTURER: Watson
PRODUCT: Tonic Simple Rectangle
PRODUCT ID: TWTRE3648'
DIMENSIONS: 36D x 48W x 22H'
TOP FINISH: White Markerboard
EDGE: J - Knife Trim
EDGE FINISH: Frosty White
LEG STYLE: Inset A-Line Legs
LEG FINISH: PIG - Emerald Green
POWER OPTIONS: N/A

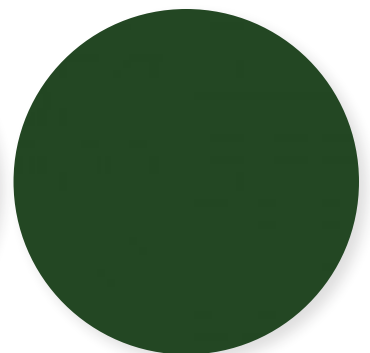
NOTES:
 1. Product ID is based on table top size; base height is to be custom-sized for children. Finished Top surface to be at 22"



EDGE PROFILE & FINISH



TOP FINISH

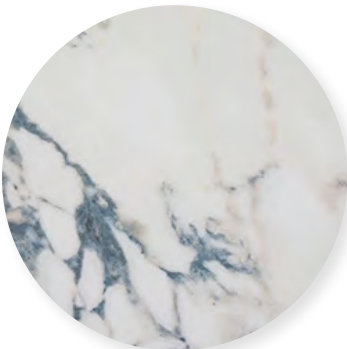


LEG FINISH

GENERAL NOTES:

1. Manufacturer to provide all required hardware and instructions for proper installation.
2. Unless otherwise noted, provide heavy-duty nylon furniture glides, diameter to be sized according to item's leg dimension (as large as possible) without being visible. Glide color to best match leg finish.
3. All images, photographs, and renderings of specified items in this package are for general design intent and reference only.

DESCRIPTION:	Outdoor side table
QTY. & LOCATION:	(1) Patio 122
MANUFACTURER:	Coalesse
PRODUCT:	Emu Terramare - Small Coffee Table
PRODUCT ID:	COEM4735
DIMENSIONS:	19"W x 19"D x 15.75"H
TOP HEIGHT:	15.75"H
TOP FINISH:	ST02 Statuario White
FRAME:	Powdercoated aluminum
FRAME FINISH:	7234 EMU Black



TOP FINISH



LEG FINISH

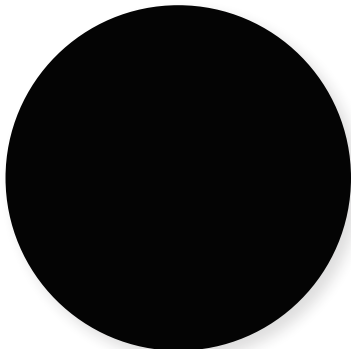
GENERAL NOTES:

- 1. Manufacturer to provide all required hardware and instructions for proper installation.
- 2. Unless otherwise noted, provide heavy-duty nylon furniture glides, diameter to be sized according to item's leg dimension (as large as possible) without being visible. Glide color to best match leg finish.
- 3. All images, photographs, and renderings of specified items in this package are for general design intent and reference only.

STORAGE



DESCRIPTION:	Mobile Pedestal
QTY. & LOCATION:	(2) Circulation Desk 107
MANUFACTURER:	Watson
PRODUCT:	Zo Ped - Pencil/Box/File Mobile
PRODUCT ID:	ZSPEPBF241526M
DIMENSIONS:	24"D x 15"W x 26"H
PULL:	B - Bar (Silver)
STORAGE FINISH:	BK - Black
FACE FINISH:	BK - Black
OPTIONS:	Factory-installed lock core



FINISH

- GENERAL NOTES:**
1. Manufacturer to provide all required hardware and instructions for proper installation.
 2. Unless otherwise noted, provide heavy-duty nylon furniture glides, diameter to be sized according to item's leg dimension (as large as possible) without being visible. Glide color to best match leg finish.
 3. All images, photographs, and renderings of specified items in this package are for general design intent and reference only.

DESCRIPTION:	Mobile Pedestal
QTY. & LOCATION:	(1) Office 109 (1) Office 121 (10) Work Room 108
MANUFACTURER:	Watson
PRODUCT:	Zo Ped - Pencil/Box/File Mobile
PRODUCT ID:	ZSPEPBF241526M
DIMENSIONS:	24"D x 15"W x 26"H
PULL:	B - Bar (Silver)
STORAGE FINISH:	FJ - Frosty White
FACE FINISH:	FJ - Frosty White
OPTIONS:	Factory-installed lock core

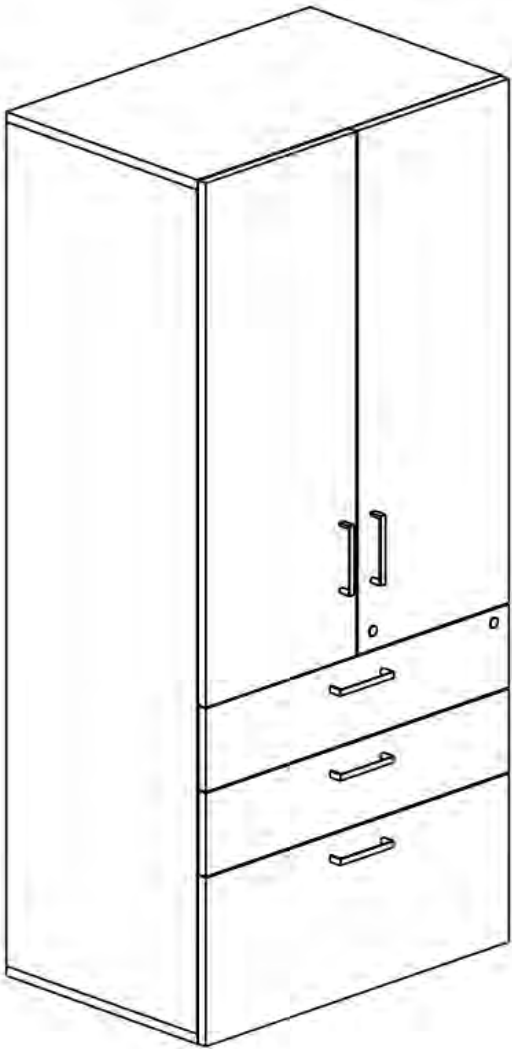


FINISH

GENERAL NOTES:

1. Manufacturer to provide all required hardware and instructions for proper installation.
2. Unless otherwise noted, provide heavy-duty nylon furniture glides, diameter to be sized according to item's leg dimension (as large as possible) without being visible. Glide color to best match leg finish.
3. All images, photographs, and renderings of specified items in this package are for general design intent and reference only.

DESCRIPTION:	Storage cabinet
QTY. & LOCATION:	(2) Office 109 (2) Office 121 (3) Work Room 108 (2) Children's Area 115
MANUFACTURER:	Watson
PRODUCT:	Zo Sto Combo Door - Adjustable Shelves
PRODUCT ID:	ZSBKCDA203078
DIMENSIONS:	20"D x 30"W x 78"H
PULL:	B - Bar (Silver)
STORAGE FINISH:	FJ - Frosty White
FACE FINISH:	FJ - Frosty White
OPTIONS:	Factory-installed lock core



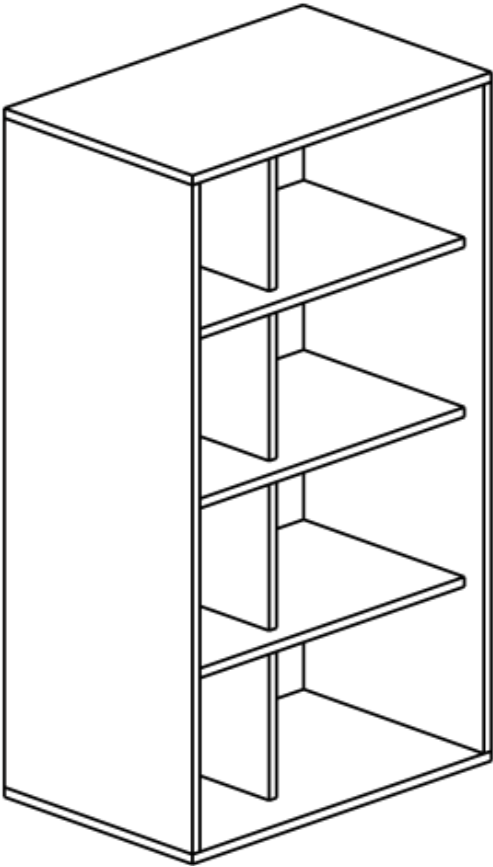
FINISH

GENERAL NOTES:

1. Manufacturer to provide all required hardware and instructions for proper installation.
2. Unless otherwise noted, provide heavy-duty nylon furniture glides, diameter to be sized according to item's leg dimension (as large as possible) without being visible. Glide color to best match leg finish.
3. All images, photographs, and renderings of specified items in this package are for general design intent and reference only.

DESCRIPTION: Discard shelves
QTY. & LOCATION: (2) Work Room 108

MANUFACTURER: Watson
PRODUCT: Zo Sto Open - Center Divider, Adjustable Shelves
PRODUCT ID: ZSBKOA153678
DIMENSIONS: 15"D x 36"W x 78"H
STORAGE FINISH: FJ - Frosty White
FACE FINISH: FJ - Frosty White



FINISH

GENERAL NOTES:

- 1. Manufacturer to provide all required hardware and instructions for proper installation.
- 2. Unless otherwise noted, provide heavy-duty nylon furniture glides, diameter to be sized according to item's leg dimension (as large as possible) without being visible. Glide color to best match leg finish.
- 3. All images, photographs, and renderings of specified items in this package are for general design intent and reference only.



MISCELLANEOUS

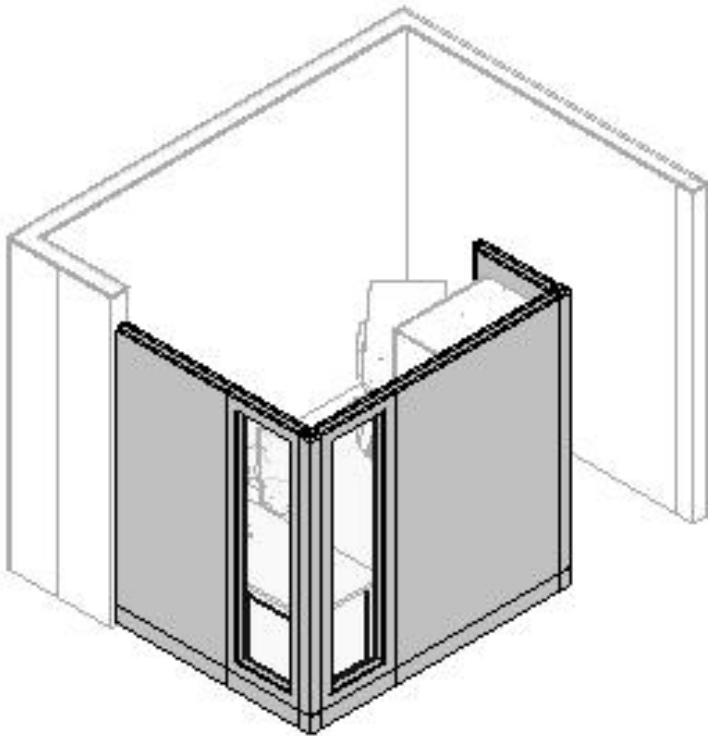
DESCRIPTION: Systems furniture office
QTY. & LOCATION: (1) Work Room 108

MANUFACTURER: KI
PRODUCT: Wireworks Panel System
- Monolithic Tackable Fabric Panels (PMMA)
- Monolithic Glass Panel (PG)

PRODUCT ID & DIMENSIONS: PMMA2484 - 24"W x 84"H
PMMA3684 - 36"W x 84"H
PMMA5484 - 54"W x 84"H
PG2484 - 24"W x 84"H

TRIM COLOR: SX - Starlight Silver Metallic
FABRIC SIDE 1: E2MO - MOSS
FABRIC SIDE 2: E2MO - MOSS
GLAZING: GLA - Clear

NOTES: Coordinate with furniture rep. all required parts and pieces for configuration shown in furniture plans including corner posts. Product IDs given are for base design; evaluate for power distribution, connection points, and installation.



TRIM



FABRIC

- GENERAL NOTES:**
- 1. Manufacturer to provide all required hardware and instructions for proper installation.
 - 2. Unless otherwise noted, provide heavy-duty nylon furniture glides, diameter to be sized according to item's leg dimension (as large as possible) without being visible. Glide color to best match leg finish.
 - 3. All images, photographs, and renderings of specified items in this package are for general design intent and reference only.

DESCRIPTION: Trash/Recycle/Compost
QTY. & LOCATION: (1) Display Collection 114A
 (1) Teen/Juvenile 114C
 (1) Reading Area 114F
 (1) Reading Area 114G
 (1) Children's Area 115

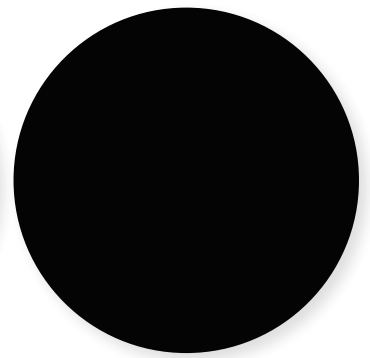
MANUFACTURER: Watson
PRODUCT: Bahn Recycle Center
PRODUCT ID: BSSN126036
DIMENSIONS: 12"D x X"W x 36"H
PULL: B - Bar (Silver)
EDGE: 90 Trim
EDGE FINISH: FJ - Frosty White
TOP FINISH: FJ - Frosty White
STORAGE FINISH: FJ - Frosty White
DOOR FINISH: FJ - Frosty White
LEG FINISH: BK - Black Powdercoat



EDGE PROFILE & FINISH



GENERAL FINISH



LEG FINISH

GENERAL NOTES:

1. Manufacturer to provide all required hardware and instructions for proper installation.
2. Unless otherwise noted, provide heavy-duty nylon furniture glides, diameter to be sized according to item's leg dimension (as large as possible) without being visible. Glide color to best match leg finish.
3. All images, photographs, and renderings of specified items in this package are for general design intent and reference only.

EQ.01

Project: Edmonds Library
Issued Date: 07 April 2023

DESCRIPTION: Book returns cart
QTY. & LOCATION: (2) Circulation Desk 107

MANUFACTURER: Kingsley
PRODUCT: 44 DuraLight Under Counter
PRODUCT ID: 30-9044
DIMENSIONS: 25-7/16"W x 28-5/8"D x 25-1/2"H



GENERAL NOTES:

1. Manufacturer to provide all required hardware and instructions for proper installation.
2. Unless otherwise noted, provide heavy-duty nylon furniture glides, diameter to be sized according to item's leg dimension (as large as possible) without being visible. Glide color to best match leg finish.
3. All images, photographs, and renderings of specified items in this package are for general design intent and reference only.

DESCRIPTION:	Children’s Book Bins
QTY. & LOCATION:	(3) Children’s Area 115
MANUFACTURER:	TMC
PRODUCT:	Linear Book Bin
PRODUCT ID:	MBLC30322625-XX-02
DIMENSIONS:	30”W x 32.75”D x 26”TH/OH
FINISH:	117 Chalk White
OPTIONS:	3” diameter locking casters No CutOut



FINISH

GENERAL NOTES:

- 1. Manufacturer to provide all required hardware and instructions for proper installation.
- 2. Unless otherwise noted, provide heavy-duty nylon furniture glides, diameter to be sized according to item’s leg dimension (as large as possible) without being visible. Glide color to best match leg finish.
- 3. All images, photographs, and renderings of specified items in this package are for general design intent and reference only.

DESCRIPTION:	Art display stands
QTY. & LOCATION:	(5) Art Walk 107B
MANUFACTURER:	ShopPop Displays
PRODUCT:	White Laminate Pedestal
PRODUCT ID:	P_PED-WOODL-MW-FLAT
DIMENSIONS:	15"W x 15"D
HEIGHTS & QUANTITY:	(1) @ 24"H (3) @ 30"H (1) @ 36"H
FINISH:	White



GENERAL NOTES:

- 1. Manufacturer to provide all required hardware and instructions for proper installation.
- 2. Unless otherwise noted, provide heavy-duty nylon furniture glides, diameter to be sized according to item's leg dimension (as large as possible) without being visible. Glide color to best match leg finish.
- 3. All images, photographs, and renderings of specified items in this package are for general design intent and reference only.

Rep Contact Information

Andreu World

Victoria Steidler | 612.384.7424
victoria@howardroarkassociates.com

Bernhardt Designs

Jenn Hubbell | 206.765.9096
jenn@concentricspaces.com

Coalesse

Kristen Naranjo | 206.992.9291
kristen.naranjo@steelcase.com

Herman Miller

Matt Grynol | 512.518.1515
matt_grynol@hermanmiller.com

Hightower

Todd Johnson | 206.650.0538
todd@mattercontract.com

Keilhauer

Esther Du Graf | 206.281.9366
esther@dugraf.com

KI

Dawn Viar | 503.724.2641
dawn@orange-thread.com

Kimball Office

Theresa Comer | 425.761.2065
theresa.comer@kimball.com

Kingsley

800-376-7209 | sales@kingsley.com

Leland

Jordan Gates | 206.617.7049
jordan@absolute-resource.com

NaughtOne

Jordan Gates | 206.617.7049
jordan@absolute-resource.com

shopPOP Displays

Stephanie Gray | 1.800.631.3690 x202
stephanie.gray@shopPOPdisplays.com

TMC

Christina Kirwin | 734.622.0084
christina@tmc furniture.com

Watson

Andrew Wesner | 206.729.7800
andrew@kayserwesner.com

APPENDIX

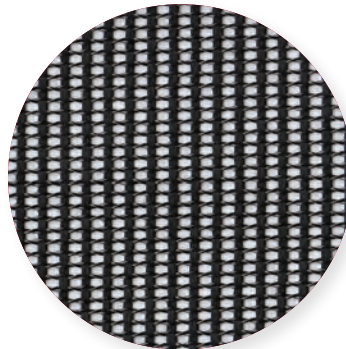
Alternate for CH.01A & CH.01B

- ALT.01 98

Alternate for CH.06

- ALT.02 99

DESCRIPTION:	Employee Task Chair
QTY. & LOCATION:	(10) Work Room 108 (3) Circulation Desk 107 (1) Office 109 (1) Office 121
MANUFACTURER:	9 to 5 Seating
PRODUCT:	Theory All Mesh Mid-back
PRODUCT ID:	2170-Y1-A37-M11-BA11B-C7-SS
DIMENSIONS:	26.5"W x 25"D x 37.5-45"H
SEAT HEIGHT:	16.5"-21.5"
CONTROL:	Y1 - Simple Synchro
ARM STYLE:	A37 - Height/Width Adjustable Pivot/Slid Arm
BASE:	BA11B - 26" High Profile Nylon Base, Black
SEAT & BACK:	M1 Mesh
MESH COLOR:	M11 Black
CASTERS:	C7 - Chrome-Accented Hard Floor and Carpet Casters
OPTIONS:	SS - Seat Slider



SEAT/BACK FINISH



FRAME/CHASSIS/BASE
FINISH

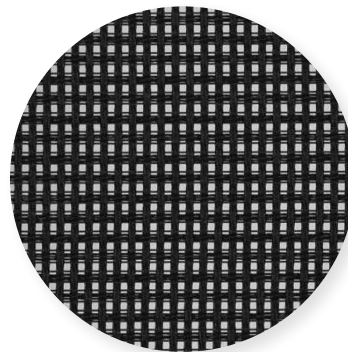
GENERAL NOTES:

1. Manufacturer to provide all required hardware and instructions for proper installation.
2. Unless otherwise noted, provide heavy-duty nylon furniture glides, diameter to be sized according to item's leg dimension (as large as possible) without being visible. Glide color to best match leg finish.
3. All images, photographs, and renderings of specified items in this package are for general design intent and reference only.

DESCRIPTION: Stackable side chairs
 QTY. & LOCATION: (70) Large Meeting Room 120

MANUFACTURER: Kimball Office
 PRODUCT: Poly Mesh Stacking Chair
 PRODUCT ID: K95M-BK-PQ25-99
 DIMENSIONS: 32"H x 20"W x 24.125"W
 SEAT HEIGHT: 18"
 BASE: Sled
 BASE FINISH: Chrome
 GLIDES: Black Plastic
 BACK: Mesh
 BACK FINISH: BK - Black Tie
 SEAT: Mesh
 SEAT FINISH: BK - Black Tie
 STORAGE: (2) Transport Dolly
 - Model: K95TD
 - 13-3/8"H x 22-5/8"W x 32"D

STACKING: Maximum stack = 35 chairs on dolly



SEAT & BACK



BASE FINISH

GENERAL NOTES:

1. Manufacturer to provide all required hardware and instructions for proper installation.
2. Unless otherwise noted, provide heavy-duty nylon furniture glides, diameter to be sized according to item's leg dimension (as large as possible) without being visible. Glide color to best match leg finish.
3. All images, photographs, and renderings of specified items in this package are for general design intent and reference only.