



Johnston Architects, LLC
 100 NE Northlake Way,
 Suite 200
 Seattle, WA 98105
 t 206.523.6150
 f 206.523.9382

SÄZAN
 GROUP

600 Stewart St., Ste 1400
 Seattle, Washington 98101

Tel 206.267.1700
 Fax 206.267.1701
 SAZAN # 911-23005

SNO-ISLE EDMONDS
LIBRARY

650 MAIN STREET
 EDMONDS, WA 98020

| DRAWING ISSUE | |
|---------------|---------------|
| DATE | DESCRIPTION |
| 3/31/2023 | ISSUE FOR BID |
| 4/19/2023 | ADDENDUM #2 |

SHEET TITLE
COMMUNICATIONS PLAN

SHEET NO.
T3.00

Drawn NH
 Checked JTB

© 2023 JOHNSTON ARCHITECTS

LEGEND

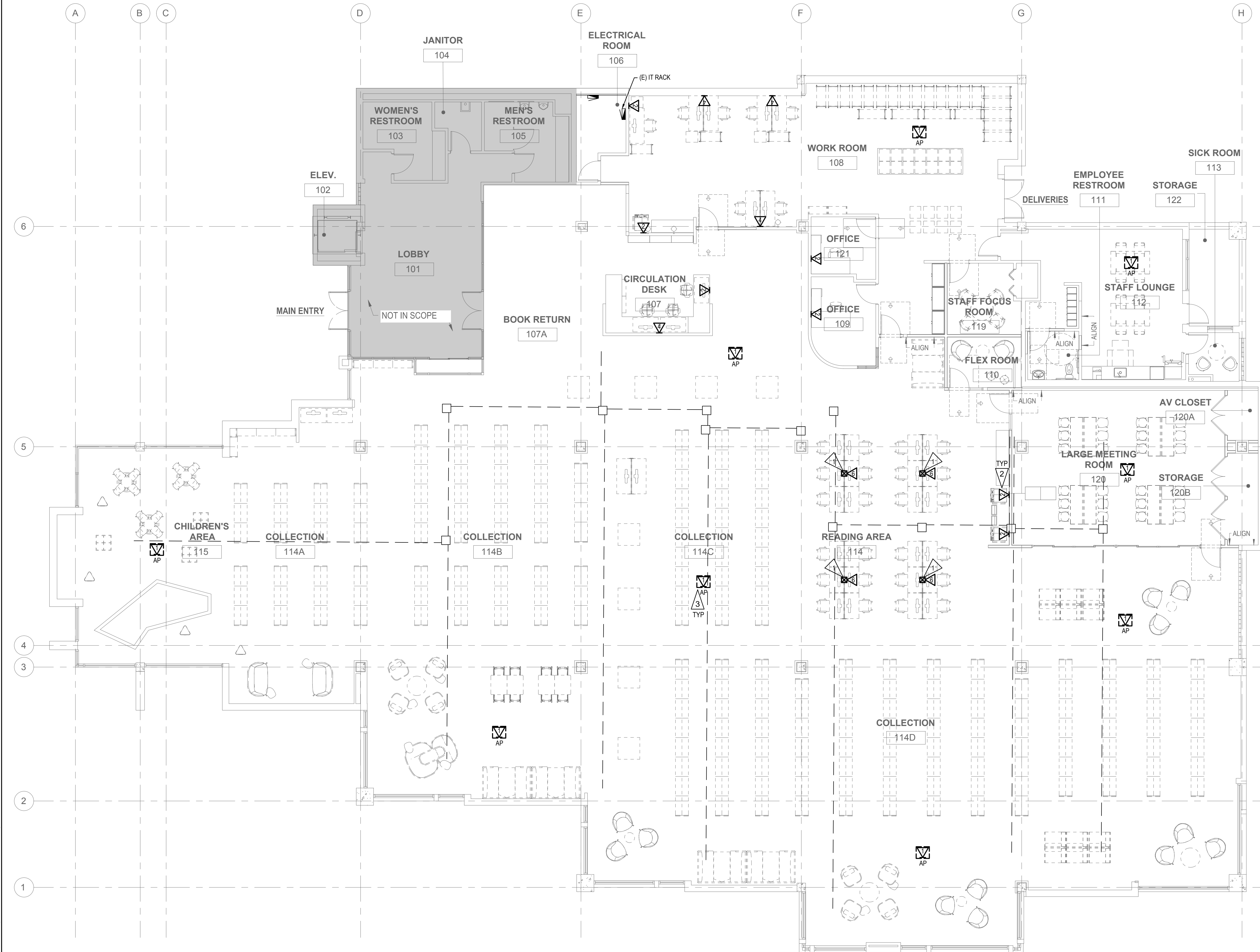
- EXISTING UNDER FLOOR RACEWAY
- - - UNDER FLOOR RACEWAY
- UNDER FLOOR RACEWAY ACCESS

SHEET NOTES

1. ALL CABLING UNDER FLOOR SHALL BE REMOVED BACK TO SOURCE IN ELECTRICAL ROOM 106.
2. CONTRACTOR SHALL COORDINATE WITH OWNER'S REPRESENTATIVE TO DETERMINE AVAILABLE PORTS IN THE EXISTING ELECTRICAL ROOM FOR NEW CABLE TERMINATIONS.

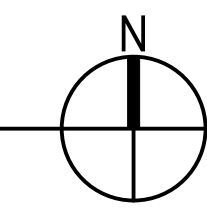
FLAG NOTES

1. PROVIDE SURFACE MOUNTED DEVICE BOXES AS NEEDED TO SUPPORT DATA NEEDS AT WORKSTATIONS. UTILIZE EXISTING UNDERFLOOR RACEWAY WHEREVER POSSIBLE. PROVIDE NEW EXTENSION TO UNDERFLOOR RACEWAY AS NEEDED TO SUPPORT NEW DEVICE LOCATIONS.
2. PROVIDE DATA DEVICES, BACK BOXES, CONDUIT AND CABLING AS REQUIRED TO PROVIDE A COMPLETE SYSTEM. COORDINATE WITH OWNER FOR CABLE REQUIREMENTS.
3. PROVIDE WIRELESS ACCESS POINTS AT SAME ELEVATIONS AS LIGHT IN OPEN SPACES. COORDINATE FINAL LOCATION WITH ARCHITECT PRIOR TO ROUGH-IN.



COMMUNICATIONS PLAN

SCALE: 1/8" = 1'-0"



S:\Projects (Seattle)\911-23005 Edmonds Library Renovation\RM\DWG\CTT3.00.dwg

Printed: 3/30/2023 10:03:30 AM

PLOTTED BY: Tim Ashwood