

CH.11A

Project: Edmonds Library
Issued Date: 07 April 2023

DESCRIPTION: Mobile upholstered lounge chair
QTY. & LOCATION: (2) Large Meeting Room 120
(2) Flex Lounge 114H

MANUFACTURER: Bernhardt Design
PRODUCT: Mitt Lounge Chair, with handle
PRODUCT ID: 5720
DIMENSIONS: 33.5"W x 33.5"D x 32"H
SEAT HEIGHT: 16.5"
BASE: Weight-activated Casters
STITCHING: Standard Stitch
UPHOLSTERY: UPH-11



UPHOLSTERY

GENERAL NOTES:

1. Manufacturer to provide all required hardware and instructions for proper installation.
2. Unless otherwise noted, provide heavy-duty nylon furniture glides, diameter to be sized according to item's leg dimension (as large as possible) without being visible. Glide color to best match leg finish.
3. All images, photographs, and renderings of specified items in this package are for general design intent and reference only.

DESCRIPTION: Mobile upholstered lounge chair
QTY. & LOCATION: (2) Large Meeting Room 120
(2) Flex Lounge 114H

MANUFACTURER: Bernhardt Design
PRODUCT: Mitt Lounge Chair, with handle
PRODUCT ID: 5720
DIMENSIONS: 33.5"W x 33.5"D x 32"H
SEAT HEIGHT: 16.5"
BASE: Weight-activated Casters
STITCHING: Standard stitch
UPHOLSTERY: UPH-22



UPHOLSTERY

GENERAL NOTES:

1. Manufacturer to provide all required hardware and instructions for proper installation.
2. Unless otherwise noted, provide heavy-duty nylon furniture glides, diameter to be sized according to item's leg dimension (as large as possible) without being visible. Glide color to best match leg finish.
3. All images, photographs, and renderings of specified items in this package are for general design intent and reference only.

DESCRIPTION: Mobile upholstered lounge chair
QTY. & LOCATION: (3) Teen/Juvenile 114C

MANUFACTURER: Bernhardt Design
PRODUCT: Mitt Lounge Chair, with handle
PRODUCT ID: 5720
DIMENSIONS: 33.5"W x 33.5"D x 32"H
SEAT HEIGHT: 16.5"
BASE: Weight-activated Casters
STITCHING: Standard Stitch
UPHOLSTERY: UPH-17



UPHOLSTERY

GENERAL NOTES:

1. Manufacturer to provide all required hardware and instructions for proper installation.
2. Unless otherwise noted, provide heavy-duty nylon furniture glides, diameter to be sized according to item's leg dimension (as large as possible) without being visible. Glide color to best match leg finish.
3. All images, photographs, and renderings of specified items in this package are for general design intent and reference only.

DESCRIPTION: Low upholstered lounge chair
QTY. & LOCATION: (3) Children's Area 115

MANUFACTURER: Bernhardt Design
PRODUCT: Zip Corner Chair
PRODUCT ID: 5871B - Corner Seat
DIMENSIONS: 34"W x 34"D x 32.5"H
SEAT HEIGHT: 11"
HANDLE: L - Black Belting
UPHOLSTERY: UPH-18



UPHOLSTERY

GENERAL NOTES:

1. Manufacturer to provide all required hardware and instructions for proper installation.
2. Unless otherwise noted, provide heavy-duty nylon furniture glides, diameter to be sized according to item's leg dimension (as large as possible) without being visible. Glide color to best match leg finish.
3. All images, photographs, and renderings of specified items in this package are for general design intent and reference only.

DESCRIPTION: Low upholstered lounge chair
QTY. & LOCATION: (1) Children's Area 115

MANUFACTURER: Bernhardt Design
PRODUCT: Zip Chair
PRODUCT ID: 5870B - Single Seat
DIMENSIONS: 30.5"W x 34"D x 32.5"H
SEAT HEIGHT: 11"
HANDLE: L - Black Belting
UPHOLSTERY: UPH-18



UPHOLSTERY

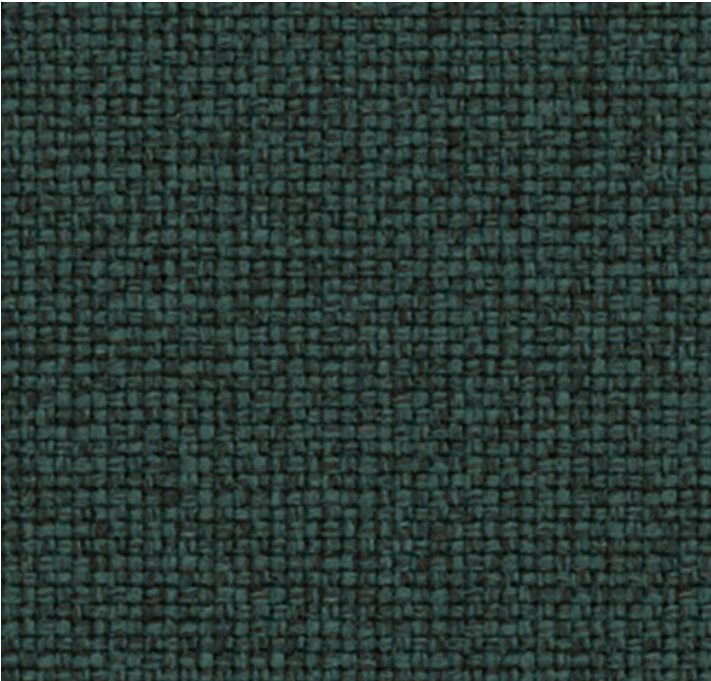
GENERAL NOTES:

1. Manufacturer to provide all required hardware and instructions for proper installation.
2. Unless otherwise noted, provide heavy-duty nylon furniture glides, diameter to be sized according to item's leg dimension (as large as possible) without being visible. Glide color to best match leg finish.
3. All images, photographs, and renderings of specified items in this package are for general design intent and reference only.

UPH-11

Project: Edmonds Library
Issued Date: 07 April 2023

APPLIED TO:	CH.11A
MANUFACTURER:	DesignTex
PATTERN NAME:	Wend
COLOR:	Canal
PRODUCT ID:	3169-402
WIDTH:	54"
CONTENT:	100% Post-consumer Recycled Polyester
FINISH:	Silicone
BACKING:	Fluid Barrier (Supreen™)
ABRASION:	≥100,000 double rubs
FLAMMABILITY:	NFPA 260 - Class 1
CLEANING CODE:	W/S, Bleach (10:1)



GENERAL NOTES:

- 1. Provide CFA prior to completing the order and shipping to manufacturer.
- 2. Furniture manufacturer to determine quantity required.

APPLIED TO: CH.11C

MANUFACTURER: DesignTex
PATTERN NAME: Beguiled By The Wild
COLOR: Tortoise
PRODUCT ID: 3043-502
WIDTH: 54"
CONTENT: 100% Polyurethane
FINISH: Silicone
BACKING: Knit, Polyester
ABRASION: $\geq 1,000,000$ double rubs
FLAMMABILITY: CA TB 117-2013
CLEANING CODE: W/S, Bleach Cleanable (4:1),
Denim Dye Resistant, Ink
Resistant



GENERAL NOTES:

1. Provide CFA prior to completing the order and shipping to manufacturer.
2. Furniture manufacturer to determine quantity required.

APPLIED TO:	CH.15 CH.16
MANUFACTURER:	DesignTex
PATTERN NAME:	Beguiled By The Wild
COLOR:	Orchid Mantis
PRODUCT ID:	3043-304
WIDTH:	54"
CONTENT:	100% Polyurethane
FINISH:	Silicone
BACKING:	Knit, Polyester
ABRASION:	≥1,000,000 double rubs
FLAMMABILITY:	CA TB 117-2013
CLEANING CODE:	W/S, Bleach Cleanable (4:1), Denim Dye Resistant, Ink Resistant



GENERAL NOTES:

1. Provide CFA prior to completing the order and shipping to manufacturer.
2. Furniture manufacturer to determine quantity required.

UPH-22

Project: Edmonds Library
Issued Date: 07 April 2023

APPLIED TO: CH.11B

MANUFACTURER: Architex
PATTERN NAME: Cupertino
COLOR: Valico
PRODUCT ID:
WIDTH: 54"
CONTENT: 100% Silicone
FINISH: None
BACKING: Polyester
ABRASION: 200,000 double rubs
FLAMMABILITY: CA TB 117-2013
CLEANING CODE: W/S, Alcohol, Bleach Cleanable
(4:1), Ink & Stain Resistant



- GENERAL NOTES:**
- 1. Provide CFA prior to completing the order and shipping to manufacturer.
 - 2. Furniture manufacturer to determine quantity required.

DESCRIPTION:	Dual-height work table
QTY. & LOCATION:	(1) Reading Area 114G
MANUFACTURER:	Bernhardt
PRODUCT:	Blueprint 42"h Block Stepped Table (Starter table + end run table)
PRODUCT ID:	BPS-NGA-CCSQ BPS-JGA-TCSQ
DIMENSIONS:	72"W x 36"D x 42"H 72"W x 36"D x 30"H
TOP HEIGHT:	42" and 30"
BASE:	Block
BASE MATERIAL:	OAK - Oak
BASE FINISH:	M71 Blonde
TOP MATERIAL:	OAK - Oak
TOP FINISH:	M71 Blonde
POWER OPTIONS:	1. Z01 Surface-mount power module at each table 2. Include wire management snake



WOOD FINISH

GENERAL NOTES:

1. Manufacturer to provide all required hardware and instructions for proper installation.
2. Unless otherwise noted, provide heavy-duty nylon furniture glides, diameter to be sized according to item's leg dimension (as large as possible) without being visible. Glide color to best match leg finish.
3. All images, photographs, and renderings of specified items in this package are for general design intent and reference only.

Rep Contact Information

Andreu World

Victoria Steidler | 612.384.7424
victoria@howardroarkassociates.com

Bernhardt Designs

Jenn Hubbell | 206.765.9096
jenn@concentricspaces.com

Coalesse

Kristen Naranjo | 206.992.9291
kristen.naranjo@steelcase.com

Herman Miller

Matt Grynol | 512.518.1515
matt_grynol@hermanmiller.com

Hightower

Todd Johnson | 206.650.0538
todd@mattercontract.com

Keilhauer

Esther Du Graf | 206.281.9366
esther@dugraf.com

KI

Dawn Viar | 503.724.2641
dawn@orange-thread.com

Kimball Office

Theresa Comer | 425.761.2065
theresa.comer@kimball.com

Kingsley

800-376-7209 | sales@kingsley.com

Leland

Jordan Gates | 206.617.7049
jordan@absolute-resource.com

NaughtOne

Jordan Gates | 206.617.7049
jordan@absolute-resource.com

shopPOP Displays

1-888-278-5850 | shopPOPdisplays.com

TMC

Christina Kirwin | 734.622.0084
christina@tmc furniture.com

Watson

Andrew Wesner | 206.729.7800
andrew@kayserwesner.com